

Corporate Presentation

2024



FCC Group

FCC Group	3
Key figures	4
Diversified business model	5
Leadership position in all areas	8
International presence	9
Integrated offering	10
Value creation	11
Corporate Governance Structure	13
Management team	14



Over
125 years
of experience



Leader in environment
water and infrastructure



Over
71,000
employees



Operations in over **25 countries**,
51% of revenue from international markets



High income
stability



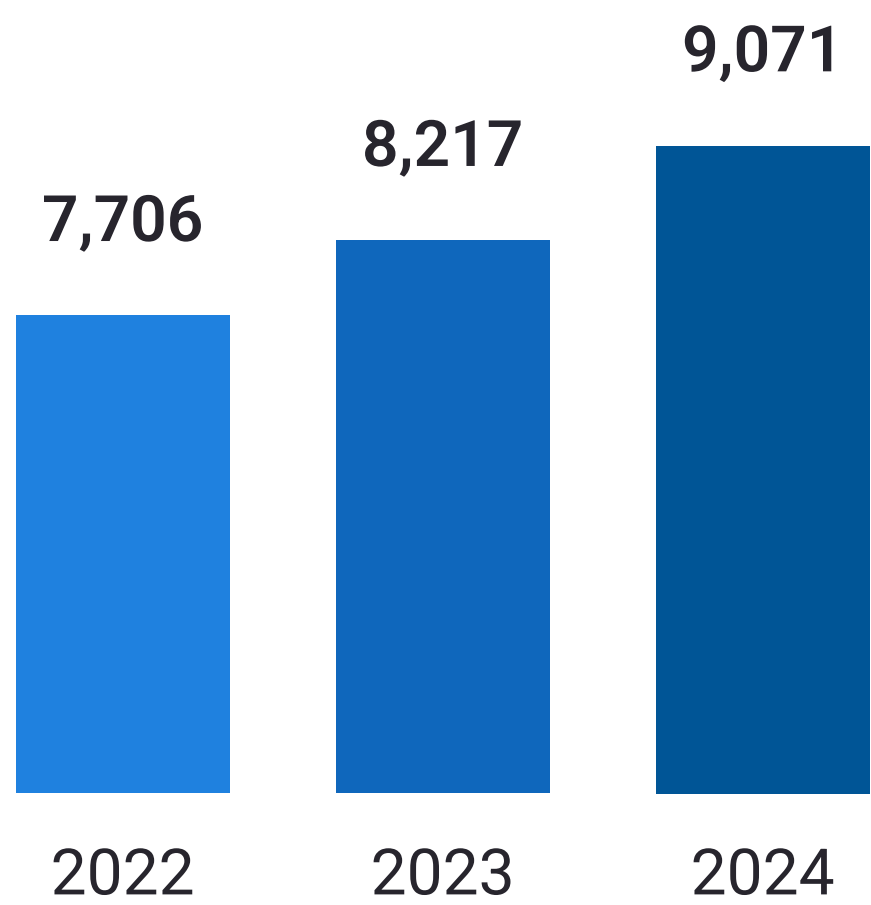
Integrated
service offering



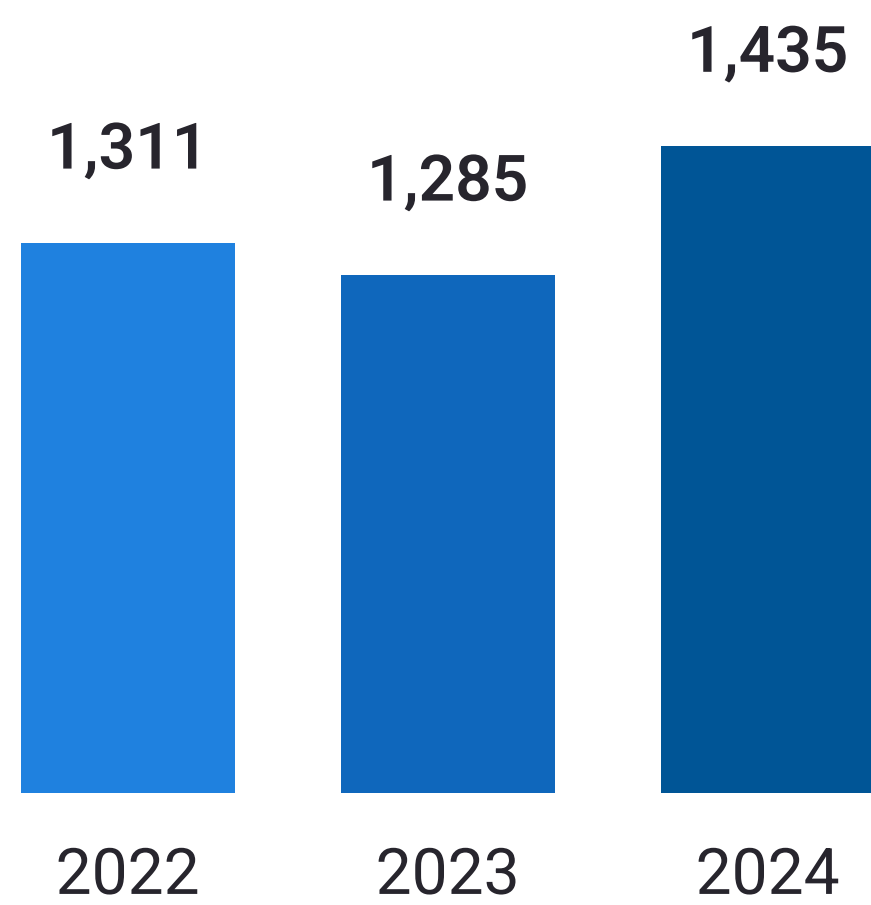
€9,071 M in revenue
€1,435 M EBITDA in 2024

Key figures 2024

Turnover
In € M



EBITDA
In € M

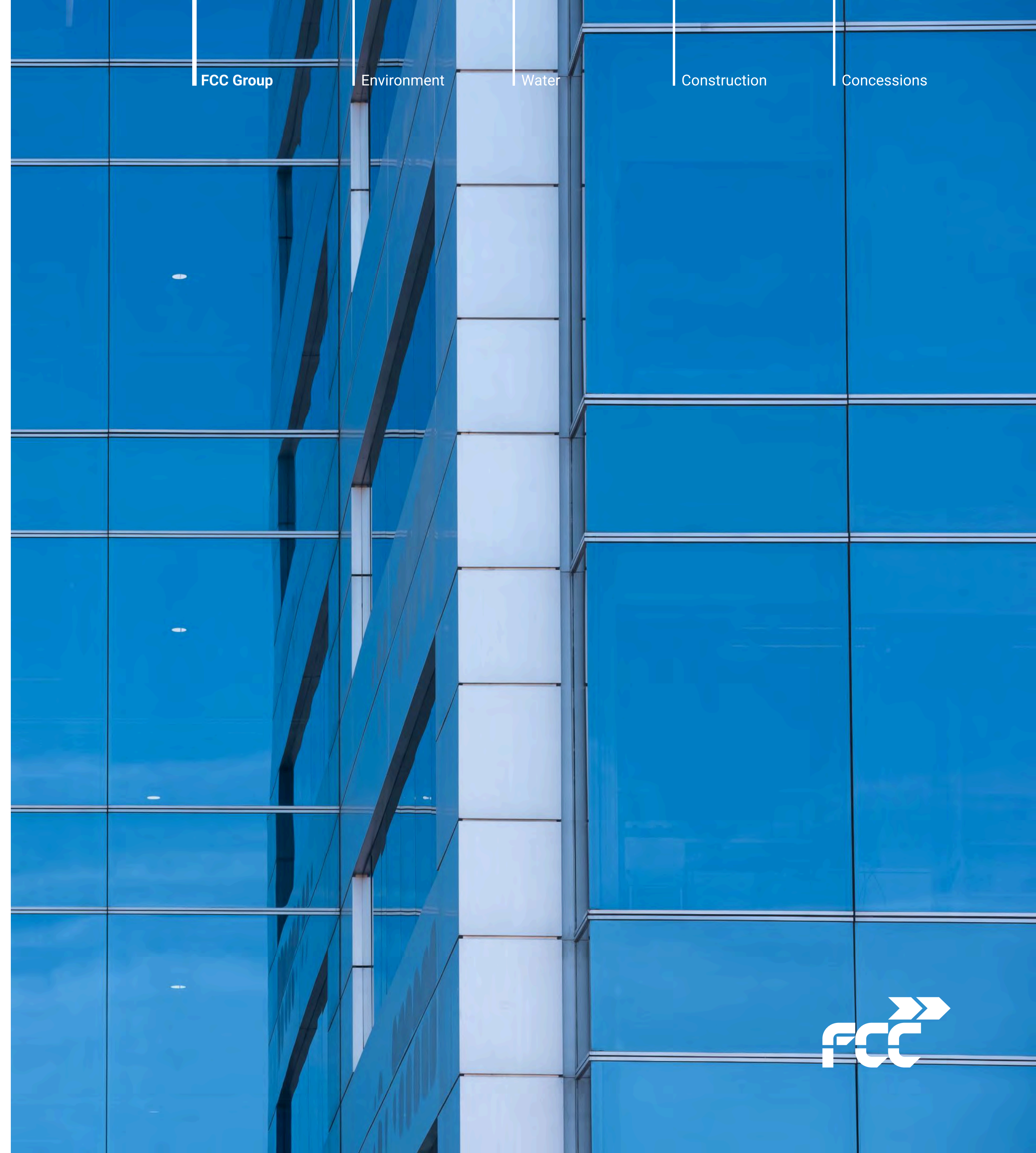


Portfolio

€43,044 M
as of 31 December 2024

People

+71,000



FCC Group

Environment

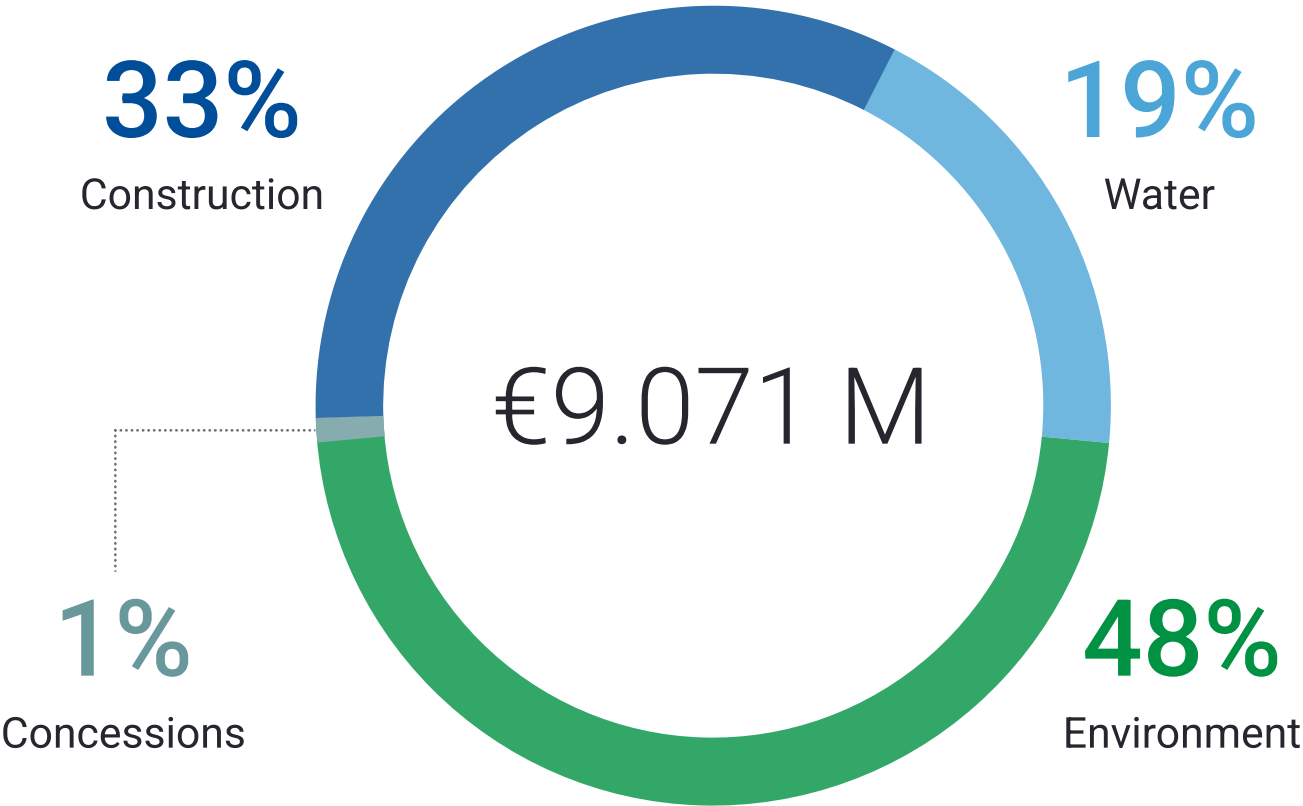
Water

Construction

Concessions

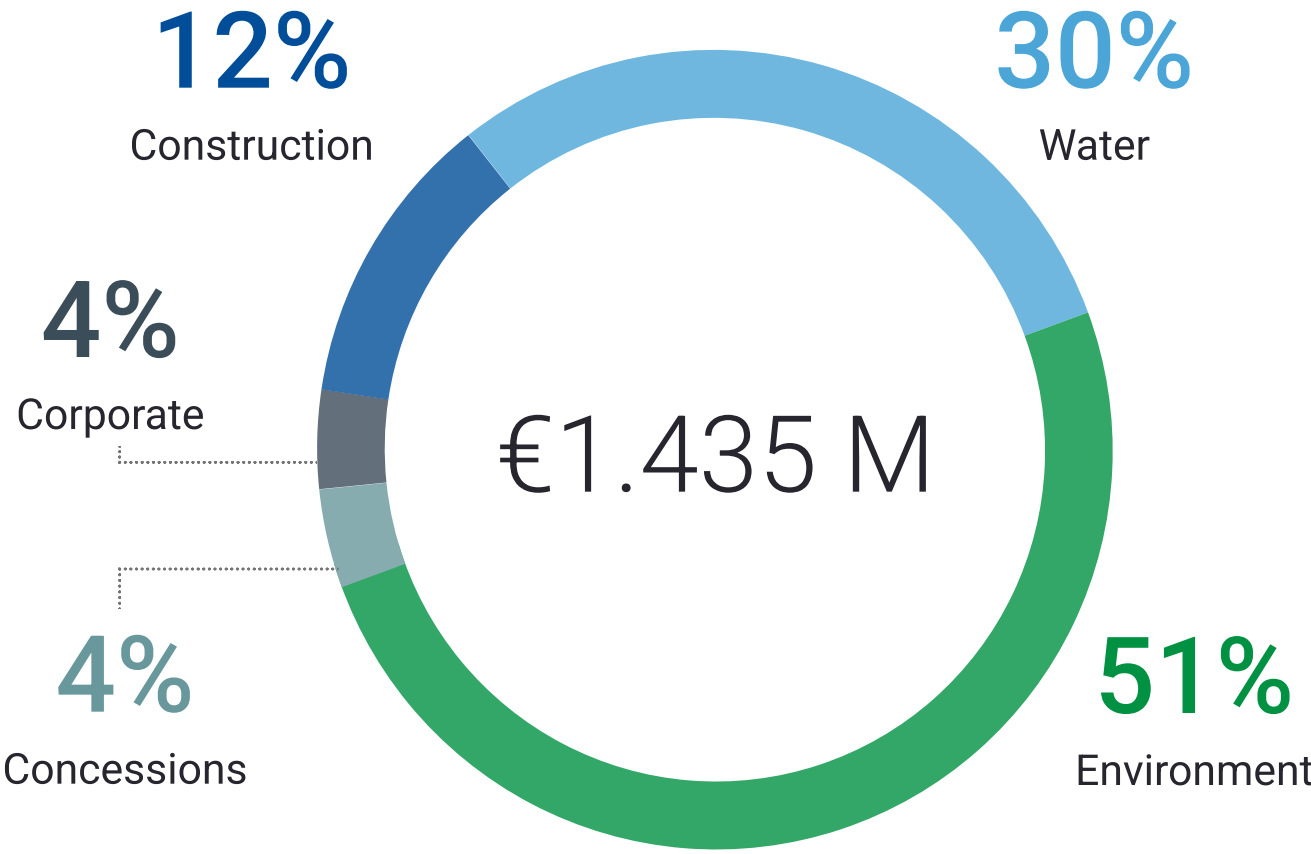


Diversified business model



Revenue per Business Area 2024

Environment	€4.346 M
Water	€1.675 M
Construction	€2.991 M
Concessions	€78 M
Corporate	(€19 M)



EBITDA per Business Area 2024

Environment	€732 M
Water	€425 M
Construction	€170 M
Concessions	€55 M
Corporate	€53 M

Diversified business model

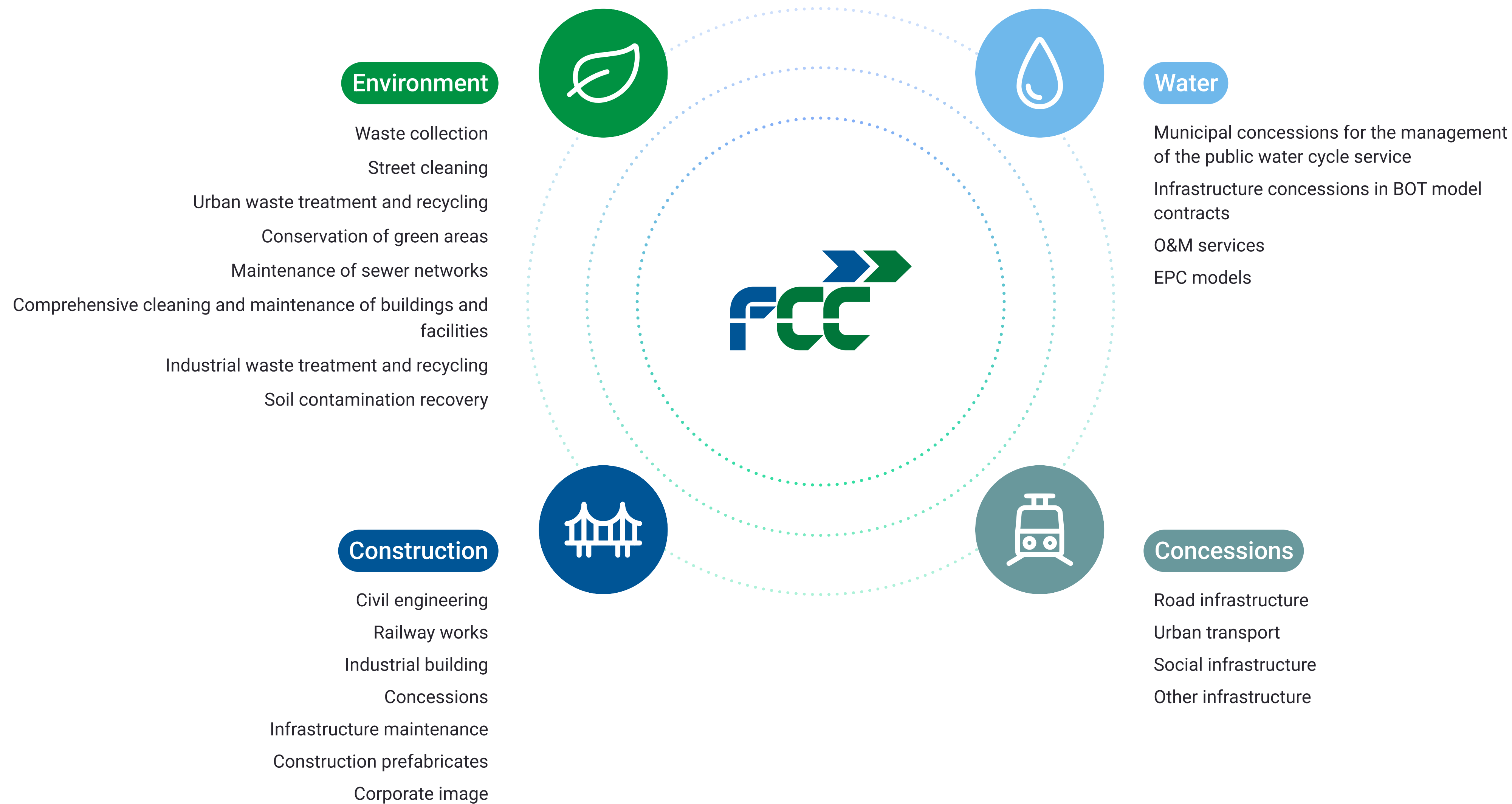
FCC Group

Environment

Water

Construction

Concessions



Diversified business model

FCC Group

Environment

Water

Construction

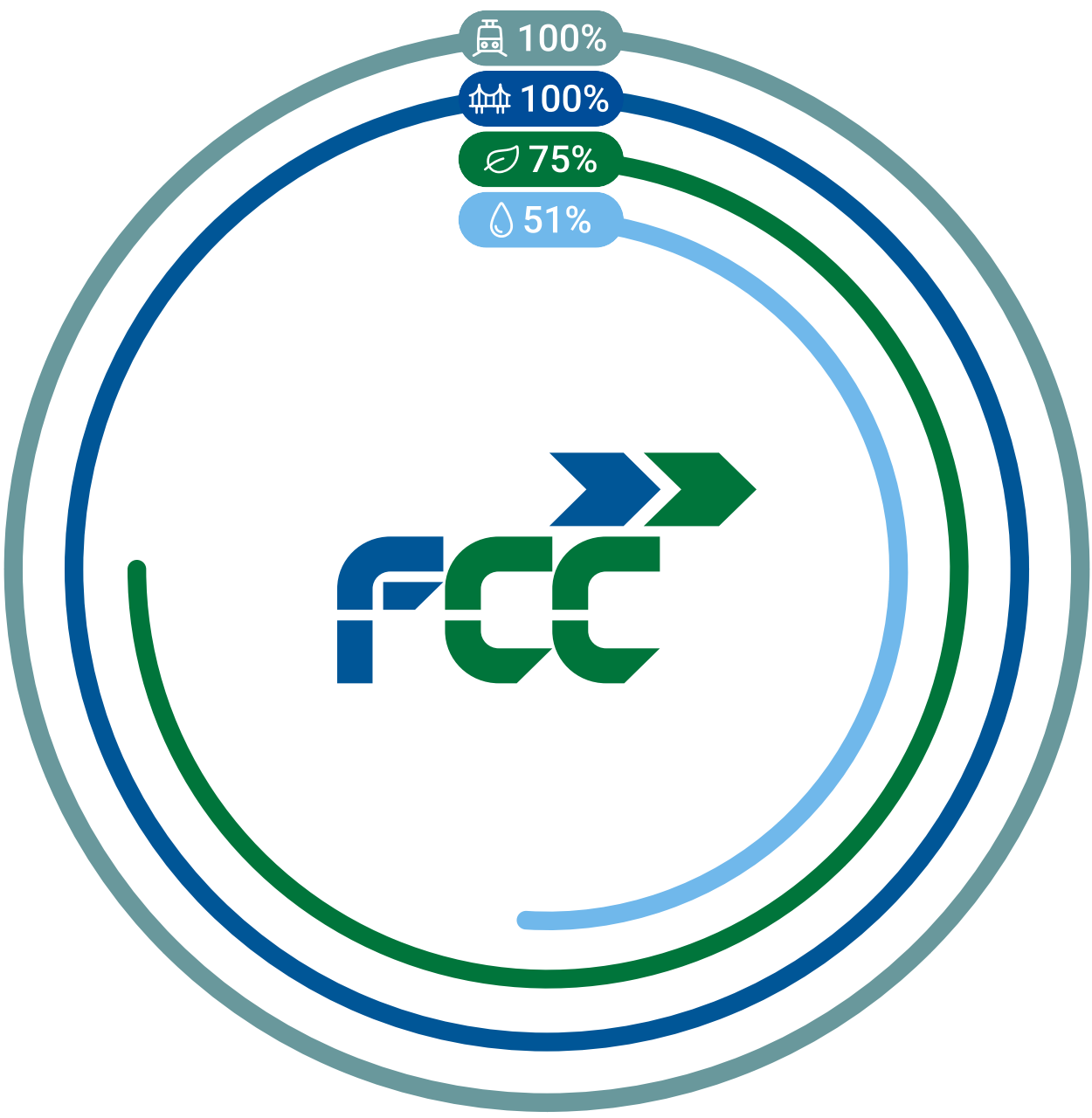
Concessions

FCC Environmental Services Holding

FCC Medio Ambiente (Spain)	100%
FCC Ámbito	100%
FCC Environment France	100%
FCC Meio Ambiente Portugal	100%
FCC Environment UK	100%
FCC Environment CEE	100%
FCC Environmental Services USA	100%

Concessions

FCC Concessions	100%
-----------------	------



Aqualia

Aqualia Intech	100 %
Aqualia Colombia	100 %
Aqualia Czech (Rep. Checa)	100 %
Aqualia France	100 %
Aqualia Georgia	100 %
Aqualia Mexico	100 %
Aqualia Portugal	100 %
Aqualia USA	100 %

Construction

FCC Construcción	100 %
FCC Industrial	100 %
Matinsa	100 %
Prefabricados Delta	100 %
Megaplás	100 %



International presence



FCC Group

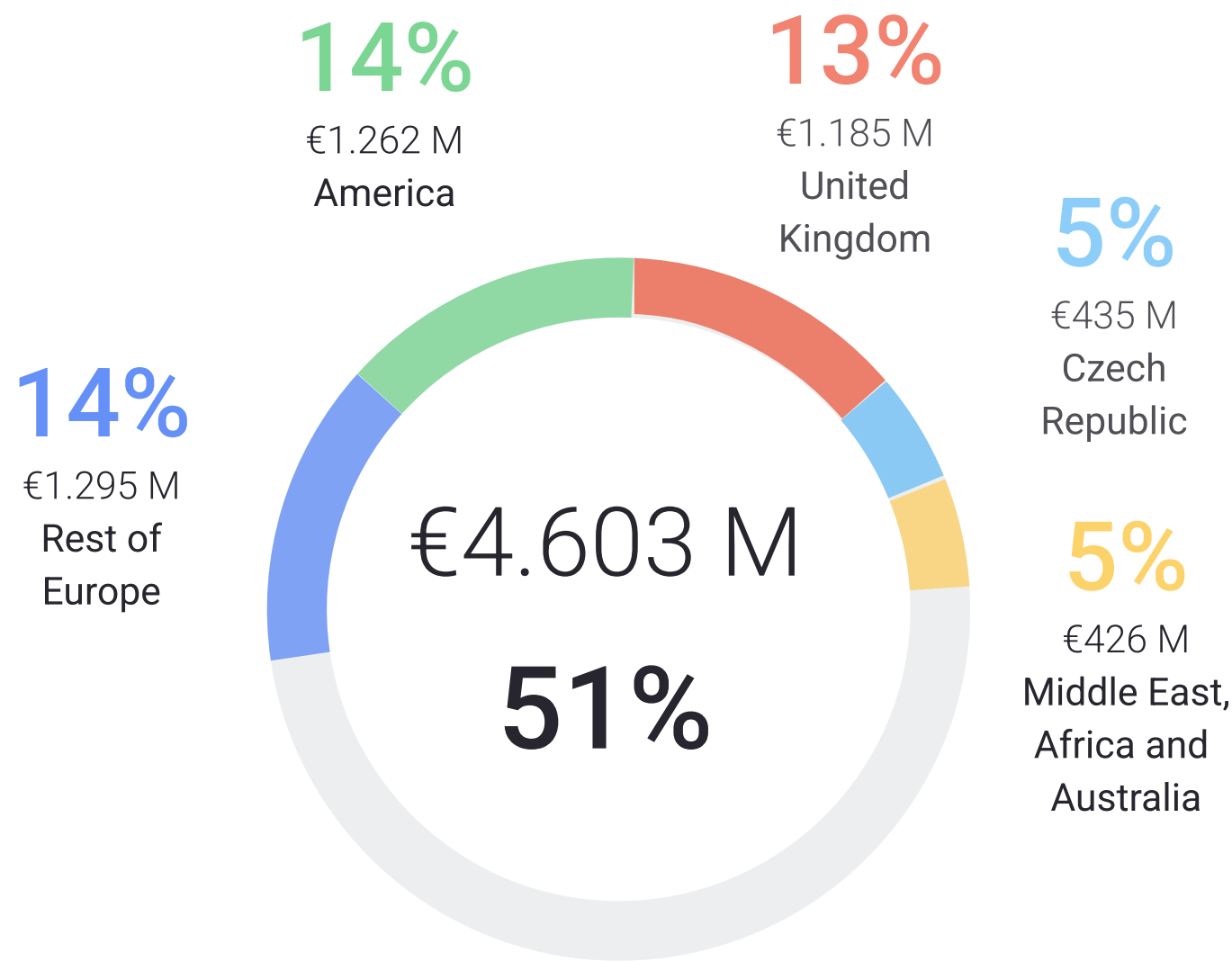
Environment

Water

Construction

Concessions

International revenues 2024



International portfolio

€25.635 M

60% of the total, as of 31 December 2024

Integrated offering

FCC Group

Environment

Water

Construction

Concessions

Advanced technology

Proprietary technology for waste collection and street cleaning

Leadership in recycling systems and energy recovery from waste

Experts in providing solutions across all phases of the comprehensive water cycle for all uses: residential, agricultural, and industrial, and for all needs of public and private entities and organizations

Specialists in technically complex bridges and ports

Innovative processes for high-speed lines, metro, and tunnels

Specialists in turnkey projects in the industrial sector



Our leadership position strengthens our ability to capitalize on the demand for our activities.

Environment	<div><div></div><div>Positive long-term outlook due to regulatory developments and environmental considerations. The EU Waste Framework Directive requires member states to recycle at least 55% of their municipal solid waste by 2025 and 65% by 2035, while reducing landfill to 10% by 2035.</div><div>New opportunities arising from the planned reforms in Spain regarding recycling and composting in 2023.</div><div>Organic potential for international expansion, particularly in America, the UK, and some Central European countries.</div></div>
Water	<div><div></div><div>Positive long-term outlook due to regulatory developments, environmental considerations, and the gap in water infrastructure.</div><div>Growth and international expansion to meet global needs for clean water and sanitation for all, supported by the right human resources and technology.</div><div>Growth potential in Europe and selectively in MENA and America.</div></div>
Construction	<div><div></div><div>The ongoing infrastructure gap in selected markets provides additional advantages.</div><div>Growth potential in Spain linked to clean energy, efficiency, and related facilities.</div></div>
Concessions	<div><div></div><div>Selective expansion supported by the demand for public-private collaboration in new transport infrastructure and facilities projects.</div><div>Predominant geographical positioning in the established jurisdictions where the Group operates.</div></div>



Value Creation

FCC Group

Environment

Water

Construction

Concessions

Experience
Over 125 years of creating
value for citizens



Internationalization
Present in more than 25
countries

Innovation and technological capability
Over €13.5 M in R&D and advancements to optimize
efficiency, tackle digital challenges, and promote
sustainable practical solutions



Professionalism
More than 71,000 professionals
specialized in various fields

Environmental Care
Over €100.5 M allocated to environmental risk
prevention. Certified environmental
management systems according to UNE-EN
ISO 14001 in all business areas



Quality
Certified quality management
systems according to **UNE-EN ISO
9001** in all business areas

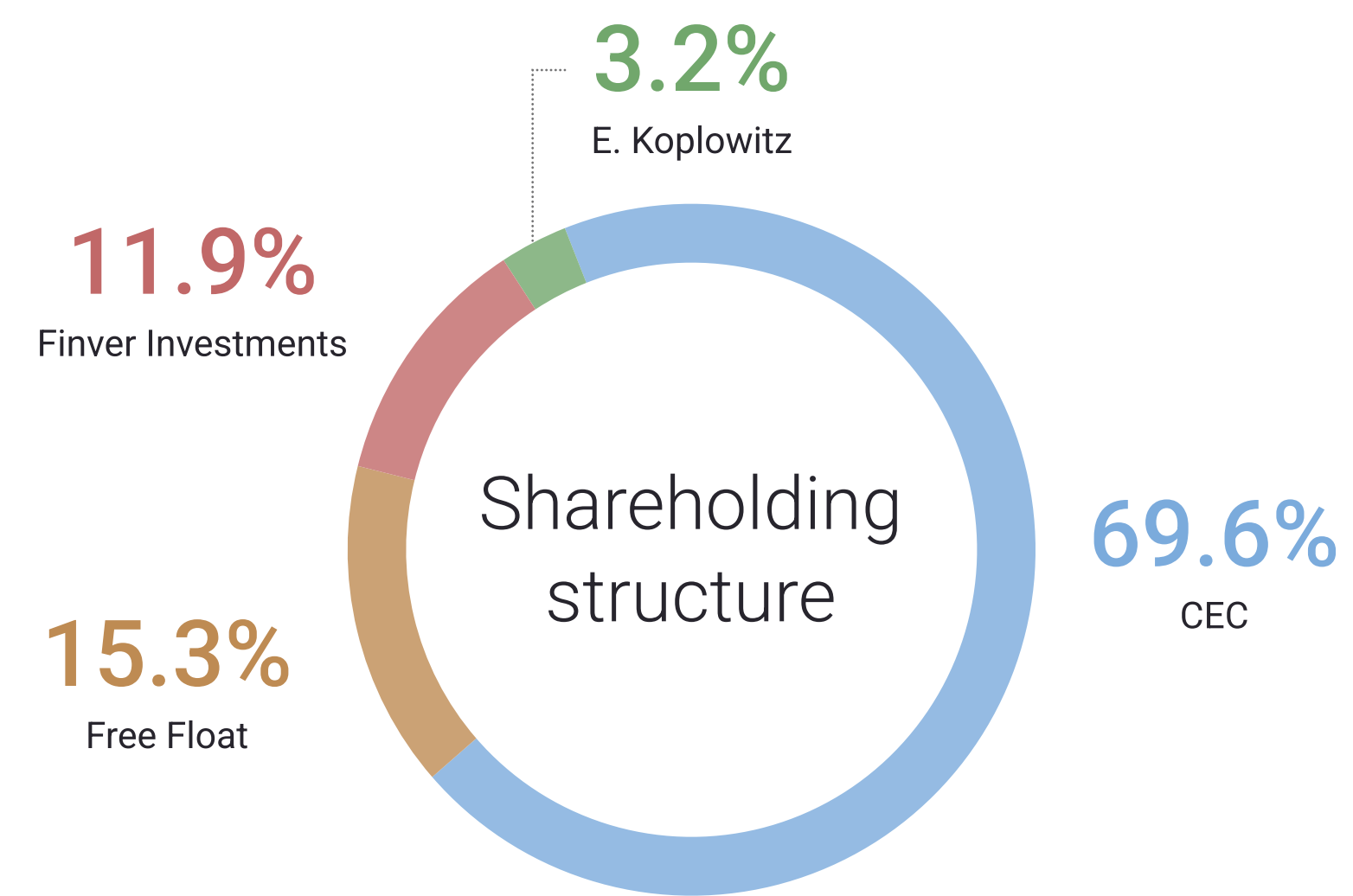
Local Development
Over €5.2 M allocated to sponsorships
and contributions to non-profit entities,
foundations, and sector associations



Safety and Health
Certified occupational risk management
systems according to **ISO 45001** in all
business areas



Corporate Governance Structure



Composition of the Council

11 members

- 8 Dominical Directors
- 2 Independent Members
- 1 Executive Director

Audit and Remuneration Board Commissions

- Chaired by independent members
- Majority of independent members



Management Team

FCC Group

Environment

Water

Construction

Concessions

Esther Alcocer Koplowitz
Chairwoman of FCC

Pablo Colio Abril
CEO

Business Areas

Íñigo Sanz Pérez
Environment

Santiago Lafuente Pérez-Lucas
Water





Pablo Colio Abril
Construction

Ramón Gómez Andrío
Concessions





Business Areas

<div> Environment</div>		<div> Water</div>		<div> Construction</div>		<div> Concessions</div>	
Activities	16	Activities	43	Activities	79	Activities	121
Figures	17	Figures	44	Figures	80	Figures	122
Key figures	18	Key figures	45	Key figures	81	Key figures	123
International Presence	19	International Presence	46	International Presence	82	International Presence	124
Main References	20	Main References	47	Main References	83	International PPP Infrastructures	125
						Main References	126



Environment

- Urban waste collection
- Street cleaning
- Treatment and recycling of urban waste
- Conservation of green areas
- Maintenance of sewage systems
- Industrial waste and soil recovery

Figures



FCC Group

Environment

Water

Construction

Concessions



Providing services to citizens since 1911



Among the 7 best in the world



Service for over 78 million citizens



More than 860 treatment, recycling, and waste disposal facilities



ISO 50001 certified in Comprehensive Energy Management



Management of 26.9 million tonnes of waste per year



Present in 5,650 municipalities



4,217 sustainable vehicles (CNG, electric, and Bi Power)



Nearly 54,000 people

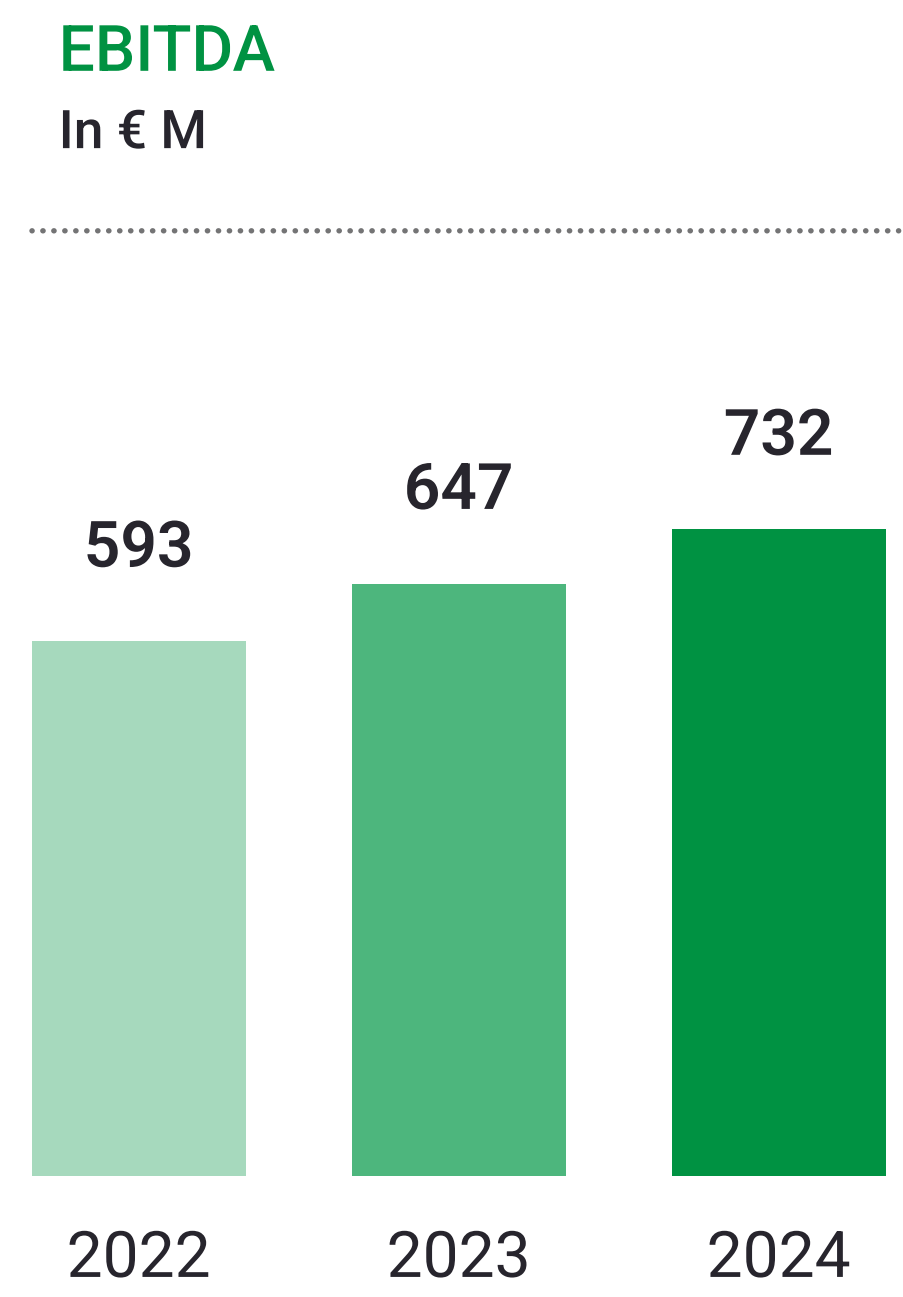
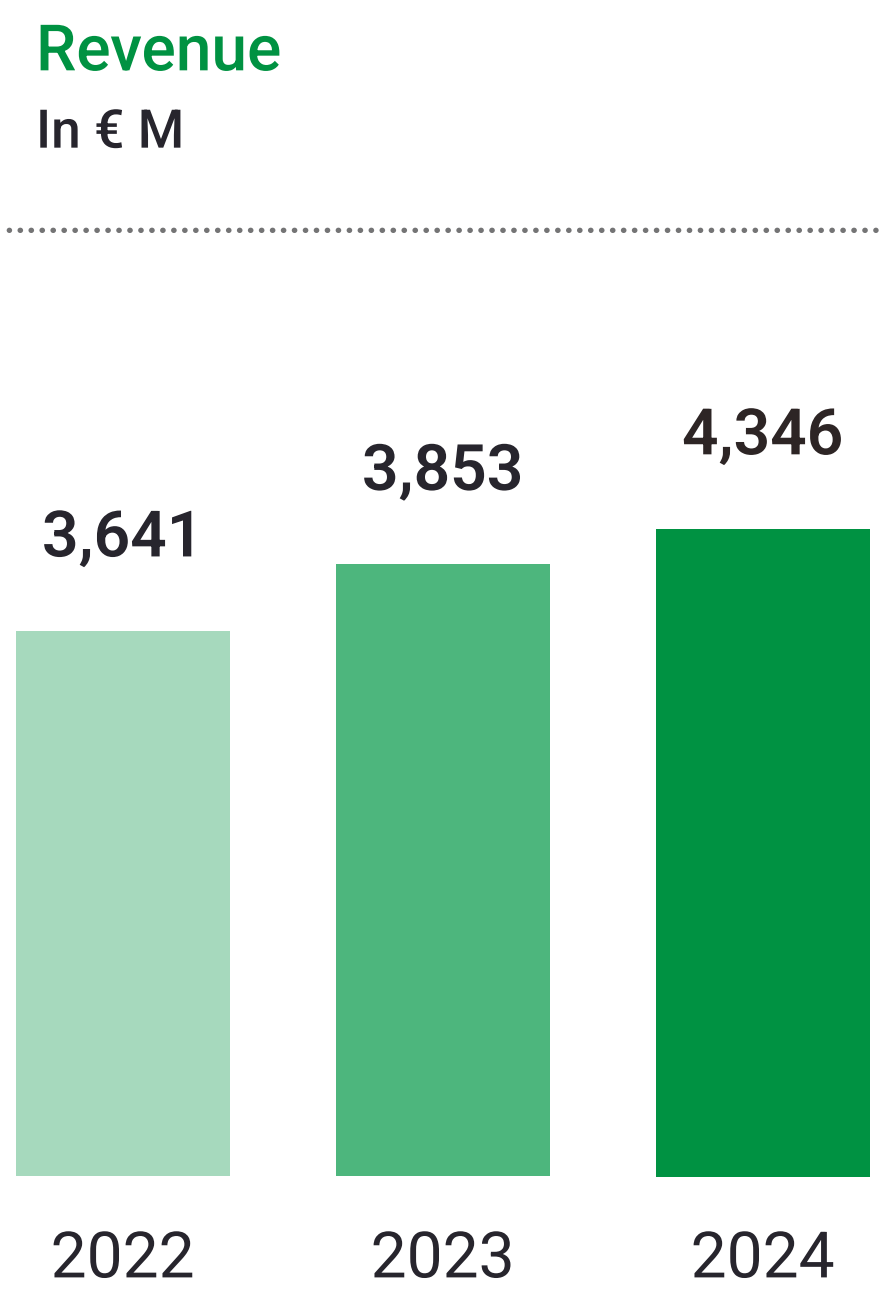


Labour integration for disadvantaged groups



The world's most technologically advanced fleet of vehicles with over 23,000 units

Key figures 2024



Portfolio
€14,110 M
as of 31 December 2024

People
54,000



International presence

FCC Group

Environment

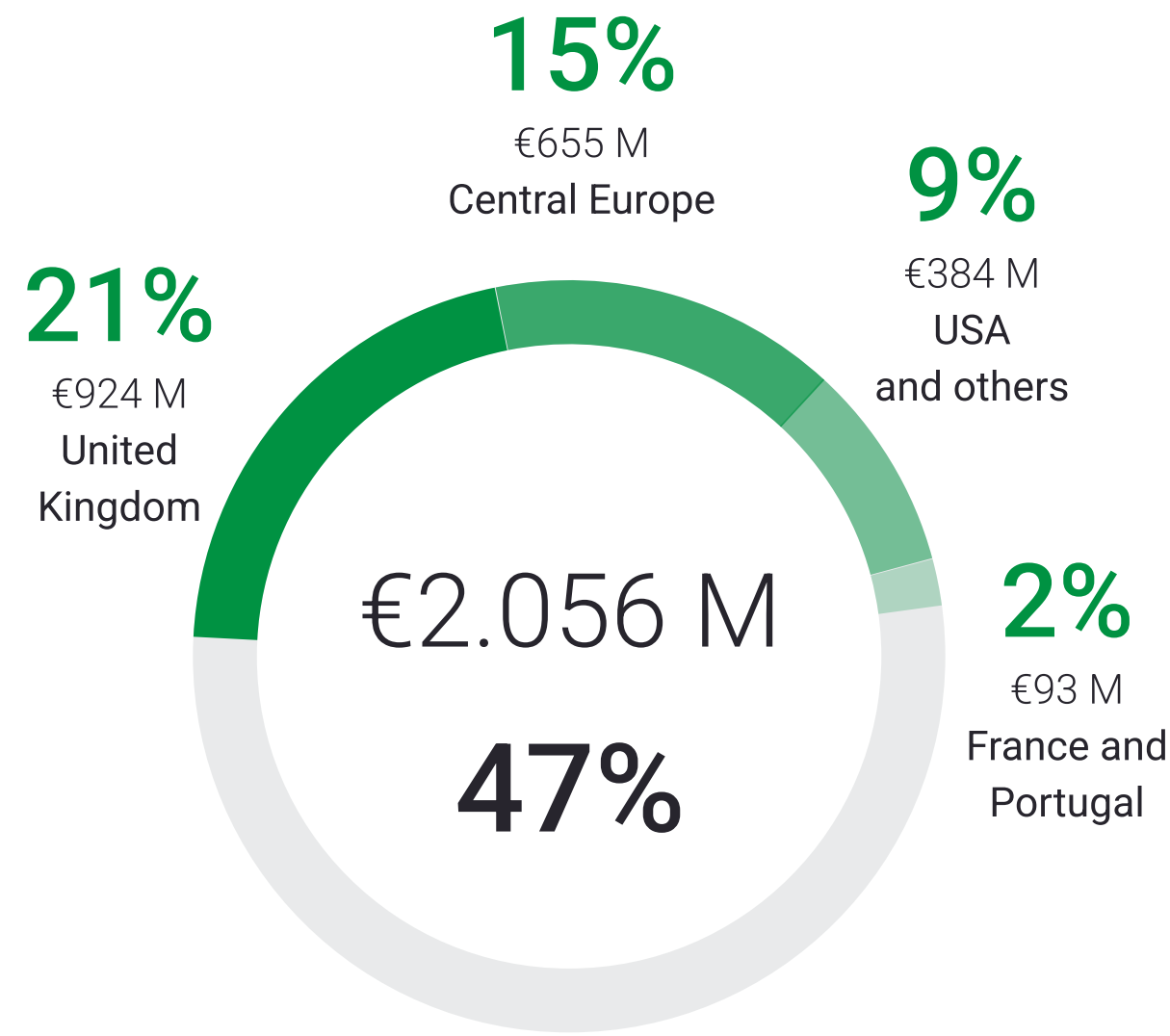
Water

Construction

Concessions



International revenues 2024



International portfolio

€5.609 M

40% of the total,
as of 31 December 2024



Waste collection and street cleansing, Valencia, Spain

Since 1957.

Population: 365,000 inhabitants.

Portfolio: €525.89 million.

200 ECO and Zero Emissions vehicles and machines. 550 people / 140,000 tonnes per year and 2.3 million m2 of surface area.



Waste collection and street cleansing, Valencia, Spain

Since 1957.

Population: 365,000 inhabitants.

Portfolio: €525.89 million.

200 ECO and Zero Emissions vehicles and machines. 550 people / 140,000 tonnes per year and 2.3 million m2 of surface area.



Waste collection and street cleansing and drainage, L'Hospitalet de Llobregat, Barcelona, Spain

Since 1960.

Population: 260,000 inhabitants.

Portfolio: €400 million. 10 years.

136 ECO and Zero Emissions vehicles and machines. 500 people / 88,500 tonnes per year / 230 km of road surface / 232.94 km of network.



Main references

Waste collection and street cleaning (lot 1), Bilbao, Spain

Since 1972.

Population: 346,000 inhabitants.

Investment: €268 million. 5 years.

300 vehicles and machines, 33% ECO. 900 people / 143,000 tonnes per year / 1,000 km of streets.



FCC Group

Environment

Water

Construction

Concessions



Facility Management of GESPESA, Badajoz, Spain

Operation, maintenance and conservation of facilities in management area 4.
Since 2005.

Population: 243,000 inhabitants.

Investment: €56.6 million.

Portfolio: €94.45 million. 15 years.

36 municipalities. 65 people / 110,000 tonnes per year.



Main references

FCC Group

Environment

Water

Construction

Concessions

Las Calandrias Environmental Complex, Jerez de la Frontera, Spain

Modernisation and operation contract. 18 months of construction work.

Population: 450,000 inhabitants.

Investment: €40.8 million

Portfolio: €317 million. 20 years.

260,000 tonnes per year.



Environmental Complex of the Eastern Community, Loeches, Spain

Recycling Environmental Complex.

Population: 730,000 inhabitants.

Portfolio: €130 million.

31 municipalities, 5 recycling lines / 254,000 tonnes per year /
-90,000 tonnes eq CO2 per year.



Main references

FCC Group

Environment

Water

Construction

Concessions

FCC Environnement, France

Europe Waste Services: Waste collection. New contracts for Paris Saclay (€5.5m) and Rambouillet (€4.36m).

Europe Road Services: Street cleaning. Renewal of Grand Paris Sud and new contract for Vitry-sur-Seine.

Europe Cleaning Services: Building cleaning. Renewal of contracts with Decathlon, Ministry of Defence, and the communities of Coeur d'Essonne and Paris Seine (new).



Transport and treatment of municipal waste in Western Tyrol, Austria

Rail transport and energy recovery of municipal waste at the Zitersdorf plant for the Western Tyrol Waste Disposal Association.

Portfolio: €33 million. 5 years.



Various municipal services, Prostějov, Czech Republic

Management of municipal waste, road maintenance, public green areas, botanical gardens, playgrounds, sports fields, street furniture, cemeteries and public lighting services.

Portfolio: €36.67 million. 4 years.



Integrated waste management, Galati, Romania

Collection, treatment and recycling of waste.

Portfolio: €16.78 million. 5 years.



Braila integrated waste management system, Romania

Management of the INSURATEI transfer station.

Population: 46,000 inhabitants.

Portfolio: €8.54 million. 7 years.

Management and operation of the IANCA integrated waste center. 5,000 tons per year.



Energy recovery plant in Zitersdorf, Austria

150,000 tonnes per year with 14.5 MW net electrical power, with an annual energy export to the grid of 106,000 MWh, enough to supply more than 30,000 homes.



Management of recycling centre and transfer station, Yorkshire, United Kingdom

Extension of the management contract for 13 recycling centres and 3 transfer stations for the councils of Hull and the East Riding of Yorkshire.

Portfolio: £45 million. 6 years



Waste disposal, Cheshire West and Chester, United Kingdom

Extension of the waste disposal contract.

Population: 357,699 inhabitants.

Portfolio: £34.49 million. 3 years.



Lostock sustainable energy recovery plant, United Kingdom

Development of a waste energy recovery plant with a capacity of 600,000 tpa in partnership with Copenhagen Infrastructure Partners (CIP).

Investment: £408 million.

Start of operations: November 2026.



Edinburgh and Midlothian Zero Waste plant, United Kingdom

Recycling and energy recovery plant in Millerhill (Midlothian).
Operational period of 25 years. Management and treatment of 160,000 tonnes per year. Production capacity of 14.2 MW / Energy for 32,000 homes.



Waste collection from Clay County, Florida, USA

Population: 230,000 inhabitants.

Investment: \$15 million.

Portfolio: \$420 million. 10+5+5 years.
47 vehicles. 70 people.



Waste collection in Saint Paul, Minnesota, USA

Population: 300,000 residents.
Investment: \$25 million.
Portfolio: \$115 million. 7 years.
30 new CNG vehicles + electric inspection vehicles, gas station construction / 60 people.



Main references



FCC Group

Environment

Water

Construction

Concessions

Acquisition and integration of Premier Waste Services LLC, Dallas, USA

Commercial solid waste collection company in the Dallas-Fort Worth metropolitan area for over 20 years. 4,000 contracts, 59 vehicles.

Acquisition and integration of Houston Waste Solutions, Houston, USA

Commercial solid waste collection company in the Houston metropolitan area. Owns and operates a construction and demolition waste transfer station in the city. 3,000 customers, 40 vehicles.

Main references

FCC Group

Environment

Water

Construction

Concessions

Environmental Recycling Complex in Placer County, California, USA

Construction and operation of a 130-hectare Environmental Complex.

Investment: \$141 million.

Portfolio: \$1.5 billion. 10 + 5 + 5 years.

115 people / 650,000 tonnes per year.

Recycling Centre, Dallas, USA

Portfolio: \$300 million.

Design, financing, construction, and operation. Operational period of 25 years / 140,000 tonnes per year / Best recycling facility of the year by NWRA USA 2017. Management of recyclables in the cities of Dallas, University Park, Garland, Rowlett, and Mesquite (Dallas Metroplex Area).



Recycling plant, Houston, Texas, USA

Recyclables management in the city of Houston.

Population: 2.3 million inhabitants.

Portfolio: \$250 million.

Design, financing, construction, and operation. Operational period 15+5 years / Up to 145,000 tonnes per year / Best recycling facility of the year by NWRA USA 2020. Management of recyclables in the city of Houston.





Water

End-to-end public water cycle management service

Management of both Public and Private Services such as water capture, treatment, purification, distribution, sanitation, and analysis of water quality.

Operation, maintenance, and exploitation services of infrastructures – O&M

O&M contracts ensure a continuous supply of quality water, which requires the dedication, technology, professionalism, and experience necessary to achieve maximum excellence in the processes of the integrated water cycle.

Infrastructure Concessions – BOT

Design, construction, financing, and long-term operation of infrastructures, treatment plants (purification, depuration, and desalination) or reuse facilities through BOT-type contracts and take or pay mechanisms.

EPC Models (Engineering, Procurement and Construction)

Execution of design and construction projects, without involving the operation of the projects once the construction phase is completed.

Figures 2023



FCC Group

Environment

Water

Construction

Concessions



44,822,891
population served



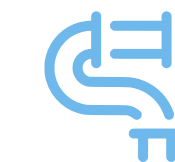
18 countries presence



14,040 employees



966 WWTP's



92,405 km
of managed
networks



291 DWTP'S



1,246 hm³/year
potable water
produced



48 SWRO's



3,353 potable water
reservoirs



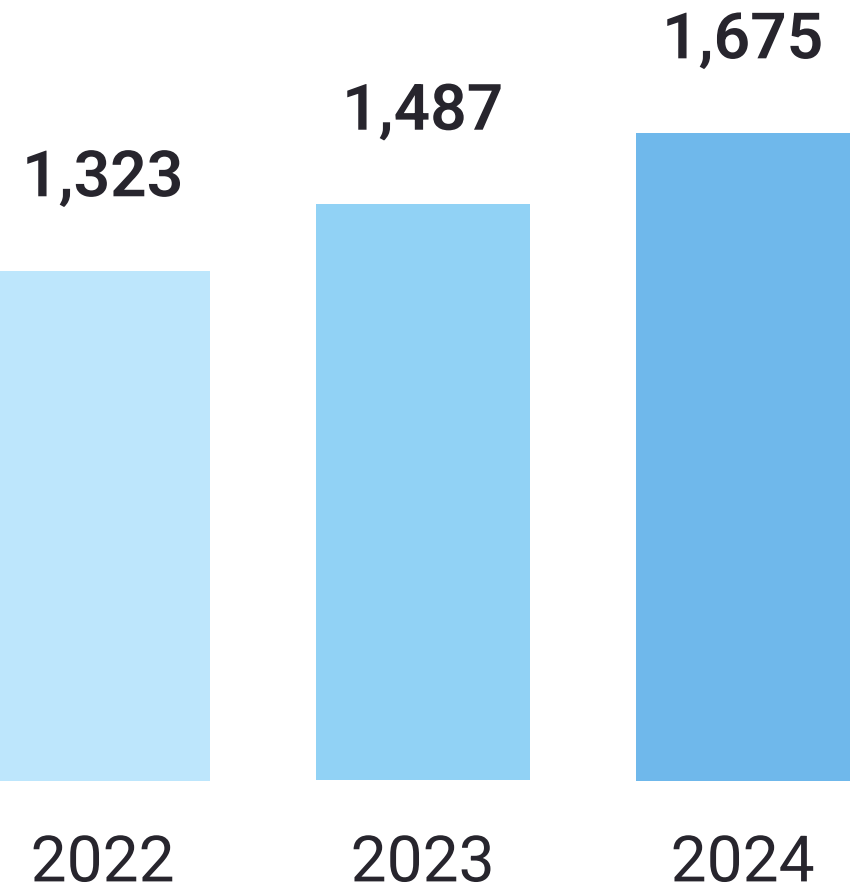
20 sports centres



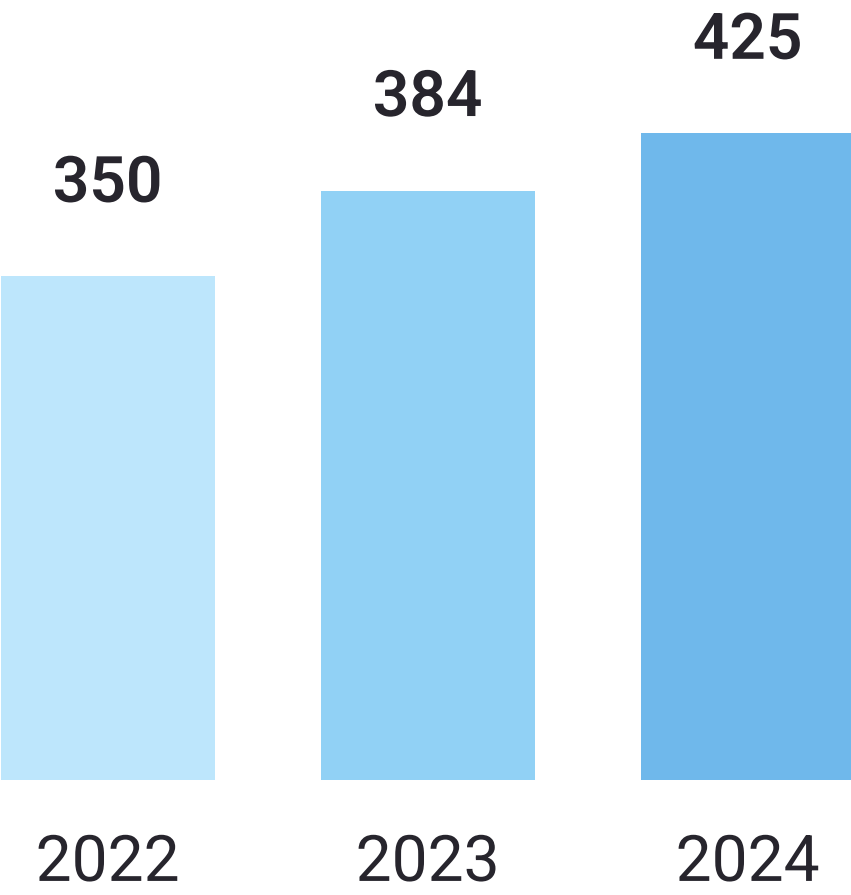
22 accredited central laboratories according to ISO-17025

Key figures 2024

Turnover
In €M



EBITDA
In € M

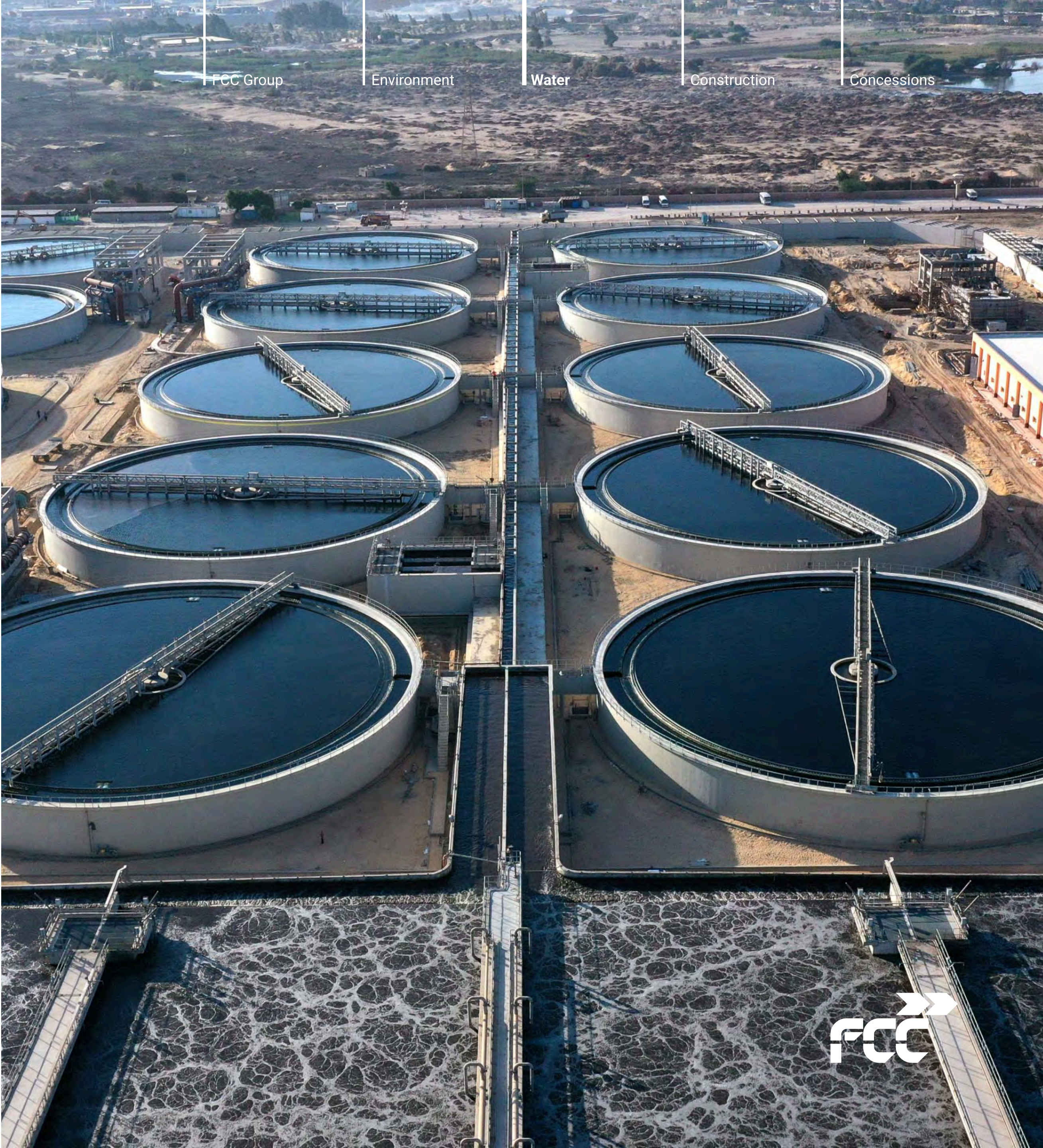


Portfolio

€22,565 M
as of 31 December 2024

People

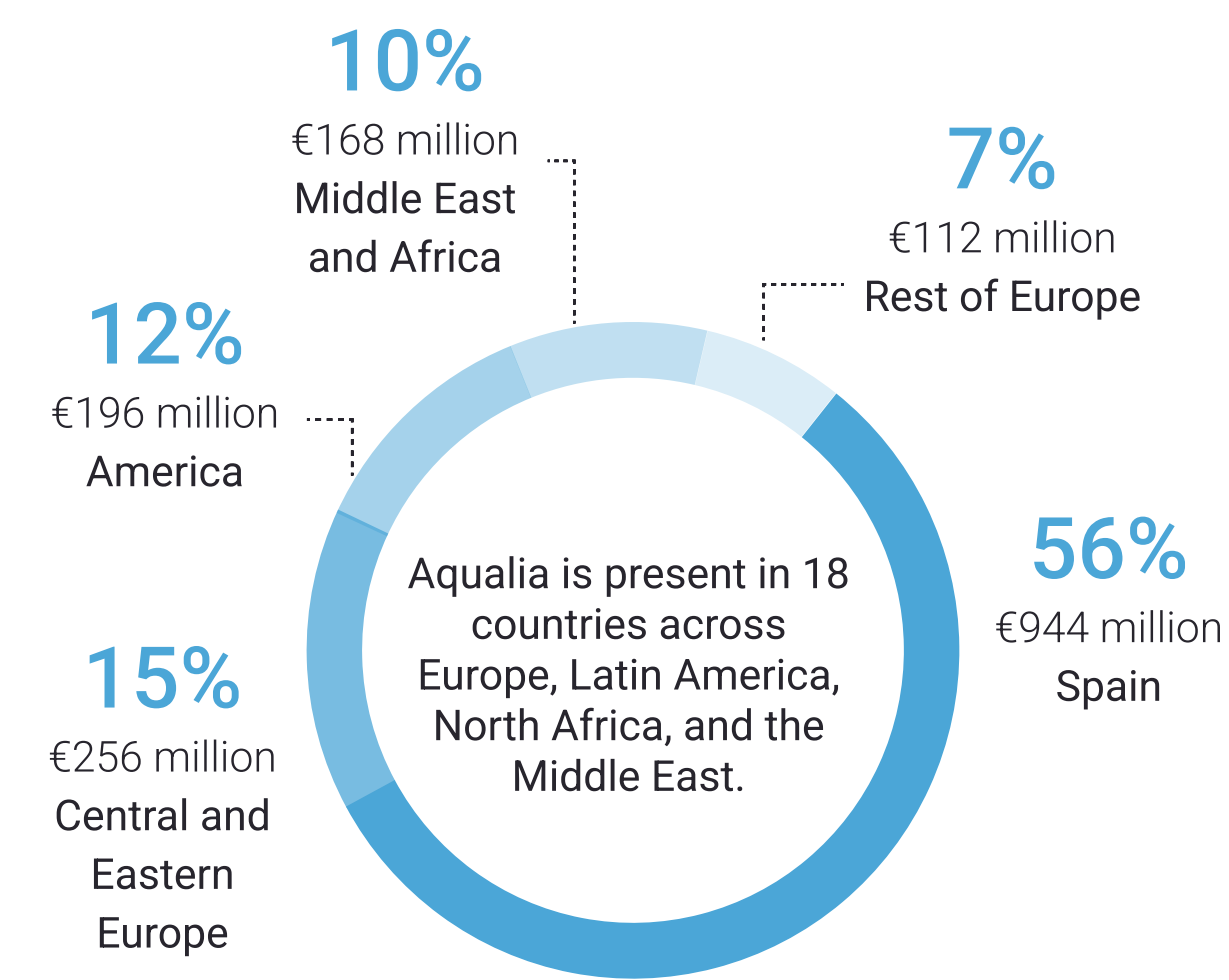
14,040



International presence



Business Breakdown 2024



Spain

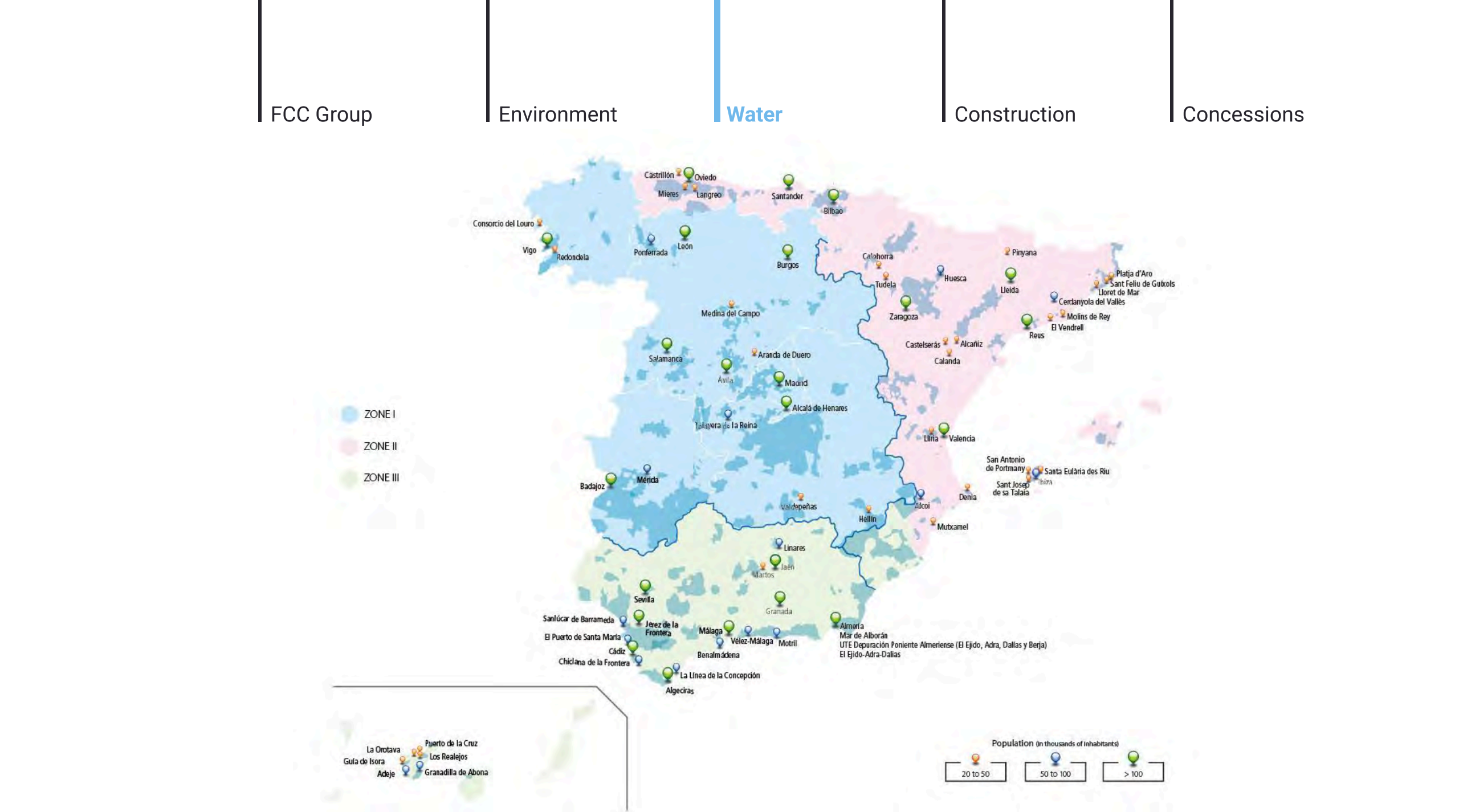
€944 M

56% of the total

International

€731 M

44% of the total



Spain - Main references

Mar de Alborán Desalination Plant in Cabo de Gata, Almería, Spain

The recovery of the Rambla Morales Desalination Plant, abandoned since 2011 by the Community of Irrigators of the same name, has involved a total investment of 99 million euros. A project that has become a technological benchmark and a relief for the overexploitation of the aquifers in the Campo de Níjar. Since 2024, the desalination plant has been operational, using a frame that provides 5 hm³ of water to the irrigation fields in the area. In 2025, it is expected that the other frames will be operational, thus reaching a total capacity of 20 hm³.



Desalination plants of Ibiza, Balearic Islands, Spain

Client: Balearic Water Agency (ABAQUA).

Population: 150,000 inhabitants. Management of the 3 desalination plants on the island of Ibiza (Ibiza, Santa Eulalia, and San Antonio), with a production capacity of 45,000 m³/day supplying 10 million m³ of water annually. Additionally includes the high interconnection system of the island of Ibiza, which links the three desalination plants with an extensive system of pipelines, reservoirs, and pumping stations.



Spain - Main references

Wastewater Treatment Plant in Lleida, Spain

Management since 1996.

Population: 144,878 inhabitants.

It is the most important wastewater treatment plant in Catalonia and the first facility in Spain to calculate and verify the Carbon Footprint in the Integral Cycle of Lleida with AENOR. It has a history of high efficiency in pollutant removal, reduction of energy costs, and development of innovative initiatives towards a circular, sustainable, and decarbonised economy.



FCC Group

Environment

Water

Construction

Concessions



Spain - Main references



FCC Group

Environment

Water

Construction

Concessions

End-to-end Water Management in Oviedo, Spain

Management since 1996.

Client: City Council of Oviedo.

Population: 220,000 inhabitants.

The only municipality in Asturias with potable water treatment using ozone to generate 1,500 l/s.

Spain - Main references

End-to-end Water Management in Salamanca, Spain

Management since 1997.

Client: City Council of Salamanca.

Population: 144,000 inhabitants.

Pioneers in Spain in the application of R&D&i for the removal of nutrients in treated wastewater.



Spain - Main references

End-to-end Water Management in Vigo, Pontevedra, Spain

Management since 1990.

Client: Vigo City Council.

Population: 294,000 inhabitants.

The largest hydraulic infrastructure in Galicia.





End-to-end Water Management in Almería, Spain

Management since 1993.

Client: Almería City Council.

Population: 201,775 inhabitants.

Leading water service in Spain, home to several R&D projects of the company.

Spain - Main references

Supply and Sewerage in Algeciras, Cádiz, Spain

Management since 1995.

Client: Algeciras City Council. Mixed company (Emalgesa), of which Aqualia holds 49% and the City Council holds 51%.

Population: 125,047 inhabitants.



End-to-end Water Management in Jerez de la Frontera, Cádiz, Spain

Management since 2013.

Client: Jerez de la Frontera City Council. Mixed company (AquaJerez).

Population: 213,688 inhabitants.

Headquarters of various R&D projects in the WWTP.



End-to-end Water Management in Alcalá de Henares, Madrid, Spain

Management since 2004.

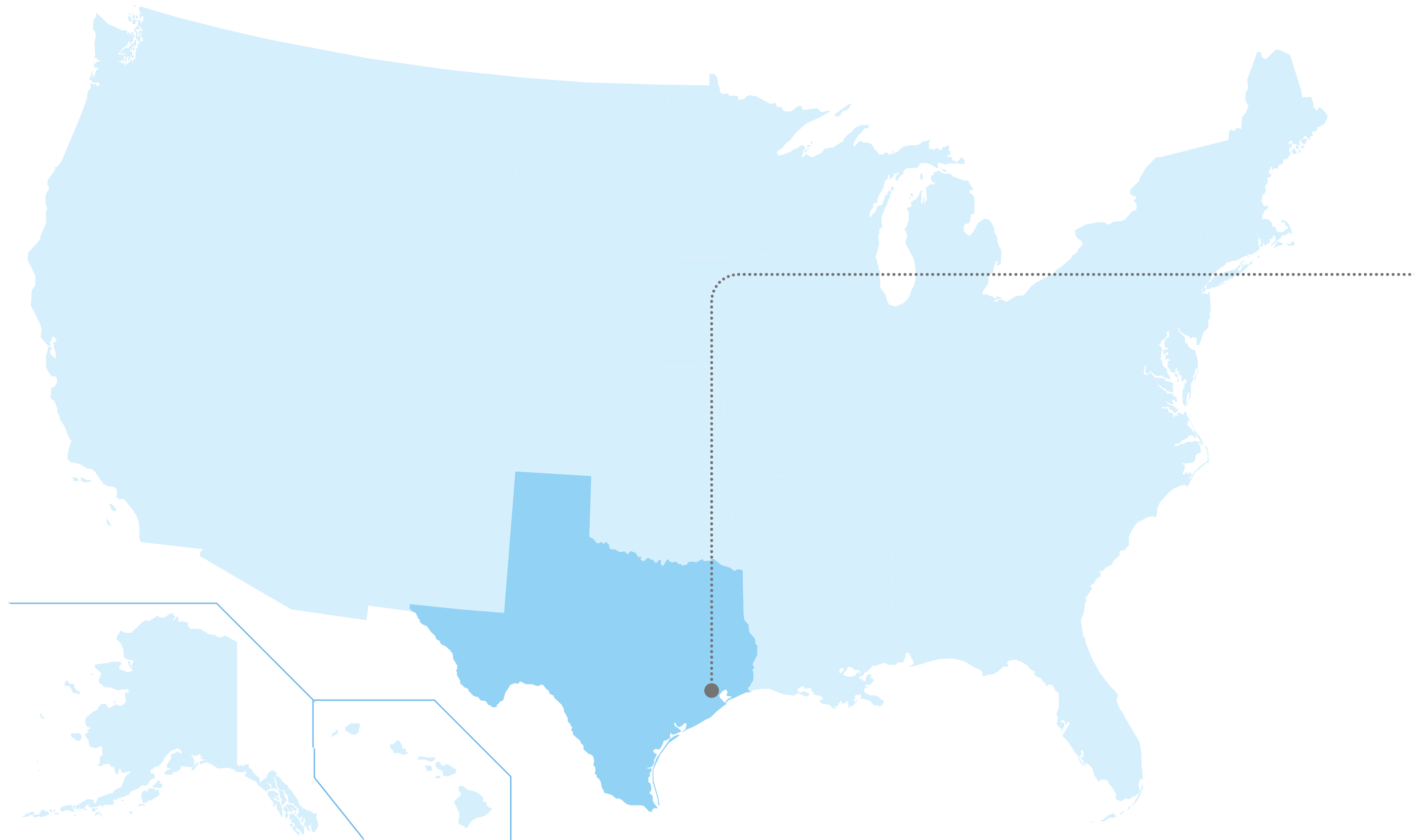
Client: Alcalá de Henares City Council.

Population: 194,000 inhabitants.

Mixed company (Aguas de Alcalá), in which Aqualia collaborates with Canal de Isabel II.



United States - Main references



Integrated Water Management in Texas, USA

Population: over 434,049 inhabitants.

The project includes the management of the integrated water cycle through 147 service contracts with municipal utility districts ("MUD, Municipal Utilities District" for short) in the outskirts of Houston.



Querétaro Aqueduct, Mexico

Management since 2011.

Project Type: BOT - Build, Operate and Transfer (20 years).

Client: State Water Commission of Querétaro (CEA).

Population: 900,000 inhabitants.

The service includes Water Capture, Pumping, Treatment, Gravity Conveyance, Distribution, and Storage. A total of 128 km of pipelines, reservoir, tunnel (4.8 km), pumping stations, reservoirs, and a treatment plant to generate 130,000 m³/day.

Latam - Main references

El Realito Aqueduct, Mexico

Management since 2011.

Project Type: BOT - Build, Operate and Transfer (25 years).

Client: State Water Commission of San Luis Potosí (CEA).

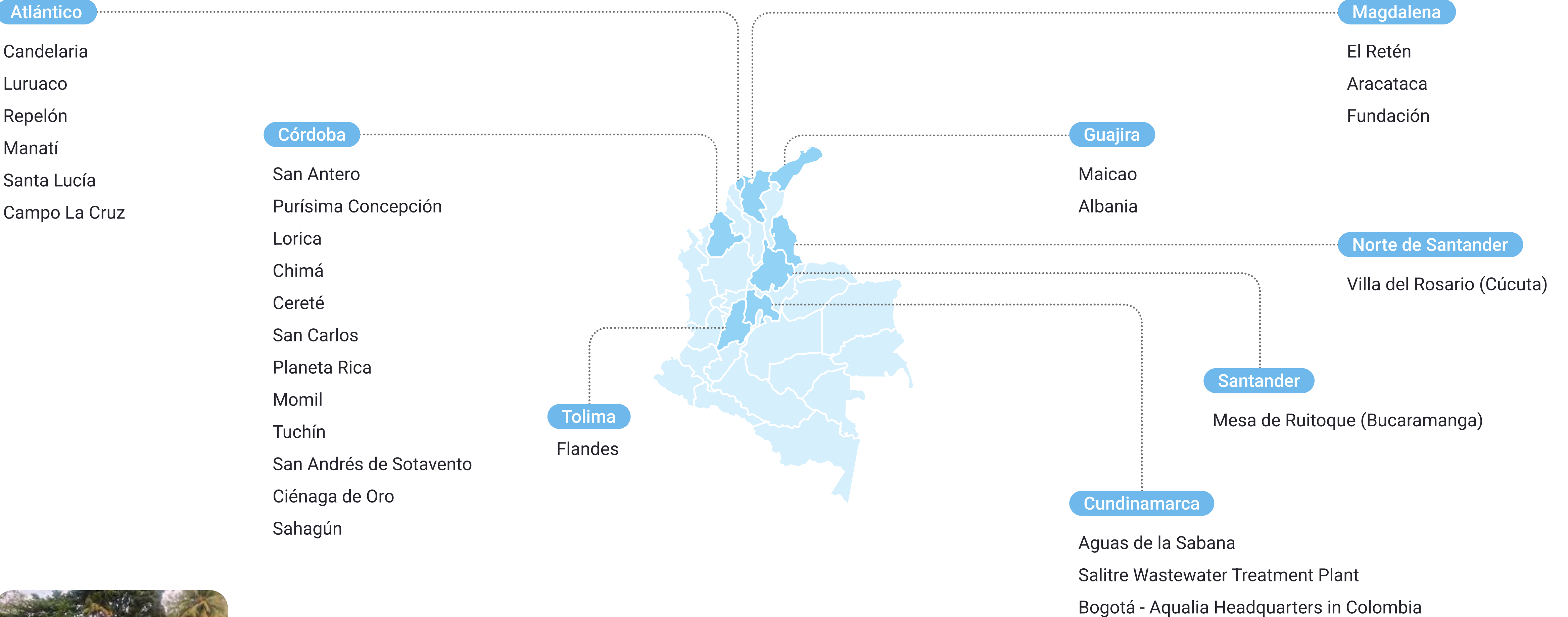
Population: 430,000 inhabitants.

Conveyance and treatment of water from the El Realito dam to San Luis Potosí.

The project includes a total of 132 km of pipelines, pumping stations, reservoirs, and a water treatment plant generating 86,400 m³/day.



Latam - Main references



End-to-end Water Management in Colombia

End-to-end Water Cycle Management since 2020 in 28 municipalities across 8 departments.

Population: Over 1,240,686 inhabitants.

El Salitre Wastewater Treatment Plant, Colombia

Population: Over 3,000,000 inhabitants.

Capacity: 600,000 m³/day.

Expansion and improvement of the El Salitre Wastewater Treatment Plant in Bogotá.



Latam - Main references



Integrated Water Management in Chincha, Peru

Population: over 345,000 inhabitants.

Project type: includes the execution and operation of 21 km of collection networks, a pumping station, wastewater treatment plants, and 7.7 km of lines for the final disposal of treated water. The new infrastructure will reduce diseases caused by untreated wastewater, improving public health and the quality of life for the inhabitants of the affected districts. The project will also enhance the circular economy in the area, as the reuse of treated water will provide a new source of water for agricultural and/or industrial use.



MENA - Main references

FCC Group

Environment

Water

Construction

Concessions

Mostaganem Desalination Plant, Algeria

Client: SONATRACH/AEC

Project Type: Design and Construction (Completed in 2012) and Operation and Maintenance through Public-Private Partnership.

Population: Over 1,200,000 inhabitants.

Capacity: 200,000 m³/day.

One of the largest desalination plants in Africa.

Desalination Plant of El Alamein, Egypt

Client: Ministry of Defence.

Project Type: Design and Construction (completed in 2019), and Operation and Maintenance (until 2027).

Population: 1,000,000 inhabitants.

Capacity: 150,000 m³/day.

The first and only desalination plant executed by a single company, and also Spanish. One of the top 3 plants in the world in 2020 according to GWI and the best in Egypt.



MENA - Main references

FCC Group

Environment

Water

Construction

Concessions

New WWTP of Cairo, Egypt

Management since 2009.

Client: NUCA (Ministry of Housing).

Project Type: Financing, Design and Construction (completed in 2013), and Operation and Maintenance (18 years).

Population: 1,000,000 inhabitants.

Capacity: 250,000 m³/day.

First Public-Private Partnership project in Egypt.

MENA - Main references

EDAR of Abu Rawas, Egypt

Client: CAPW (Ministry of Housing).

Project Type: Design and construction (ongoing), and Operation and Maintenance.

Population: 5,500,000 inhabitants.

Capacity: 1,600,000 m³/day.

Largest EPC (Engineering, Procurement and Construction) of a biological plant in Africa.



FCC Group

Environment

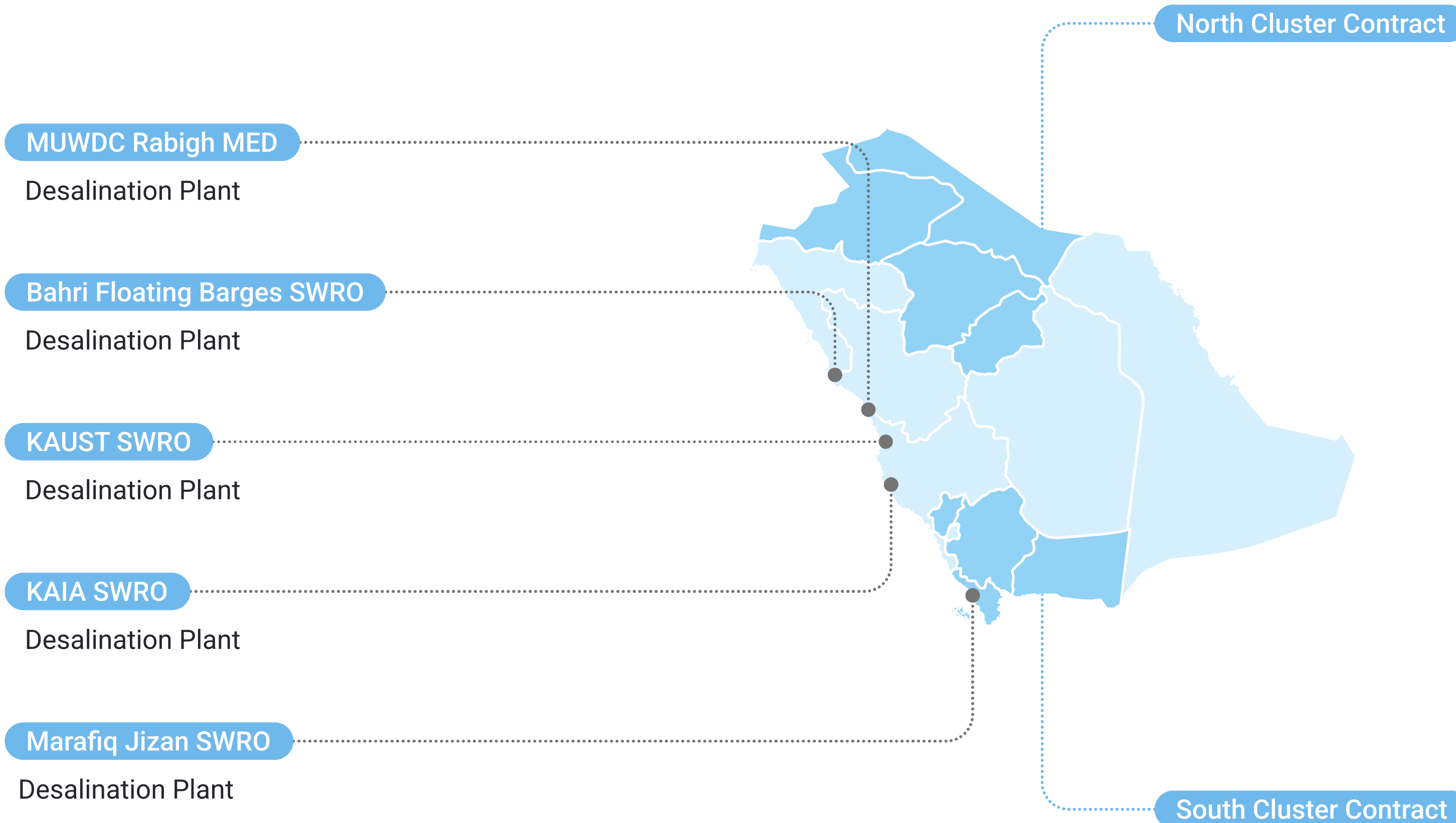
Water

Construction

Concessions



MENA - Main references



End-to-end Water Management and O&M in Saudi Arabia

Management since 2020.

Project type: Management, Operation and Maintenance.

Population: over 8,000,000 inhabitants.

The project includes 631 municipalities spread across 8 provinces in the Northern and Southern Clusters of Arabia: Assir, Jizan, Al Baha, Najran, Qassim, Hail, Al Jouf, and Northern Borders.

Water Supply Network, Riyadh, Saudi Arabia

Management since 2011.

Client: National Water Company (Government of Saudi Arabia).

Project type: O&M – Operation and Maintenance (5 years).

Population: Over 3,000,000 inhabitants.

Reduction of NRW and optimisation of part of the supply networks.



Hydraulic Installations of Sohar Port, Oman

Client: MAJIS INDUSTRIAL SERVICES (Government of Oman).

Project type: O&M – Operation and Maintenance (20 years).

This contract includes numerous water intake and pumping infrastructures, desalination, supply, treatment, and sanitation.



End-to-end Water Management in Al Ain, UAE

Management since 2012.

Project type: Water treatment and sanitation system.

The initial contract established a seven-year period, until 2019, valued at 76.3 million euros. Extension of 7 years.



MENA - Main references

End-to-end Water Management in Abu Dhabi and some islands, UAE

Management since 2019.

Project type: CIA – Integrated Water Cycle (7 years) for Abu Dhabi and the adjacent islands of Al Reem, Al Maryah, and Al Saadiyat.

Capacity: up to 280,000 m³/day (over 100 billion litres per year).

The project manages 1,320 km of networks and 54 wastewater pumping stations.



Al-Dhakhira WWTP, Qatar

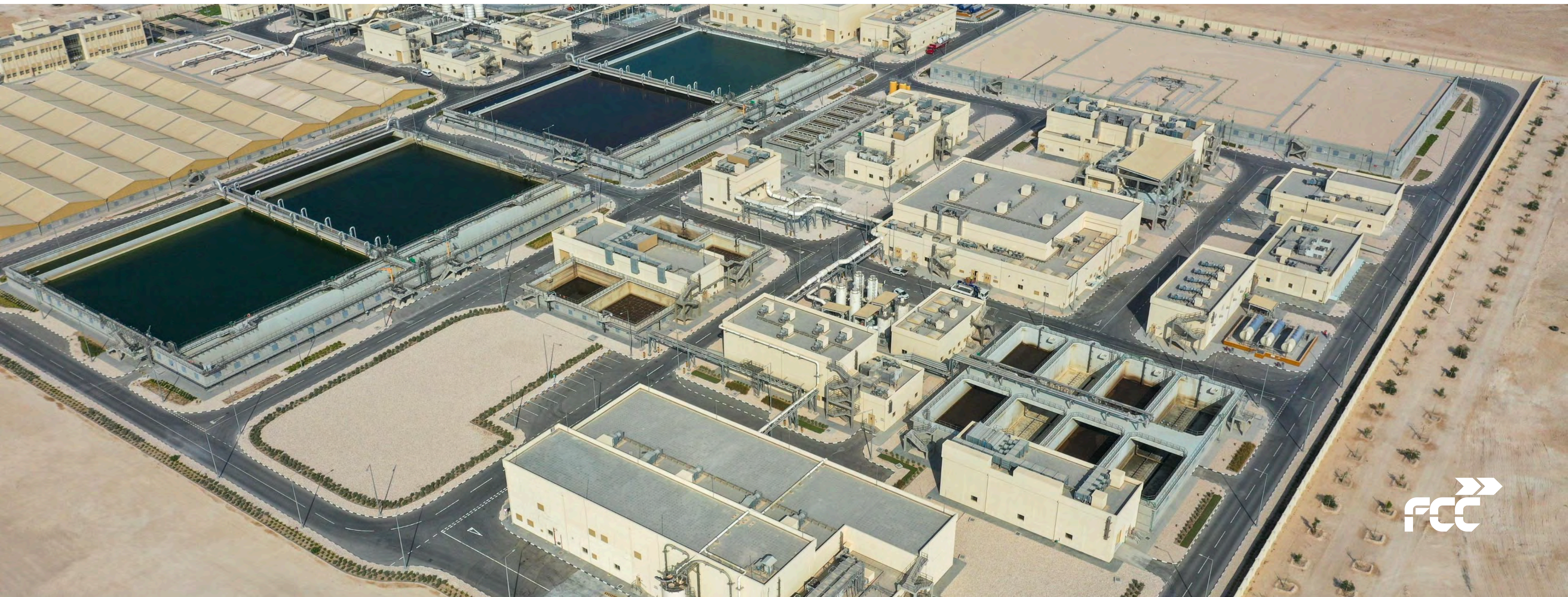
Management since 2022.

Client: Public Works Authority (Government of Qatar).

Project type: Design, Construction, Operation, and Maintenance.

Population: over 200,000 inhabitants.

Capacity: 56,200 m³/day.



End-to-end Water Management in Georgia

Management since 2022.

Population: 1,437,833 inhabitants.

The project includes infrastructure in Tbilisi, Mtskheta, and Rustavi, including: the Zhinvali dam and reservoir with a capacity of 520 hm³, 7 water treatment plants, 1 wastewater treatment plant, 58 pumping stations, 118 storage tanks, and 4,300 km of distribution networks and 1,700 km of sewage networks.



Europe - Main references

End-to-end Water Management in Ostrava, Czech Republic

Population: 1,200,000 inhabitants.

Capacity: 279,682 m³/day.

Main operator in Moravia and Silesia, managing the sewage network in 76 municipalities with a total of 1,844 km, a supply network of 5,061 km, 3 large water treatment plants, 68 purification plants, and 157 pumping stations. The project is one of the few cases of cross-border water supply, serving 100,000 inhabitants in Poland.





Europe - Main references



FCC Group

Environment

Water

Construction

Concessions

Agency

Retiers, Ille-et-Vilaine (35)

Agency

Uzel (22)

Aqualia Sector

Rennes (35)

SAAPD Agency

Dreux, Eure-et-Loir (28)

Agency

Rambouillet (78)

Agency

Loiret (45)

Agency

Aubergenville (78)

Agency

L'Isle-Adam (95)

Agency

Goussainville (95)

Sector

Lyon (69)

Headquarters

Neuilly-sur-Seine (92)

Agency

Andrésy (78)

End-to-end Water Management in Île de France and Brittany, France

Management since 2019.

Population: 970,000 inhabitants.

Management of water supply in 101 municipalities and management of sewage networks or treatment in another 100 municipalities.

Europe - Main references

End-to-end Water Management in Caltanissetta, Italy

Management since 2006.

Population: 273,000 inhabitants.

Management of the end-to-end water cycle in 22 municipalities of the province of Caltanissetta in Sicily. The project includes a water network of 993 km, a pipeline network of 180 km, a sewage network of 778 km, 21 treatment plants, 1 purification plant, 21 wells, and 42 tanks.



Europe - Main references

End-to-end Water Management in Elvas, Portugal

Management since 2009.

Population: 74,000 inhabitants.

Management of over 12,500 supply and wastewater treatment contracts in the municipalities of Elvas, Vila Boim, Terrugem, Vila Fernando, Barbacena, São Vicente, and Santa Eulália.





Construction

Civil works

- Railway infrastructures
- Roads
- Bridges
- Tunnels
- Maritime infrastructures
- Airport infrastructures
- Hydraulic infrastructures

Building

- Housing units and estates
- Non-residential buildings
- Rehabilitation

Industrial

- Electromechanical installations and maintenance
- Electrical networks and railway works
- Industrial construction
- Systems
- Infrastructure maintenance
- Prefabrication
- Corporate image

Figures



FCC Group

Environment

Water

Construction

Concessions



Over 125 years of experience



We are global and local



Awarded the **largest urban transport infrastructure contracts** (Riyadh Metro, Toronto Rail Network)



Leader in urban transport infrastructures



Present in **24 countries**



One of the **top 28** construction companies in the world



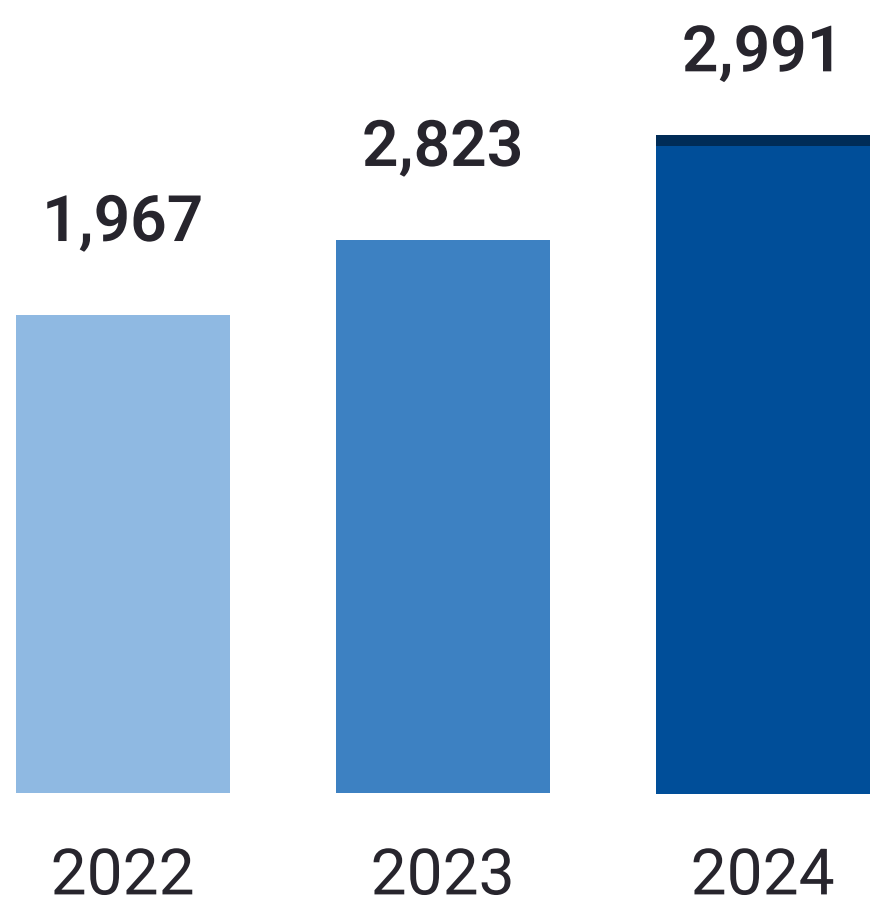
More than 250 million people use our infrastructures



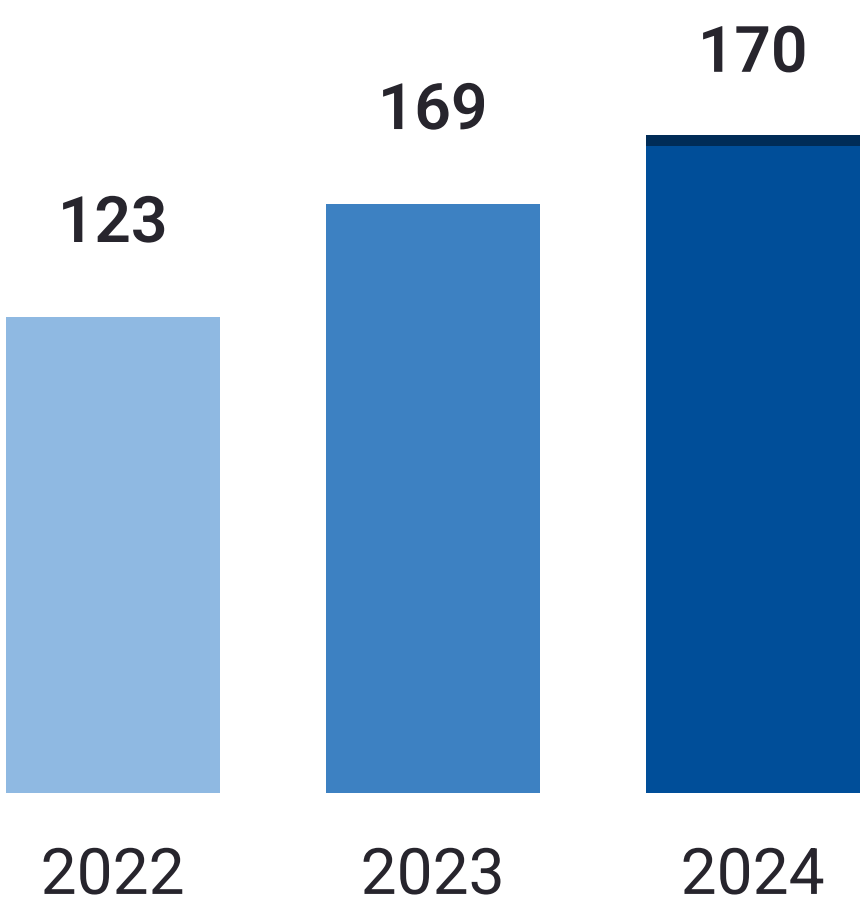
International benchmark in the selective execution of large civil works (tunnels, railways, metro...)

Key figures 2024

Revenue
In € million



EBITDA
In € million



Backlog

€6,368 M
31 December 2024

People

7,268



Key figures 2024

FCC Group

Environment

Water

Construction

Concessions

Europe

Portugal
Spain
France
Italy
United Kingdom
Ireland
Belgium
Netherlands
Germany
Norway
Poland
Romania

MENA

Egypt
Saudi Arabia
Qatar

North America

USA
Mexico
Canada

Central America

Panama
Costa Rica

South America

Colombia
Peru
Chile
Brazil

Oceania

Australia

International Revenue 2024

30%

€883 million
Europe and
others

23%

€678 million
America

9%

€260 million
Middle East,
North Africa

1,821 M€

61%

International backlog

€3,956 M

62% of total,
31 December 2024

Main references - In progress

Lines 2 and 4 of the Lima Metro, Peru



Main references - In progress

Industrial Bridge, Chile



Main references - In progress

PTAR El Salitre, Colombia



Main references - In progress

Guillermo Gaviria Echeverri Tunnel, Colombia



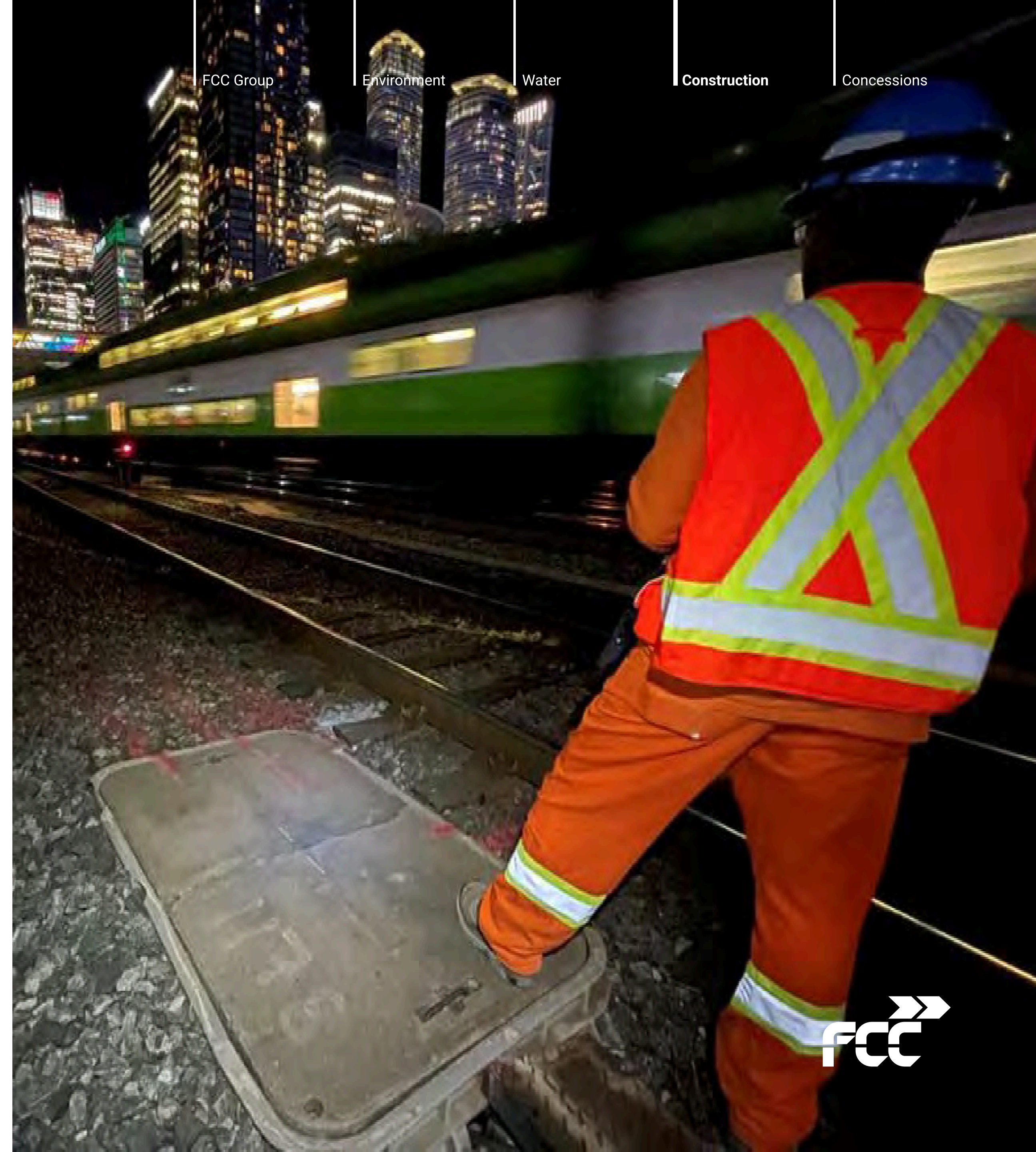
Main references - In progress

Scarborough Subway Extension, Canada



Main references - In progress

RER-3, Toronto Regional Rail Network, Canada



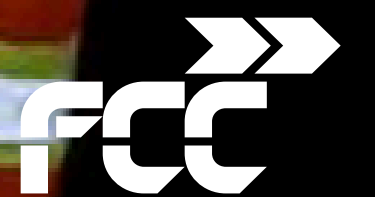
FCC Group

Environment

Water

Construction

Concessions



Main references - In progress

FCC Group

Environment

Water

Construction

Concessions



Metro Ontario and Pape Tunnel, Canada

Main references - In progress

Replacement of 9 Bridges in Pennsylvania, United States



Main references - In progress

Railway sections, Romania



Main references - In progress

A9 Motorway Badhoevedorp - Holendrecht, Netherlands



Main references - In progress

A-465 Sections 5-6, Wales, United Kingdom



Main references - In progress

Cancer Treatment Centre Pallas, Netherlands



Main references - In progress

Sotra Project, Norway





Main references - In progress

Melecas-Vedrões Line, Portugal



Main references - In progress

Neom, Saudi Arabia



Main references - In progress

FCC Group

Environment

Water

Construction

Concessions

Mediterranean Corridor. Nijar-Andarax section, Spain





Main references In progress



FCC Group

Environment

Water

Construction

Concessions

Insular ring of Tenerife, Spain

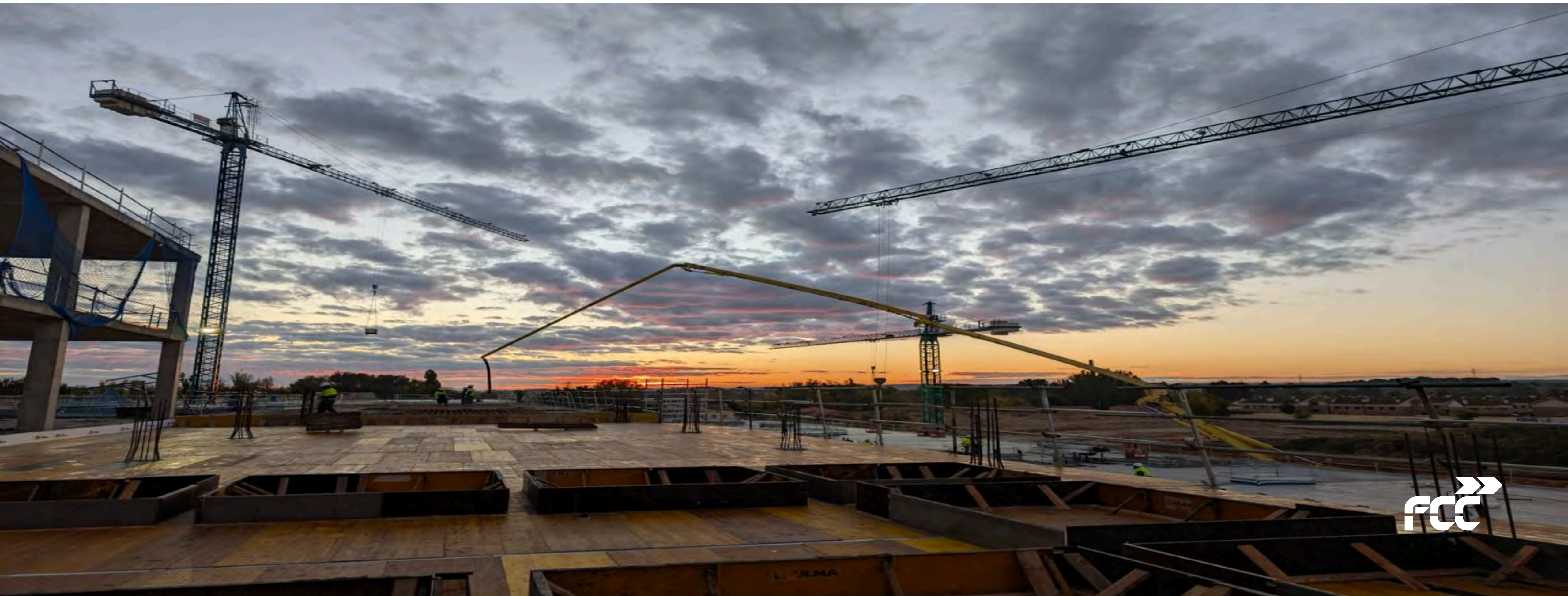
Main references - In progress

Platform of the Mediterranean High-Speed Corridor Murcia-Almería. Section Nijar-Andarax, Spain



Main references - In progress

Hospital Aranda del Duero, Spain



Main references - In progress

Access to the High-Speed Station La Sagrera, Spain



Section 2 Maya Train, Mexico





Main references - Completed



Fuel storage tanks A. International Lima, Peru

Main references - Completed

FCC Group

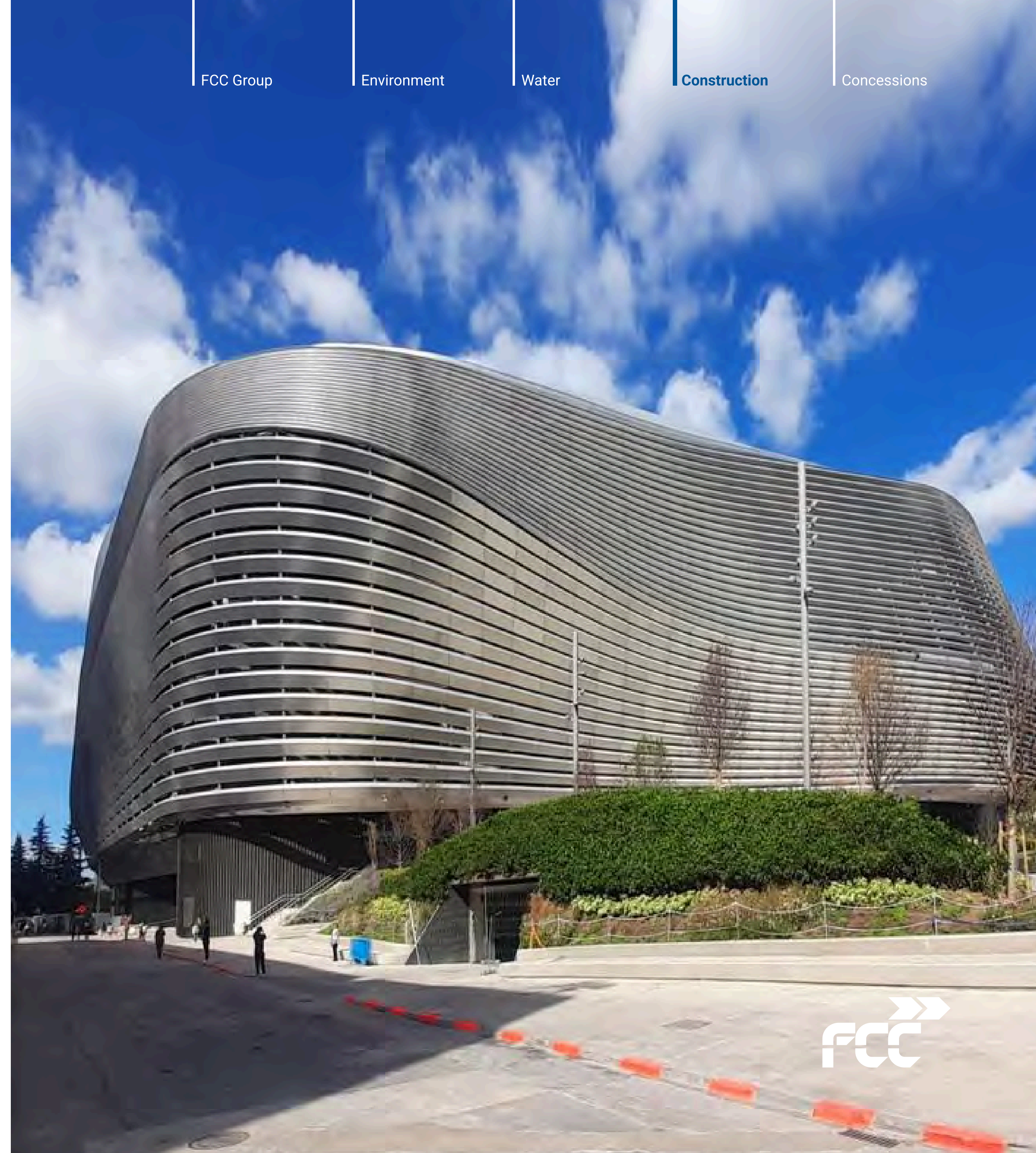
Environment

Water

Construction

Concessions

Santiago Bernabéu Stadium Renovation, Spain







Main references - Completed

Wastewater treatment plant in Glina, Romania





Main references - Completed



- FCC Group
- Environment
- Water
- Construction**
- Concessions

Haren Prison, Belgium

Main references - Completed

Line 5 Bucharest Metro, Romania



Main references - Completed

New runway Bacau Airport, Romania



FCC Group

Environment

Water

Construction

Concessions

Main references - Completed

New runway Dublin Airport, Ireland



Main references - Completed

Grangegorman University, Ireland



Gerald Desmond Bridge, United States



Main references - Completed

El Alamein Desalination Plant, Egypt



Main references - Completed

Abu Rawash Wastewater Treatment Plant, Egypt



University Hospital Salamanca, Spain



Main References - Completed

Pizarro Photovoltaic Plant, Spain



Main references - Completed

Fuel Storage Plant, Peru





Activities



FCC Group

Environment

Water

Construction

Concessions



Concessions



Road infrastructures



Urban transport



Social infrastructures*
Includes sanitary facilities and public buildings



Other infrastructures



Figures



Leaders
in urban transport
concessions



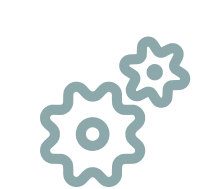
Present in **5 countries**



More than **100 million** people use
our concessions



Specialised in
sustainable mobility
infrastructure



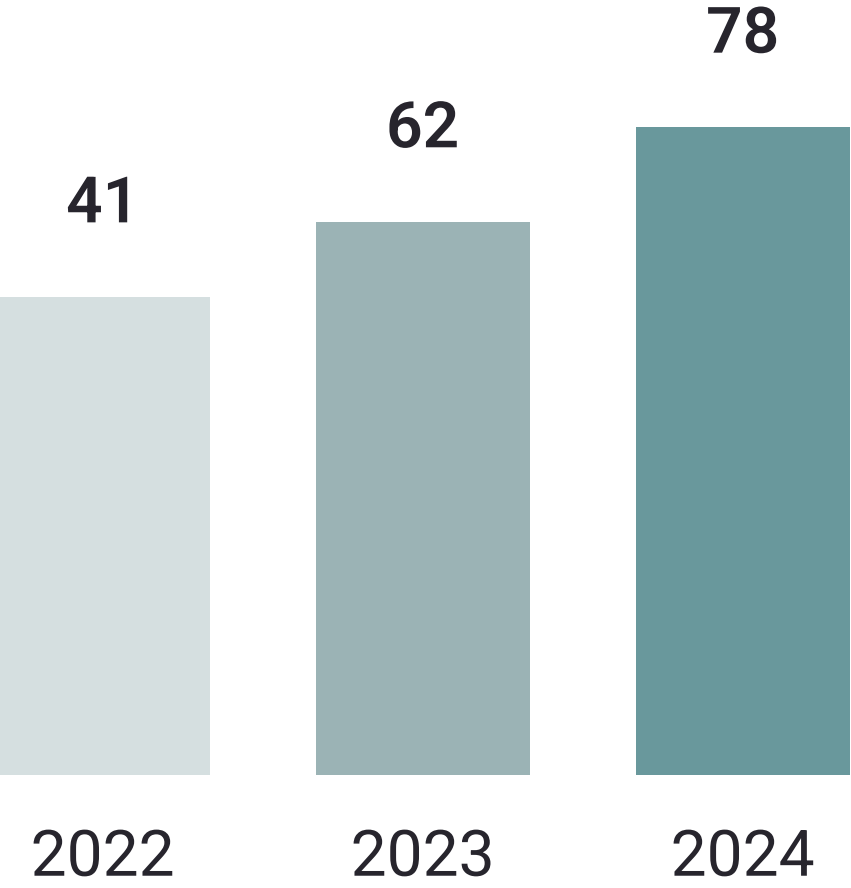
We are part of the **FCC Group**, an international
leader in infrastructure



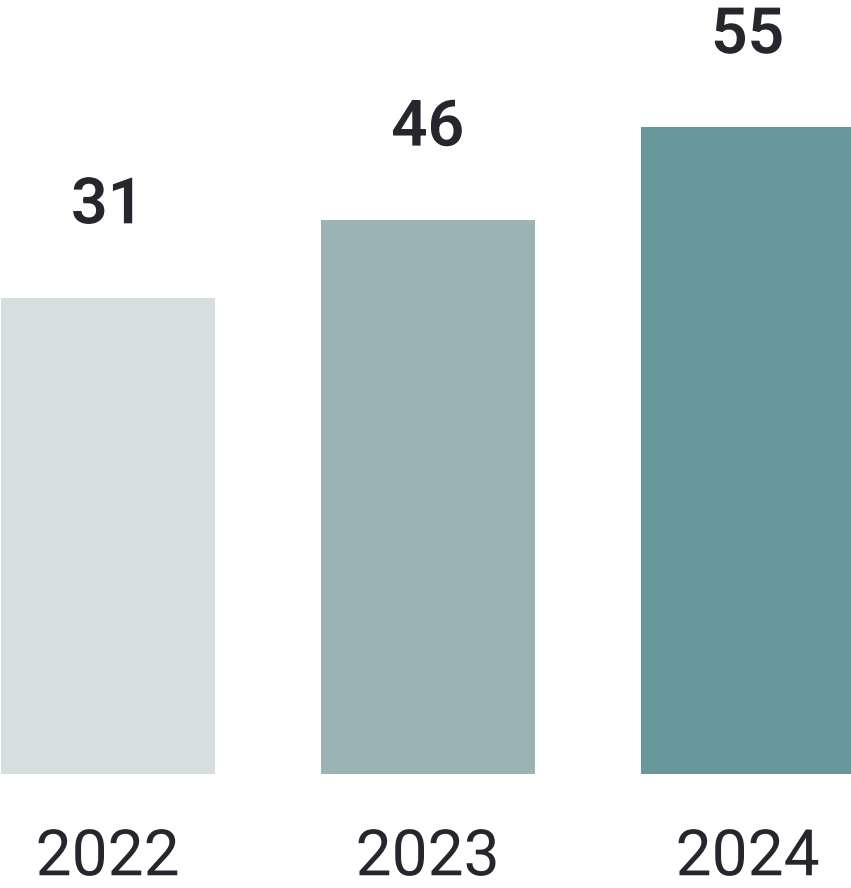
Present in **social**
infrastructure

Key Figures 2024

Revenue
In € million



EBITDA
In € million



Portfolio of Concessions

14 concession companies
3 operators

People

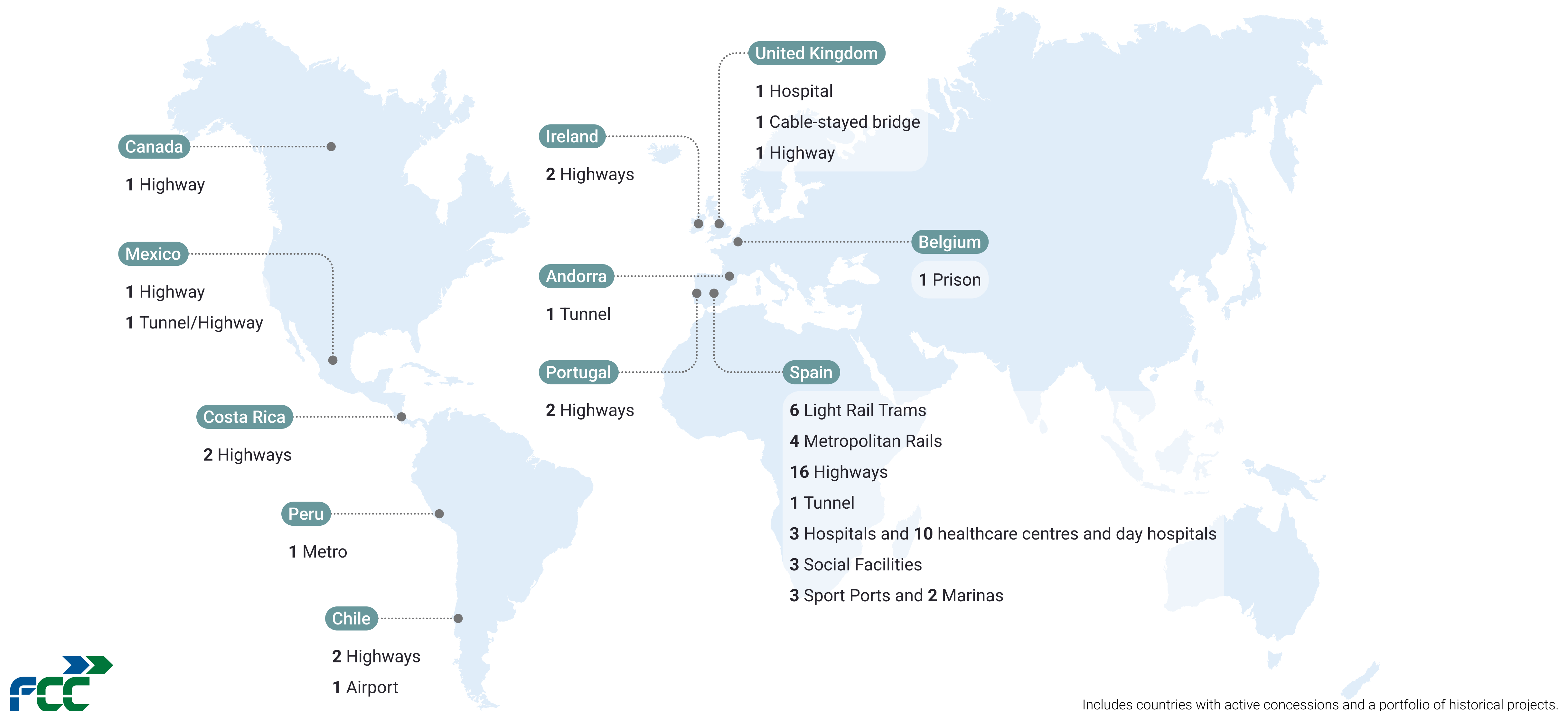
171



International presence



Global Infrastructure PPP Projects



Includes countries with active concessions and a portfolio of historical projects.









Line 2 and 4 Lima Metro, Peru



Main references

FCC Group

Environment

Water

Construction

Concessions

Murcia Tram, Spain



Main references

FCC Group

Environment

Water

Construction

Concessions



Parla Tram, Spain

Main references

Trambaix, Spain





Main references

FCC Group

Environment

Water

Construction

Concessions

Zaragoza Tram, Spain



Haren Prison, Belgium



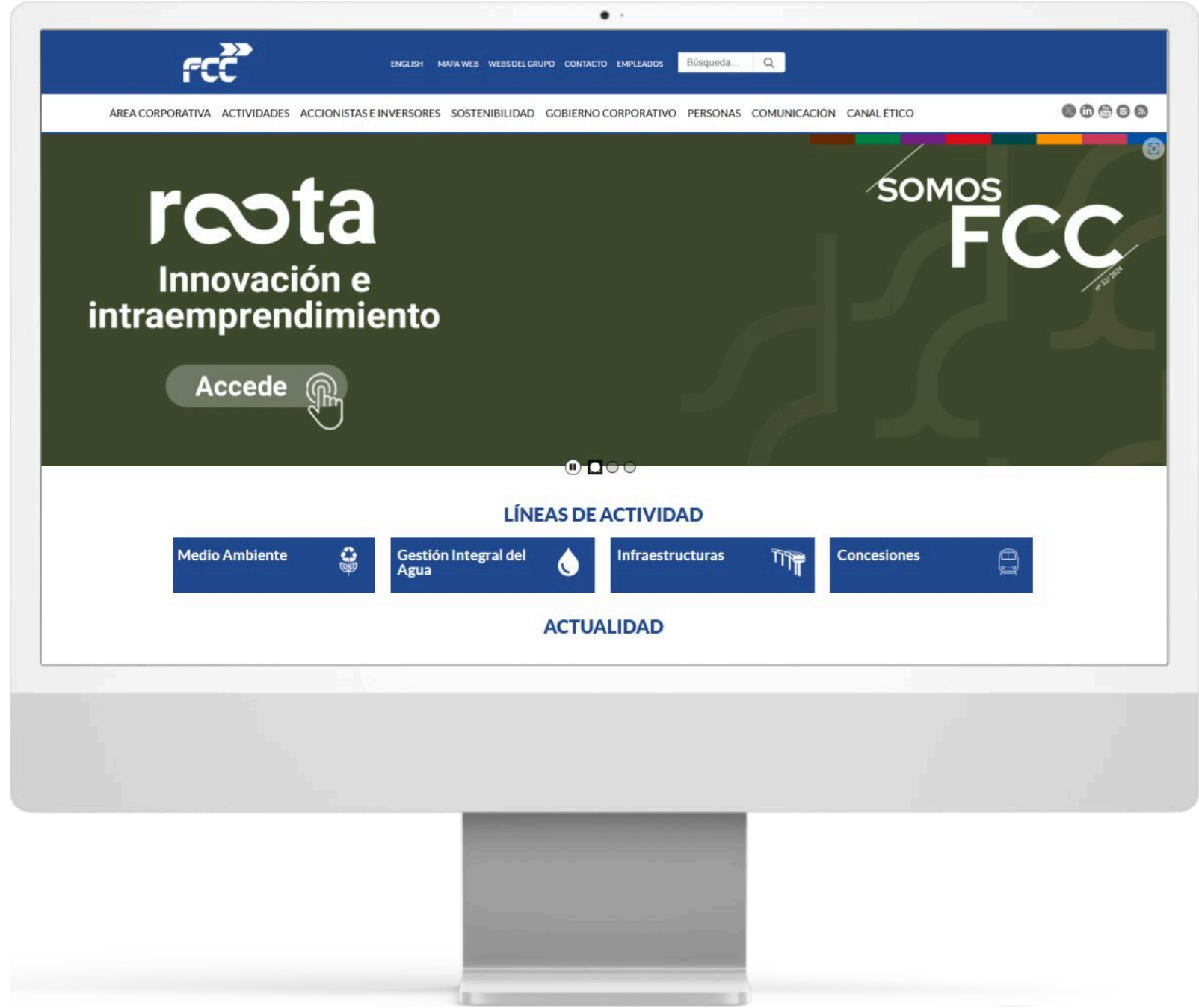


Main references

Marina Port Torredembarra, Spain



Websites



FCC Group

Environment

Water

Construction

Concessions

FCC Group



fcc.es



Water



aqualia.com



Construction



fccco.com



fccindustrial.com



Concessions



fccconcesiones.com



Environment



fccma.com



fccambito.es



fcc-group.eu



fccenvironment.co.uk



fccenvironmental.com

- This document may contain forward-looking statements regarding the intentions, expectations, or forecasts of the FCC Group or its management as of the date of its preparation, relating to various aspects such as the growth of different business lines, the results of the FCC Group, or other matters concerning its activities and situation.
- These forward-looking statements or forecasts do not, by their nature, constitute guarantees of future performance, being subject to risks, uncertainties, and other relevant factors that could cause actual developments and results to differ materially from those expressed in these intentions, expectations, or forecasts.
- This document does not constitute an offer or invitation to acquire or subscribe for shares, in accordance with Law 6/2023, of 17 March, on Securities Markets and Investment Services, Royal Decree-Law 5/2005, of 11 March, and/or Royal Decree 814/2023, of 8 November, and its implementing regulations. Furthermore, this document does not constitute an offer to purchase, sell, or exchange, nor a request for an offer to purchase, sell, or exchange securities, nor a request for any vote or approval in any other jurisdiction.
- This document or any of its parts does not constitute a contractual document, nor may it be used to integrate or interpret any contract or any other type of commitment.
- The information presented in this statement should be taken into account by all individuals or entities that may need to make decisions or prepare or disseminate opinions regarding securities issued by the FCC Group. All are encouraged to consult the public documentation and information communicated or registered by the FCC Group with the National Securities Market Commission.
- This document contains financial information that has been audited and prepared in accordance with International Financial Reporting Standards (IFRS).