



Corporate Presentation

2025



FCC Group

The FCC Group	3
Key figures	4
Diversified business model	5
Leadership position in all areas	8
International presence	9
Integrated offering	10
Value creation	11
Corporate Governance Structure	13
Management team	14



FCC Group

Environment

Water

Construction

Concessions



Over
125 years
of experience



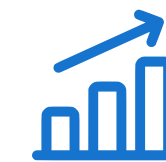
Over
72,000
employees



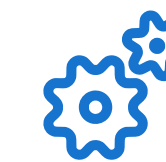
International leader in environmental services, in the comprehensive management of water, in infrastructure construction, and in the development of concession projects.



Operations in over **25 countries**,
51% of revenue from international markets



High **revenue stability**



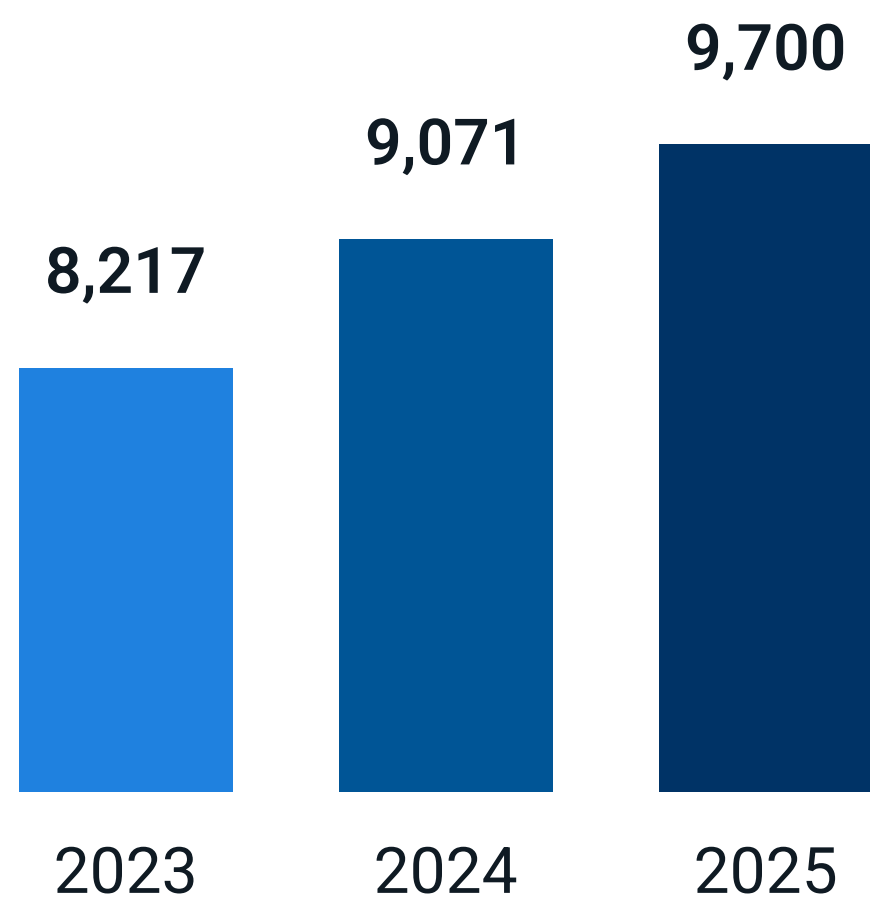
Integrated service
offering



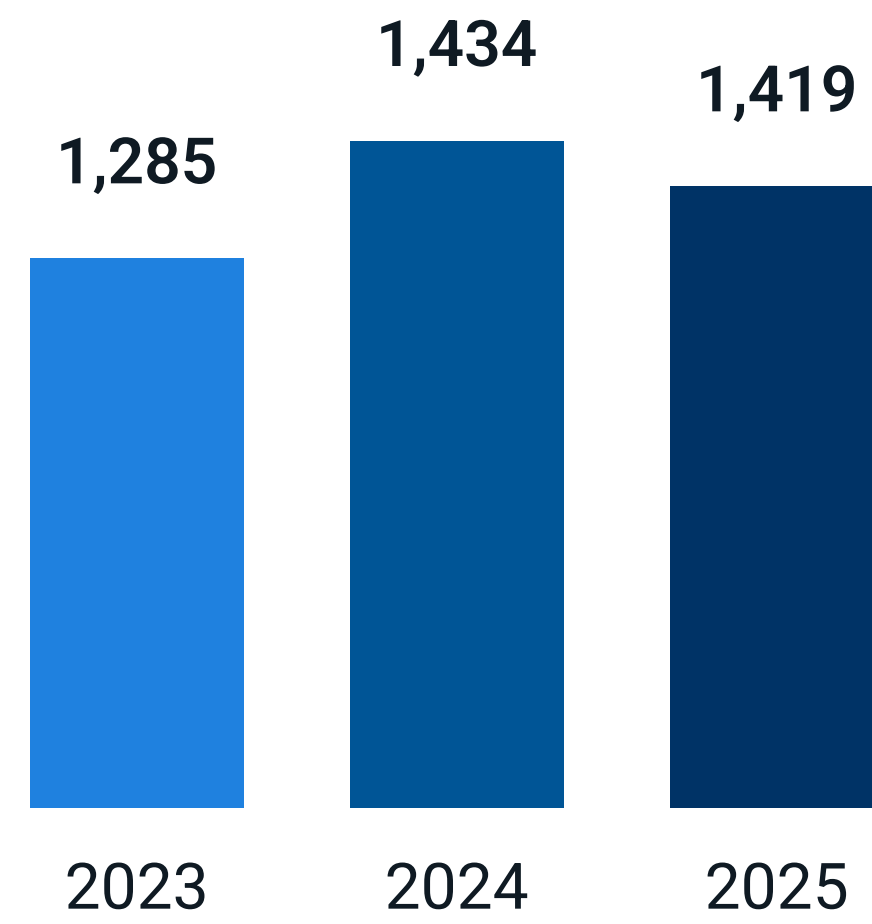
€9,700 M in revenue
€1,419 M EBITDA in 2025

Key figures 2025

Revenue In €M



EBITDA In €M



Portfolio

€51.607M

as of 31 December 2025

People

+72,000

Grupo FCC

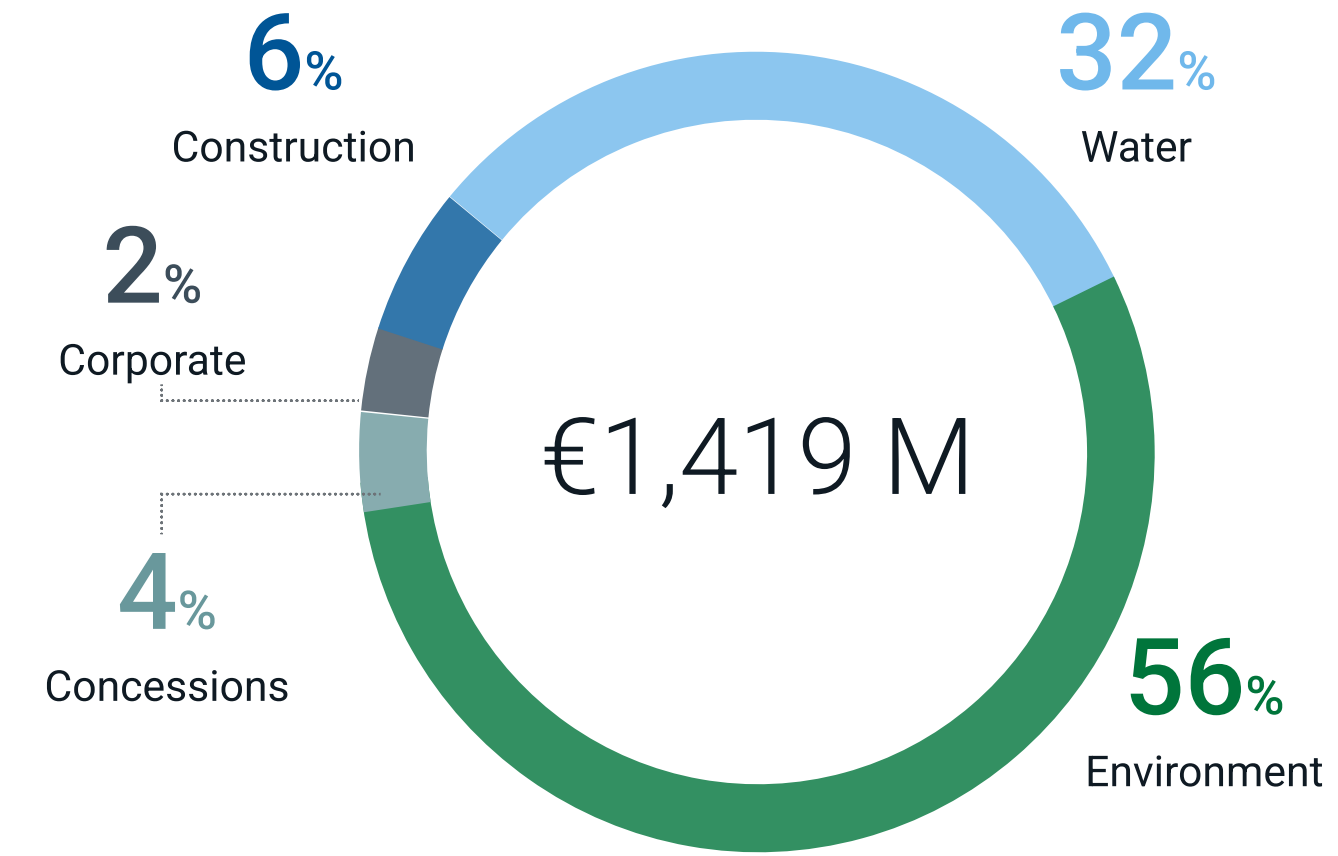
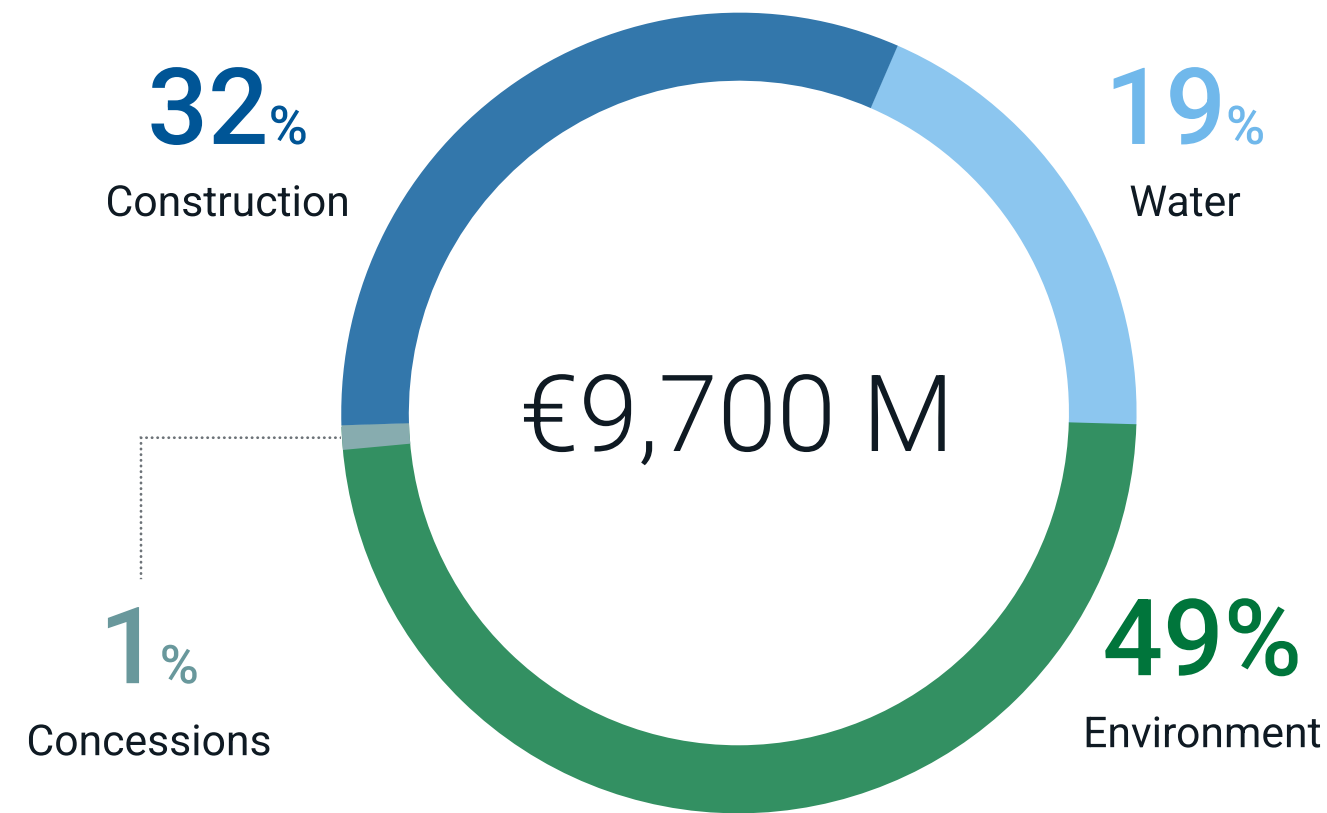
Medio Ambiente

Agua

Construcción

Concesiones

Diversified business model



Revenue by Business Area 2025

Environment	€4,740 M
Water	€1,790 M
Construction	€3,092 M
Concessions	€112 M
Corporate	(34) M€

EBITDA by Business Area 2025

Environment	€790 M
Water	€449 M
Construction	€86 M
Concessions	€60 M
Corporate	€34 M

Diversified business model

Environment

- Municipal waste collection and street cleaning
- Parks and ground maintenance
- Waste treatment and recycling
- Energy recovery from waste
- Industrial waste management
- Soil and environmental liability remediation



Water

- Municipal concessions for water cycle management (MWC).
- Infrastructure concessions (BOT).
- Operation and maintenance (O&M).
- Technology and Networks (EPC).



Construction

- Civil engineering
- Railway works
- Industrial building
- Concessions
- Infrastructure maintenance
- Construction prefabricates
- Corporate image



Concessions

- Road infrastructure
- Urban transport
- Social infrastructure
- Other infrastructure



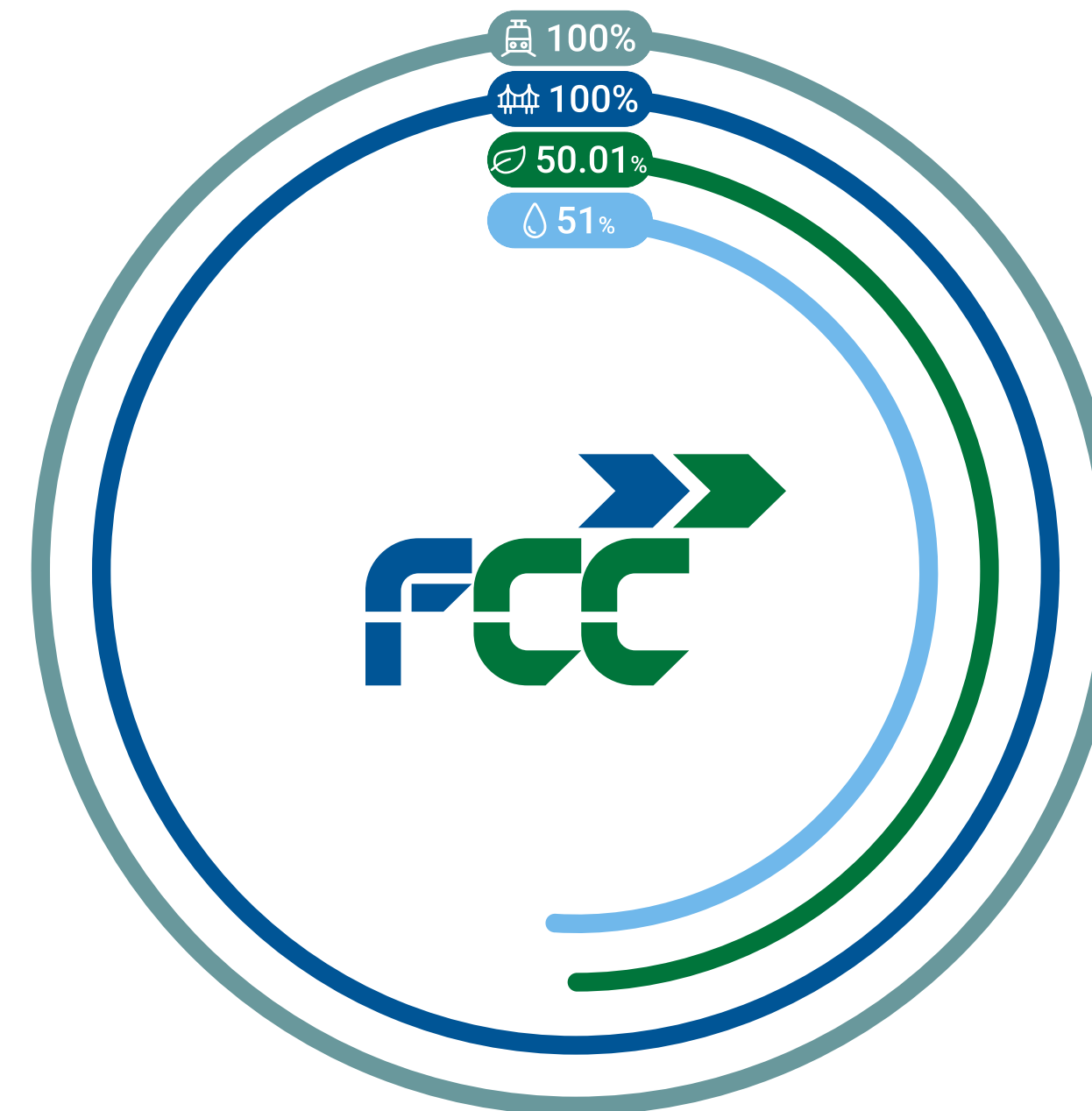
Diversified business model

 FCCenviro

FCC Medio Ambiente (Spain)	100%
FCC Ámbito	100%
FCC Environnement (France)	100%
FCC Meio Ambiente (Portugal)	100%
FCC Environment (UK)	100%
FCC Environment (CEE)	100%
FCC Environmental Services (USA)	100%

 Concessions

FCC Concessions	100%
-----------------	------



 Aqualia

Aqualia Intech	100%
Aqualia Colombia	100%
Aqualia Czech Republic	100%
Aqualia France	100%
Aqualia Georgia	100%
Aqualia Mexico	100%
Aqualia Portugal	100%
Aqualia USA	100%

 Construction

FCC Construcción	100%
FCC Industrial	100%
Convensa	100%
Matinsa	100%
Prefabricados Delta	100%
Megaplás	100%

Leadership position in all Areas



Environment

#1 in Spain
 #1 in integrated waste management in Central and Eastern Europe
 Top 3 in UK
 Top 10 in the world

Water

#1 in Spain²
 #4 in Europe²
 #9 in the world²

Construction

#3 in Spain¹
 Among the 10 largest construction companies in Europe²

Concessions

Among the top 10 concessionaires in Europe



¹ By revenue volume

² Source: December 2024 GWI Ranking

International Presence



FCC Group

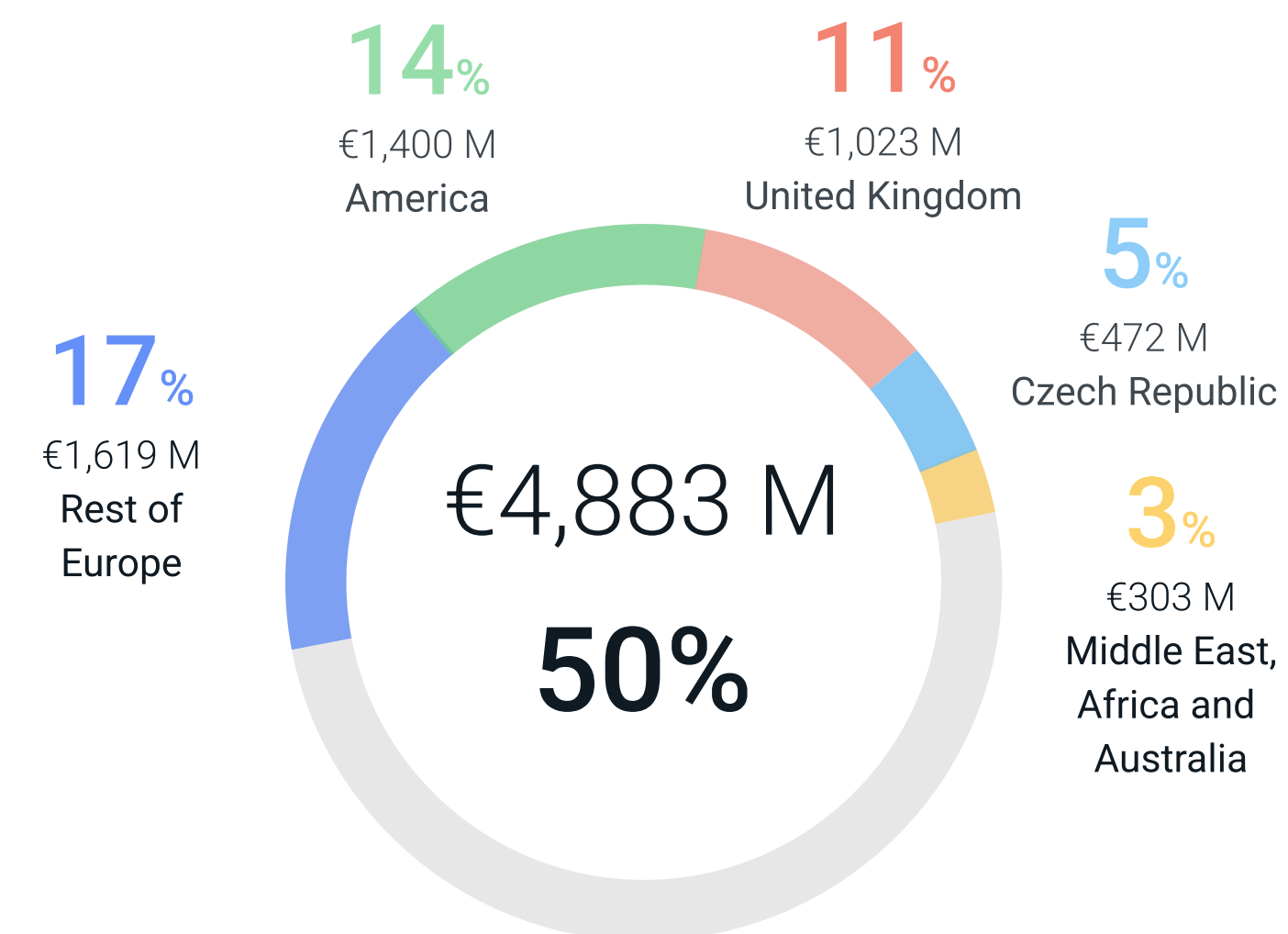
Environment

Water

Construction

Concessions

International revenue 2025



International portfolio

€30,462 M

59% of the total, as of 31 December 2025

Integrated offering

Advanced technology

Proprietary technology for waste collection and street cleaning

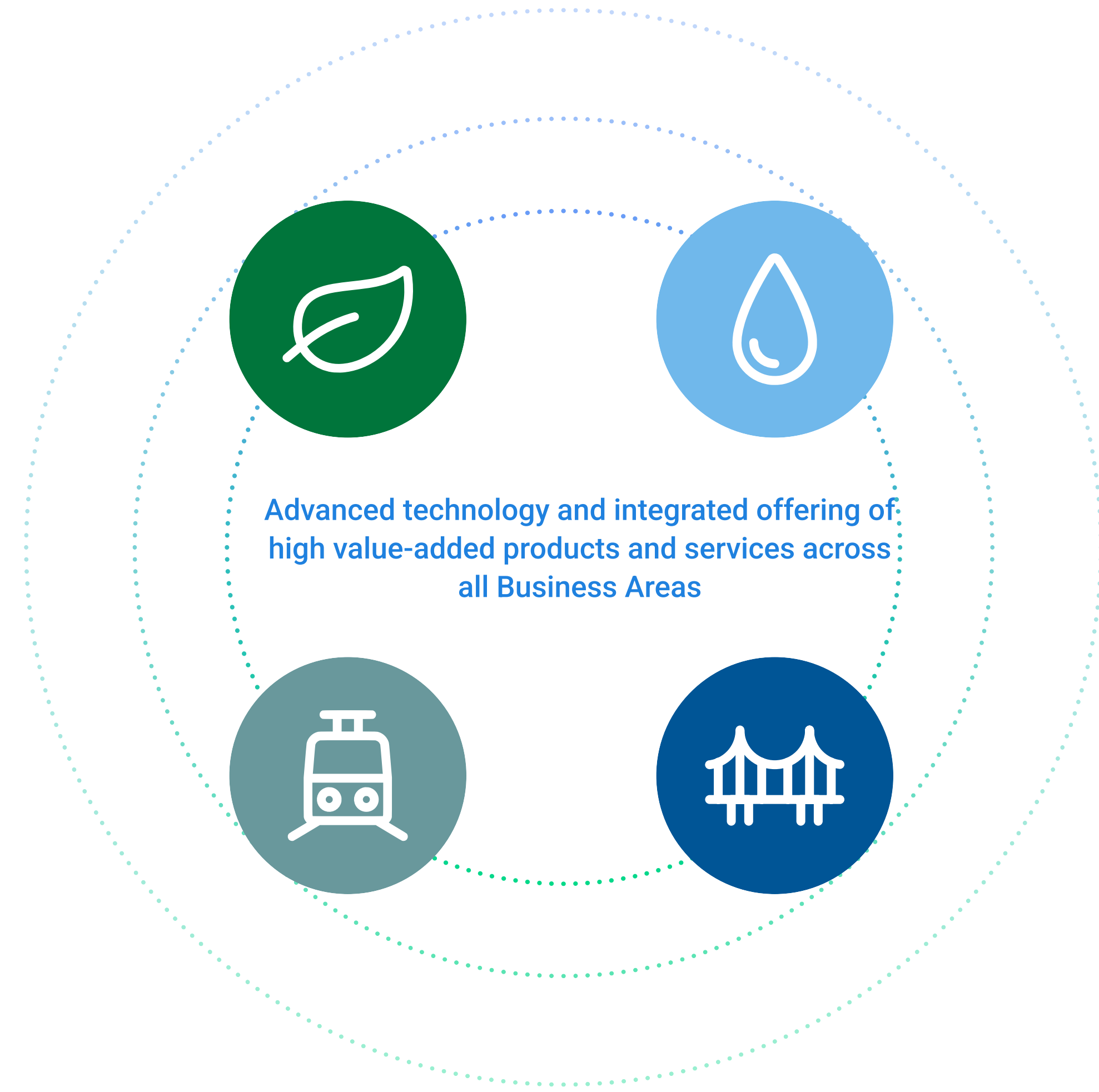
Leadership in recycling systems and energy recovery from waste

Experts in providing solutions across all phases of the comprehensive water cycle for all uses: residential, agricultural, and industrial, and for all needs of public and private entities and organizations

Specialists in technically complex bridges and ports

Innovative processes for high-speed lines, metro, and tunnels

Specialists in turnkey projects in the industrial sector



Creation of value

Our leadership allows us to capitalise on the demand for our activities.

Environment



Positive long-term outlook due to regulatory developments and environmental considerations. The EU Waste Framework Directive requires member states to recycle at least 60% of their municipal solid waste by 2030 and 65% by 2035 and reduce landfill to 10% by 2035.

Organic potential for international expansion, particularly in the United Kingdom, some Central European countries and growth of the energy recovery division in the United States.

Water



Aqualia's business model is distinguished by ensuring an essential service for life, social well-being, and industrial development, adapting to the particularities of each of the 19 countries in which it operates. Thanks to its solid experience and strategic leadership, the company adds value in changing environments through a global vision that translates into concrete and effective actions and solutions at the local level.

It will continue its development with a strict criterion of geographical selection, prioritising activities in regulated environments and contracts where its technical, engineering, and digitalisation capabilities provide competitive advantages.

It will continue to focus on markets with a stable presence and projects with secured financing.

Construction



Selective contracting, both national and international, through rigorous risk management that guarantees profitability and generation of cash flows.

To become a benchmark in the Infrastructure Concessions sector in all the countries in which it is already present and to expand its presence to new markets.

Concessions



Continuous search for growth with a strategic focus on the international arena, mainly in the United States, Europe (Czech Republic, United Kingdom, Portugal and Ireland) and Asia (Middle East), as main markets.

Value Creation

FCC Group

Environment

Water

Construction

Concessions

Experience
Over **125 years** of creating
value for citizens



Internationalization
Present in more than **25**
countries

Innovation and technological capability
Over **€14 M** in R&D and advancements to optimize
efficiency, tackle digital challenges, and promote
sustainable practical solutions



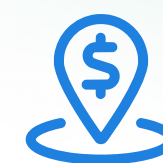
Professionalism
More than **72,000 professionals**
specialized in various fields

Environmental Care
Certified environmental management
systems according to UNE-EN ISO 14001 in
all business areas



Quality
Certified quality management
systems according to **UNE-EN ISO**
9001 in all business areas

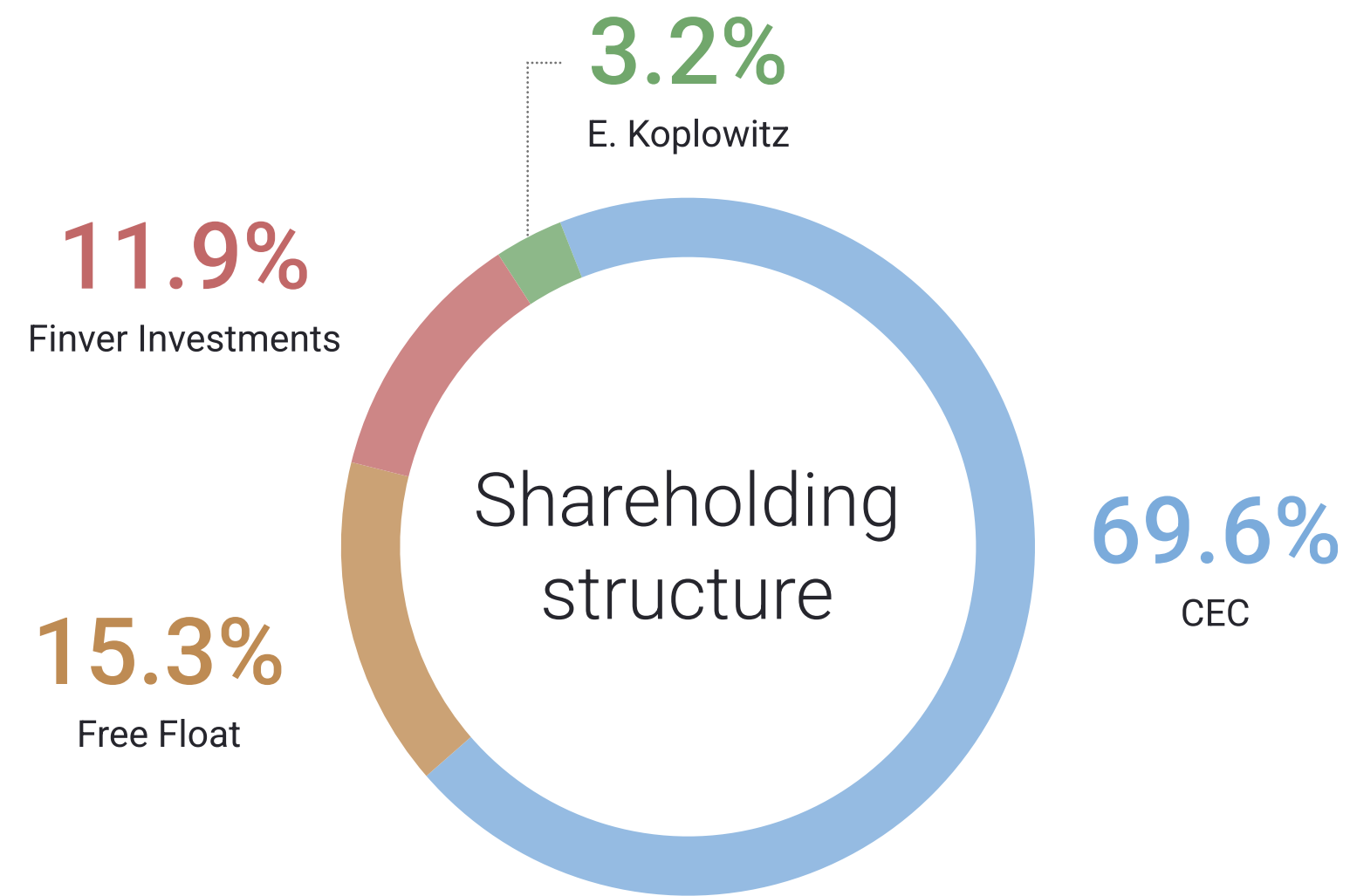
Local Development
Over **€5.8 M** allocated to sponsorships
and contributions to non-profit entities,
foundations, and sector associations



Safety and Health
Certified occupational risk management
systems according to **ISO 45001** in all
business areas



Corporate Governance Structure



Composition of the Council

11 members

8 Dominical Directors
2 Independent Members
1 Executive Director

Audit and
Remuneration Board
Commissions

Chaired by independent members
Majority of independent members

FCC Group

Environment

Water

Construction

Concessions

Management Team



FCC Group

Environment

Water

Construction

Concessions

Esther Alcocer Koplowitz

Chairwoman of FCC

Pablo Colio Abril

CEO

Business Areas

Íñigo Sanz Pérez

Environment

Santiago Lafuente Pérez-Lucas

Water

Pablo Colio Abril

Construction

Ramón Gómez Andrío

Concessions





Business Areas

Environment

Activities	16
Figures	17
Key figures	18
International Presence	19
Main References	20

Water

Activities	44
Figures	45
Key figures	46
International Presence	47
Main References	48

Construction

Activities	80
Figures	81
Key figures	82
International Presence	83
Main References	84

Concessions

Activities	123
Figures	124
Key figures	125
International Presence	126
International PPP Infrastructures	127
Main References	128



Environment

Municipal waste collection and street cleansing

Parks and ground maintenance

Waste treatment and recycling

Energy recovery from waste

Industrial waste management, soil and environmental liability remediation

Figures



FCC Group

Environment

Water

Construction

Concessions



Providing services to citizens since **1911**



Among the top **10** in the world



Serving over **83,5 million** citizens



Over **880** waste treatment, recycling, and disposal centres



Operating in over **5,900** municipalities



Managing nearly **27 million tonnes** of waste per year



24,000 units of the most advanced fleet in the world



Nearly **4,700** sustainable vehicles (CNG, electric, and Bi Power)



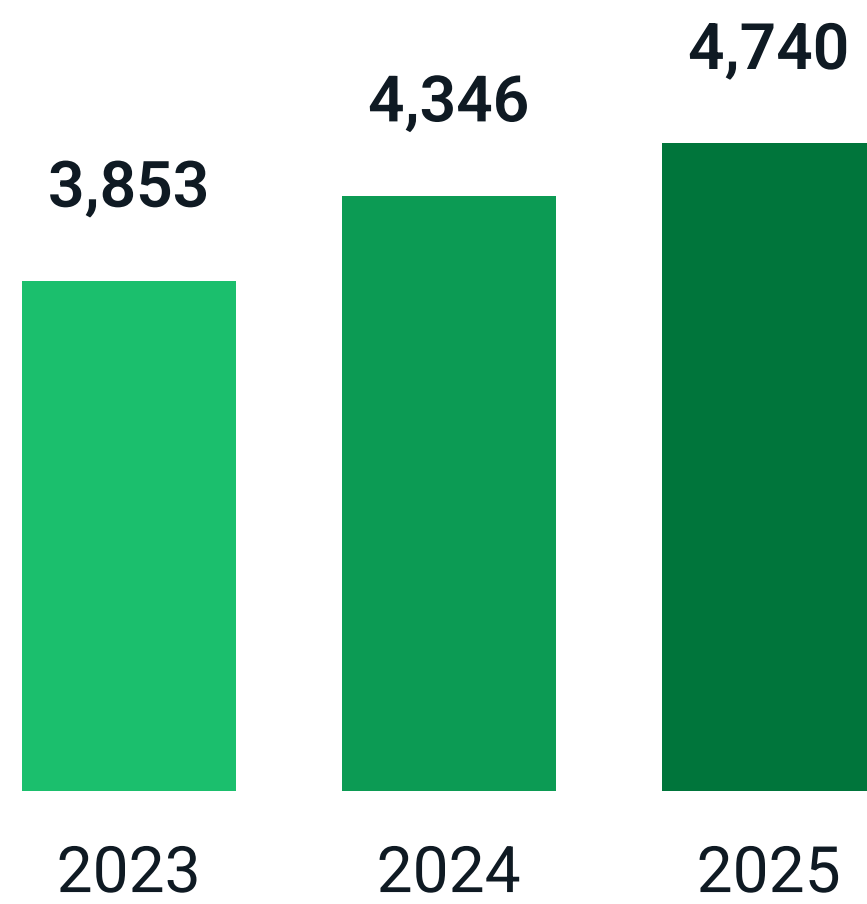
56,400 people



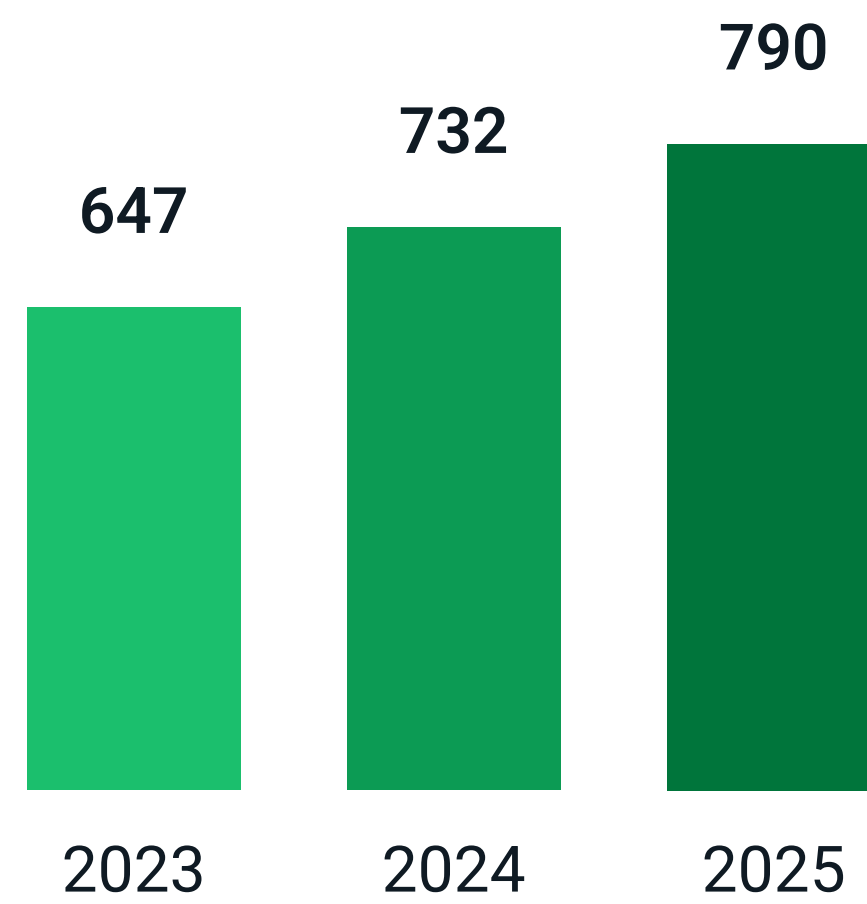
Labour of **underprivileged groups** in the workplace

Key figures 2025

Turnover In €M



EBITDA In €M



Portfolio

€15,624M

as of 31 December 2025

People

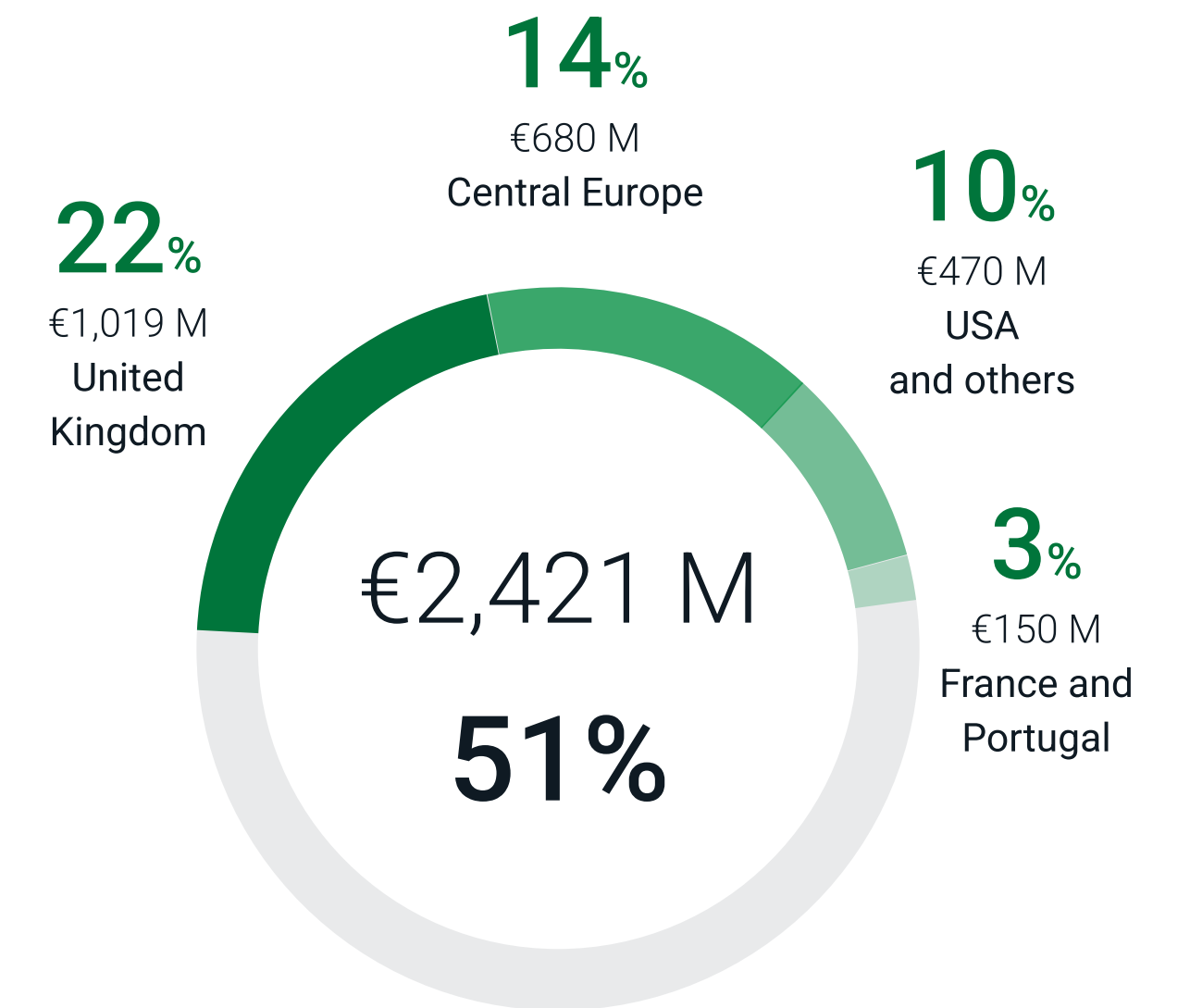
56,400



International presence



International revenues 2025



International portfolio

€6,399 M

41% of the total, as of 31 December 2025



Main references

FCC Group

Environment

Water

Construction

Concessions

Waste collection lot 1 (West Zone), Madrid, Spain

Since 1940.

Population: 1 million inhabitants.

Portfolio: €455 million. 6 years.

209 ECO or Zero Emissions vehicles, 950 people / 390,000 tonnes per year.



Waste collection and street cleansing, Granada, Spain

Population: 233,500 inhabitants.

Portfolio: €540 million. 15 years.

370 ECO and Zero per Emissions vehicles and machines. 850 people.

120,000 tonnes year / 600 km of roads.



Waste collection and street cleansing and drainage, L'Hospitalet de Llobregat, Barcelona, Spain

Since 1960.

Population: 260,000 inhabitants.

Portfolio: €400 million. 10 years.

136 ECO and Zero Emissions vehicles and machines. 500 people / 88,500 tonnes per year / 230 km of road surface / 232.94 km of network.



Waste collection and street cleansing, Oviedo, Asturias, Spain

Since 1967.

Population: 220,000 inhabitants.

Portfolio: €245 million. 10 years.

150 vehicles and machines, +90% eco-friendly and Zero-Emission. 400 staff / 70,000 tonnes per year / Over 1 million m² of street surface.



Los Cantiles Organic Waste Treatment Plant, Valdemingómez, Madrid, Spain

Design, construction, commissioning and operation. Contract awarded in 2021.

Population: 3 million inhabitants.

Investment: €31 million

Portfolio: €48.5 million. Operation for 3 years + possible 2-year extension
OFMSW from the city of Madrid / 105,000 tonnes per year.



Valladolid Waste Treatment Centre, Spain

Renovation, enlargement and operation. Opened in 2002. Enlarged in October 2025.

Population: 521,000 inhabitants across the entire province.

Investment: €43 million.

Portfolio: €138 million. 11 years.

212,500 tonnes per year / New R&D Centre / Comprehensive use of biogas.



Main references

FCC Group

Environment

Water

Construction

Concessions

La Campiña Environmental Compound, Loeches, Spain

Recycling Environmental Compound.

Population: 730,000 inhabitants.

Portfolio: €130 million.

31 municipalities, 5 recycling lines / 254,000 tonnes per year /
-90,000 tonnes eq CO2 per year.



FCC Environnement, France

Europe Services Déchets: Waste collection. New contracts in Grand Orly Seine Bievre (€1,2M) and Evry Courcouronne (€1M) (2025).

Europe Services Voirie: Street cleansing. Renewal of Grand Paris Sud and new contract for Vitry-sur-Seine (2024).

Europe Services Propreté: Facility management. ENGIE Campus in La Défense (€2M) (2025).



Waste collection and street cleansing, Vila Nova de Famalicão, Portugal

Population: 133,000.

Portfolio: €36 million. 10 years.

43,000 tonnes per year.



Transport and treatment of municipal waste in Western Tyrol, Austria

Rail transport and energy recovery of municipal waste at the Zistersdorf plant for the Western Tyrol Waste Disposal Association.

Portfolio: €33 million. 5 years.



Various municipal services, Liberec, Czech Republic

Municipal waste management, selective collection and recycling of paper, plastic, glass, beverage cartons, metals, edible oils and fats.

Portfolio: €30 million. 4 years.



Waste collection, transport and disposal, Hlohovec, Slovakia

Waste collection, treatment and recycling.

Portfolio: €8.6 million. 7 years.



Waste Treatment Plant, Nowy Targ, Poland

Inauguration: November 2025

Investment 2018–2025: €19.3 million .12 municipalities, 150,000 inhabitants

Municipal solid waste: 70,000 tonnes per year

Recyclable waste: 50,000 tonnes per year

Organic waste: 42,000 tonnes per year



Energy recovery plant in Zistersdorf, Austria

150,000 tonnes per year with 14.5 MW net electrical power, with an annual energy export to the grid of 106,000 MWh, enough to supply more than 30,000 homes.



Management of household waste recycling centres, Cheshire East, United Kingdom

From September 2025. Management of all household waste recycling centres throughout the municipality.
7 years.



Waste disposal, Cheshire West and Chester, United Kingdom

Extension of the waste disposal contract.

Population: 357,699 inhabitants.

Portfolio: £34.49 million. 3 years.



Lostock energy recovery plant, United Kingdom

Development of a waste-to-energy recovery plant with a capacity of 600,000 tpa in partnership with Copenhagen Infrastructure Partners (CIP).

Investment: £408 million.

Start of operations: November 2026.



Edinburgh and Midlothian Zero Waste plant, United Kingdom

Recycling and energy recovery plant in Millerhill (Midlothian).
Operational period of 25 years. Management and treatment of 160,000 tonnes per year. Production capacity of 14.2 MW / Energy for 32,000 homes.



Waste collection from Orange County, Florida, USA

Since 2019. First residential waste collection contract in the US.
Renewed in 2025.

Population: 77,000 households.

Investment: \$32 million.

Portfolio: \$170 million. 7 years.

75 vehicles. 100 employees.



Waste collection in Saint Paul, Minnesota, USA

Population: 300,000 residents.

Investment: \$25 million.

Portfolio: \$115 million. 7 years.

30 new CNG vehicles + electric inspection vehicles, gas station construction / 60 people.



Waste-to-energy plant in South Broward County, Florida, USA

Acquisition of the plant, strategic expansion of waste-to-energy activities.

Start of operations: 1991

Population: over 41,000 households.

Annual throughput: 750,000 tonnes per annum.

Electrical output: 66 MWe.



Main references

FCC Group

Environment

Water

Construction

Concessions

Waste-to-energy plant in Pinellas, Florida, USA

Operation and maintenance of the facility

Population: over 900,000

Portfolio: \$704.6 million

Annual throughput: 844,000 tonnes per year

Electrical output: 75 MWe.



Main references



FCC Group

Environment

Water

Construction

Concessions

Environmental Recycling Complex in Placer County, California, USA

Construction and operation of a 130-hectare Environmental Complex.

Investment: \$141 million.

Activity: Recycling, processing of construction and demolition waste, composting plant for organic, food and pruning waste, household waste recycling centre and disposal site.

Portfolio: \$1.5 billion. 10 + 5 + 5 years.

115 people / 650,000 tonnes per year.

Recycling plant, Houston, Texas, USA

Management of recyclables in the city of Houston.

Population: 2.3 million inhabitants.

Portfolio: \$250 million.

Design, financing, construction, and operation. Operational period 15+5 years / Up to 145,000 tonnes per year / **Best recycling facility of the year by NWRA USA 2020.**



Activities



FCC Group

Environment

Water

Construction

Concessions



Water

Concessions for water cycle management – GCIA

Management of Own and Public Services such as collection, treatment, purification, distribution, sanitation, and depuration, as well as water quality analysis.

Operation and maintenance – O&M

O&M contracts ensure a continuous supply of quality water, which requires the dedication, technology, professionalism, and experience necessary to achieve maximum excellence in the processes of the end-to-end water cycle.

Infrastructure concessions – BOT

Design, construction, financing, and long-term operation of infrastructures, treatment plants (purification, depuration, and desalination) or reuse facilities through BOT-type contracts and take or pay mechanisms.

Technology and networks – EPC (Engineering, Procurement and Construction)

Execution of design and construction projects, without involving the operation of the same once the construction phase is completed.

Figures



FCC Group

Environment

Water

Construction

Concessions



44,985,072
Population served



19 countries present



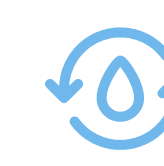
14,200 employees



934 WWTPs



91,748 km
of managed
networks



253 WTPs



1,256 hm³/year
Potable water
produced



37 IDAMs



3,285 potable water
storage tanks



20 sports centres

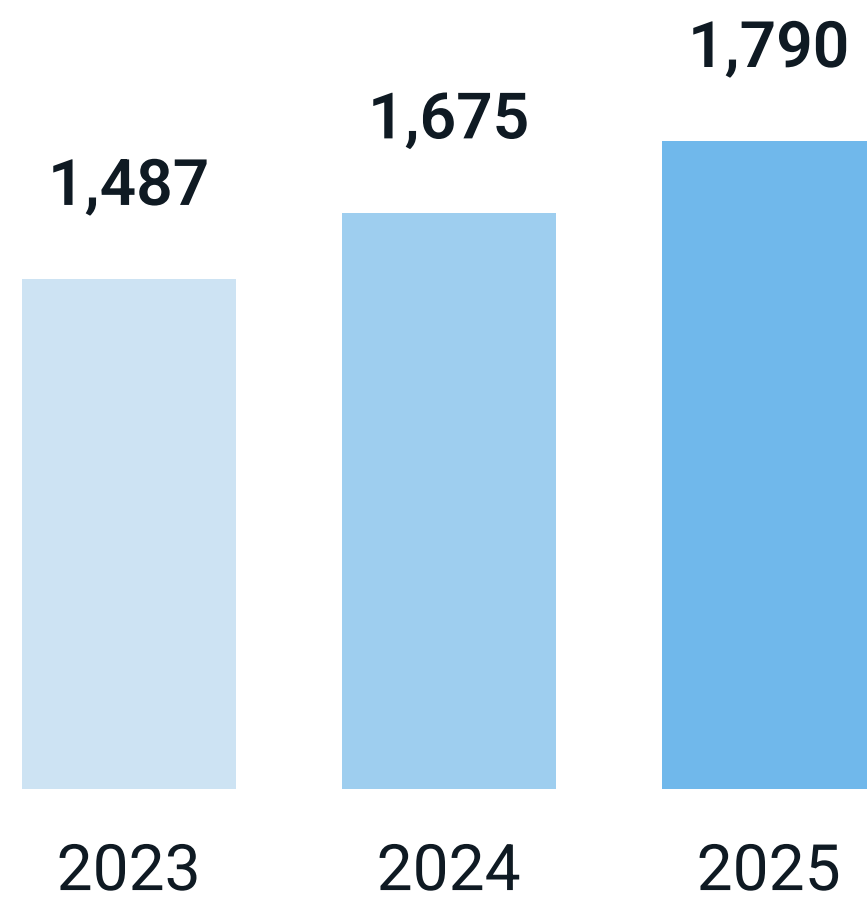


22 accredited central laboratories according to ISO-17025

Key figures 2025

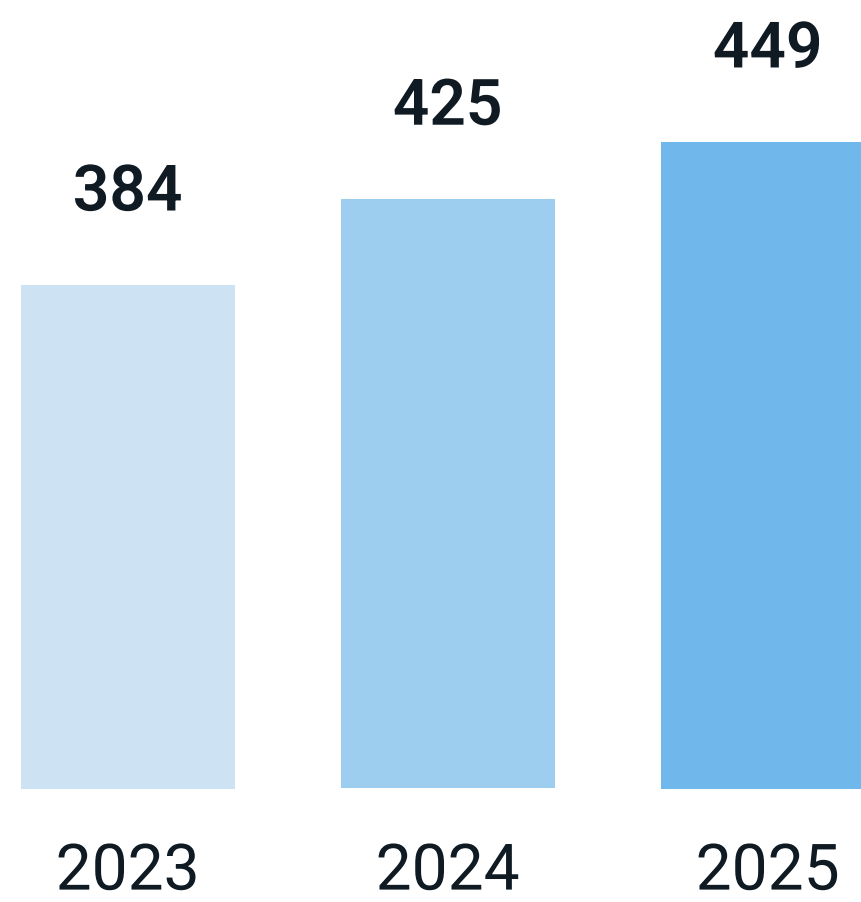
Revenue

In €M



EBITDA

In €M



Portfolio

€23.227 M

as of 31 December 2025

People

14,200



International presence



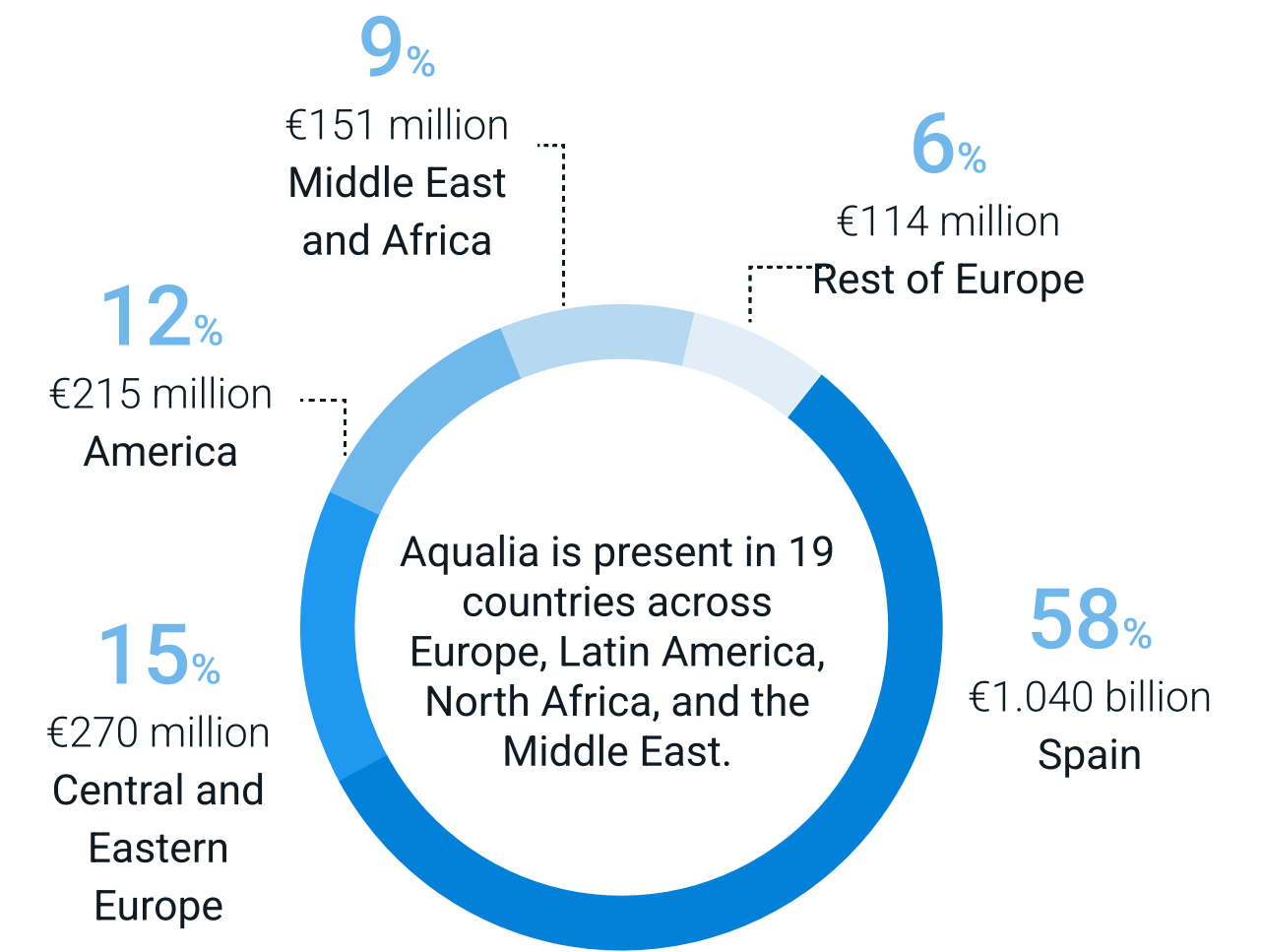
Europe

- Portugal
- Spain
- France
- Italy
- Czech Republic
- Romania

MENA

- Algeria
- Egypt
- Georgia
- Saudi Arabia
- Qatar
- Oman
- United Arab Emirates
- Japan

Revenue Breakdown 2025



Spain
€1,040 M
58% of total

International
€749 M
42% of total



Spain - Main references

FCC Group

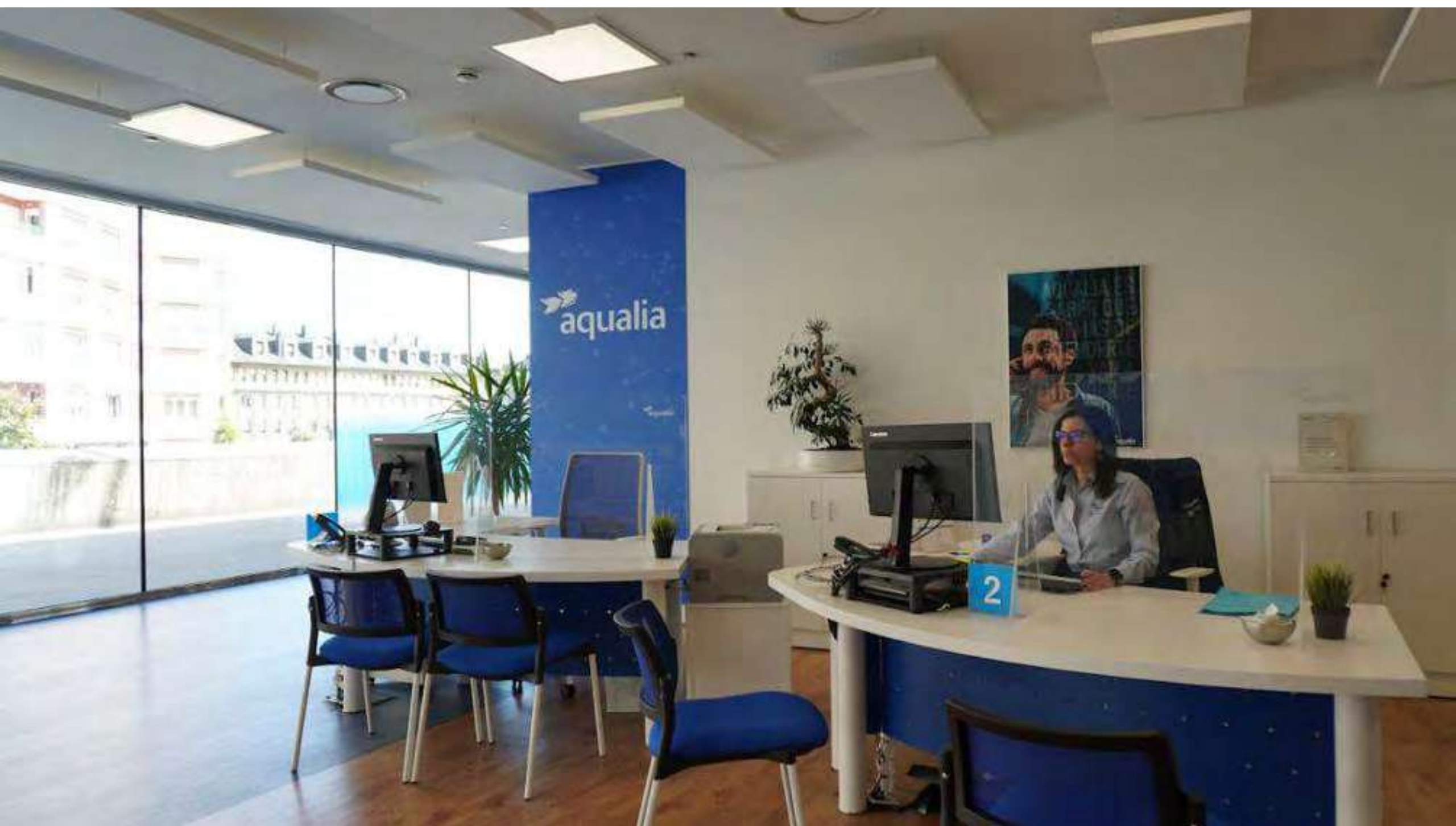
Environment

Water

Construction

Concessions

We lead the comprehensive management of water thanks to a specialized workforce, advanced technological development, and R&D projects that enable us to implement smart solutions to optimize each stage of the cycle. We provide services in 1,170 municipalities.



Spain - Main references

Desalination plant Mar de Alborán in Cabo de Gata, Almería, Spain

The recovery of the Rambla Morales desalination plant, abandoned since 2011 by the Community of Irrigators of the same name, has involved a total investment of 99 million euros. This project has become a technological benchmark and a relief for the overexploitation of the aquifers in the Campo de Níjar. Since 2025, the desalination plant has been operational, using a frame that provides 5 hm³ of water to the irrigation fields in the area. In 2026, it is expected that the other frames will be operational, thus reaching a total capacity of 20 hm³.



Spain - Main references

Desalination Plants in Ibiza, Balearic Islands, Spain

Client: Balearic Water Agency (ABAQUA).

Population: 150,000 inhabitants. Management of the 3 desalination plants on the island of Ibiza (Ibiza, Santa Eulalia, and San Antonio), with a production capacity of 45,000 m³/day supplying 10 million m³ of water per year. Additionally includes the high interconnection system of the island of Ibiza, which links the three desalination plants with an extensive system of pipelines, reservoirs, and pumping stations.



Spain - Main references

Lleida Wastewater Treatment Plant, Spain

Management since 1996.

Population: 144,878 inhabitants.

It is the most important wastewater treatment plant in Catalonia and the first facility in Spain to calculate and verify its Carbon Footprint 0 with AENOR, in the Integral Cycle of Lleida. It has a strong track record of high efficiency in pollutant removal, reducing energy costs, and developing innovative initiatives towards a circular, sustainable, and decarbonised economy.

FCC Group

Environment

Water

Construction

Concessions





Spain - Main references

FCC Group

Environment

Water

Construction

Concessions

Integrated Water Management in Oviedo, Spain

Management since 1996.

Client: City Council of Oviedo.

Population: 220,000 inhabitants.

The only municipality in Asturias that has potable water treatment with ozone to generate 1,500 l/s.

Spain - Main references

Integrated Water Management in Salamanca, Spain

Management since 1997.

Client: City Council of Salamanca.

Population: 144,000 inhabitants.

Pioneers in Spain in the application of R&D+i for the removal of nutrients in treated wastewater.



Spain - Main references

Integrated Water Management in Vigo, Pontevedra, Spain

Management since 1990.

Client: Vigo City Council.

Population: 294,000 inhabitants.

The largest hydraulic infrastructure in Galicia.



Spain - Main references



Integrated Water Management in Almería, Spain

Management since 1993.

Client: Almería City Council.

Population: 201,775 inhabitants.

Leading water service in Spain, home to several R&D projects of the company.

Spain - Main references

Water Supply and Sewerage in Algeciras, Cádiz, Spain

Management since 1995.

Client: Algeciras City Council. Mixed company (Emalgesa), of which Aqualia holds 49% and the City Council 51%.

Population: 125,047 inhabitants.



Spain - Main references

Comprehensive Water Management in Jerez de la Frontera, Cádiz, Spain

Management since 2013.

Client: Jerez de la Frontera City Council.

Population: 213,688 inhabitants.

Home to various R&D projects at the wastewater treatment plant.



Spain - Main references

Integrated Water Management in Alcalá de Henares, Madrid, Spain

Management since 2004.

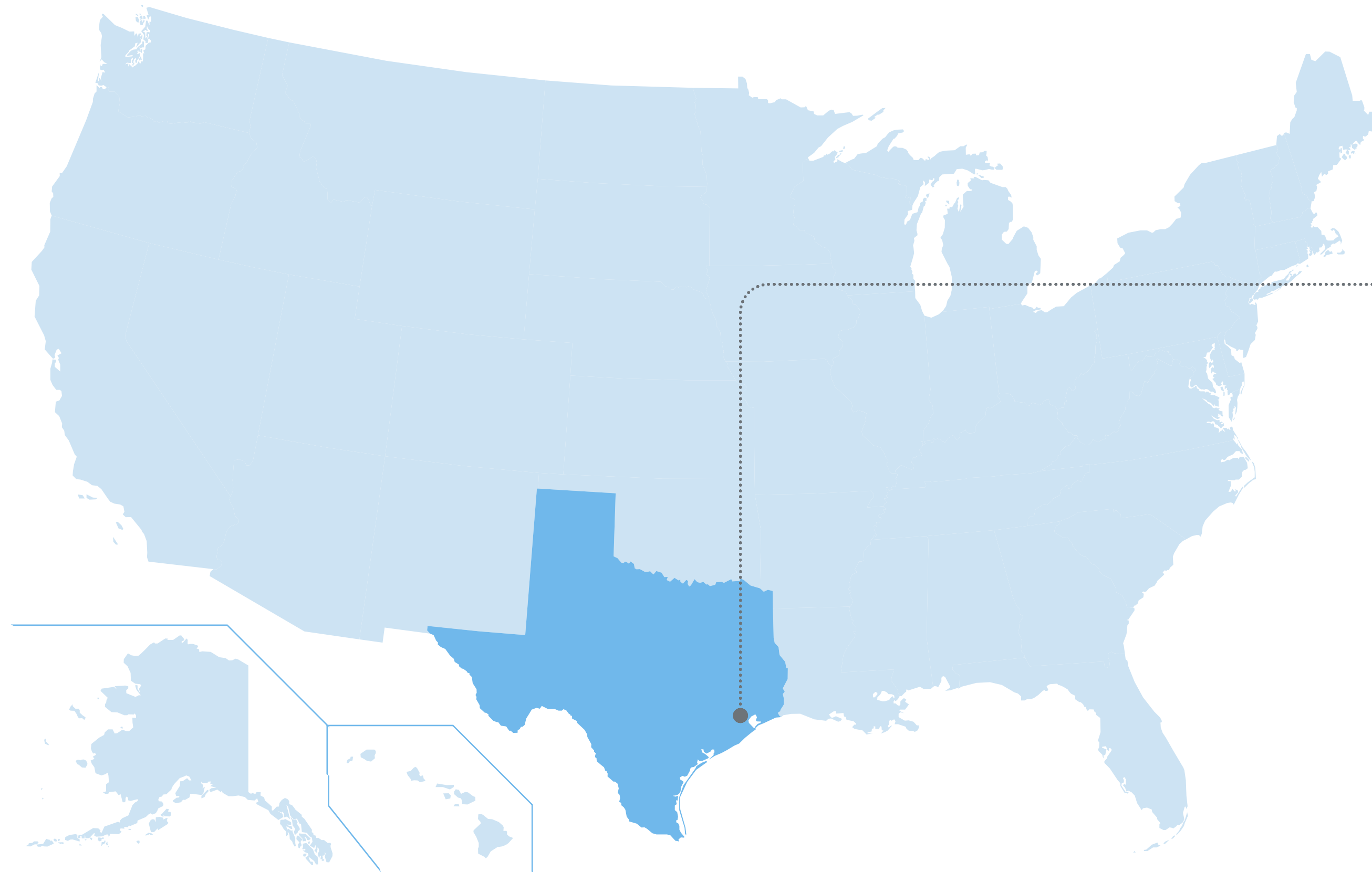
Client: Alcalá de Henares City Council.

Population: 194,000 inhabitants.

Mixed company (Aguas de Alcalá), where Aqualia collaborates with Canal de Isabel II.



United States - Main references



Integrated Water Management in Texas, USA.

Population: over 434,049 inhabitants.

The project includes the management of the complete water cycle through 160 service contracts with municipal utility districts (MUD) in the outskirts of Houston.



Latam - Main references

FCC Group

Environment

Water

Construction

Concessions

Querétaro Aqueduct, Mexico

Management since 2011.

Project Type: BOT - Build, Operate and Transfer (20 years).

Client: State Water Commission of Querétaro (CEA).

Population: 900,000 inhabitants.

The service includes collection, pumping, treatment, gravity conveyance, distribution, and storage of water. A total of 128 km of pipelines, reservoir, tunnel (4.8 km), pumping stations, reservoirs, and treatment plant to generate 130,000 m³/day.

Latam - Main references

El Realito Aqueduct, Mexico

Management since 2011.

Project Type: BOT - Build, Operate and Transfer (25 years).

Client: State Water Commission of San Luis Potosí (CEA).

Population: 430,000 inhabitants.

Conveyance and treatment of water from the El Realito dam to San Luis Potosí. The project includes a total of 132 km of pipelines, pumping stations, reservoirs, and a treatment plant generating 86,400 m³/day.



Latam - Main references

Atlántico

- Candelaria
- Luruaco
- Repelón
- Manatí
- Santa Lucía
- Campo La Cruz
- Atlántico

Córdoba

- San Antero
- Purísima Concepción
- Lorica
- Chimá
- Cereté
- San Carlos
- Planeta Rica
- Momil
- Tuchín
- San Andrés de Sotavento
- Ciénaga de Oro
- Sahagún

Tolima

- Flandes

Guajira

- Maicao
- Albania
- Riohacha

Magdalena

- El Retén
- Aracataca
- Fundación

Norte de Santander

- Villa del Rosario (Cúcuta)

Santander

- Mesa de Ritoque (Bucaramanga)

Cundinamarca

- Aguas de la Sabana
- PTAR Salitre
- Bogotá - Aqualia Headquarters in Colombia



Integrated Water Management in Colombia

End-to-end Water Cycle Management since 2020 in 28 municipalities across 8 departments. Population: Over 1,240,686 inhabitants.

Latam - Main references

PTAR El Salitre, Colombia

Population: Over 3,000,000 inhabitants.

Capacity: 600,000 m³/day.

Expansion and improvement of the El Salitre Wastewater Treatment Plant in Bogotá.



Latam - Main references



Integrated Water Management in Chincha, Peru

Population: over 345,000 inhabitants.

Project type: includes the execution and operation of 21 km of collection networks, a pumping station, wastewater treatment plants, and 7.7 km of lines for the final disposal of treated water.

The new infrastructure will reduce diseases caused by untreated wastewater, improving public health and the quality of life for the inhabitants of the affected districts. The project will also enhance the circular economy in the area, as the reuse of treated water will provide a new source of water for agricultural and/or industrial use.



MENA - Main references



FCC Group

Environment

Water

Construction

Concessions

Mostaganem Desalination Plant, Algeria

Client: SONATRACH/AEC

Project Type: Design and Construction (Completed in 2012) and Operation and Maintenance through Public-Private Partnership.

Population: Over 1,200,000 inhabitants.

Capacity: 200,000 m³/day.

One of the largest desalination plants in Africa.

MENA - Main references

Desalination Plant in El Alamein, Egypt

Client: Ministry of Defence.

Project Type: Design and Construction (completed in 2019), and Operation and Maintenance (until 2027).

Population: 1,000,000 inhabitants.

Capacity: 150,000 m³/day.

First and only desalination plant executed by a single company, and also Spanish. One of the top 3 plants in the world in 2020 according to GWI and the best in Egypt.



MENA - Main references



New Wastewater Treatment Plant in Cairo, Egypt

Management since 2009.

Client: NUCA (Ministry of Housing).

Project Type: Financing, Design and Construction (completed in 2013), and Operation and Maintenance (18 years).

Population: 1,000,000 inhabitants.

Capacity: 250,000 m³/day.

First Public-Private Partnership project in Egypt.

MENA - Main references

Abu Rawas WWTP, Egypt

Client: CAPW (Ministry of Housing).

Project Type: Design and construction (ongoing), and Operation and Maintenance.

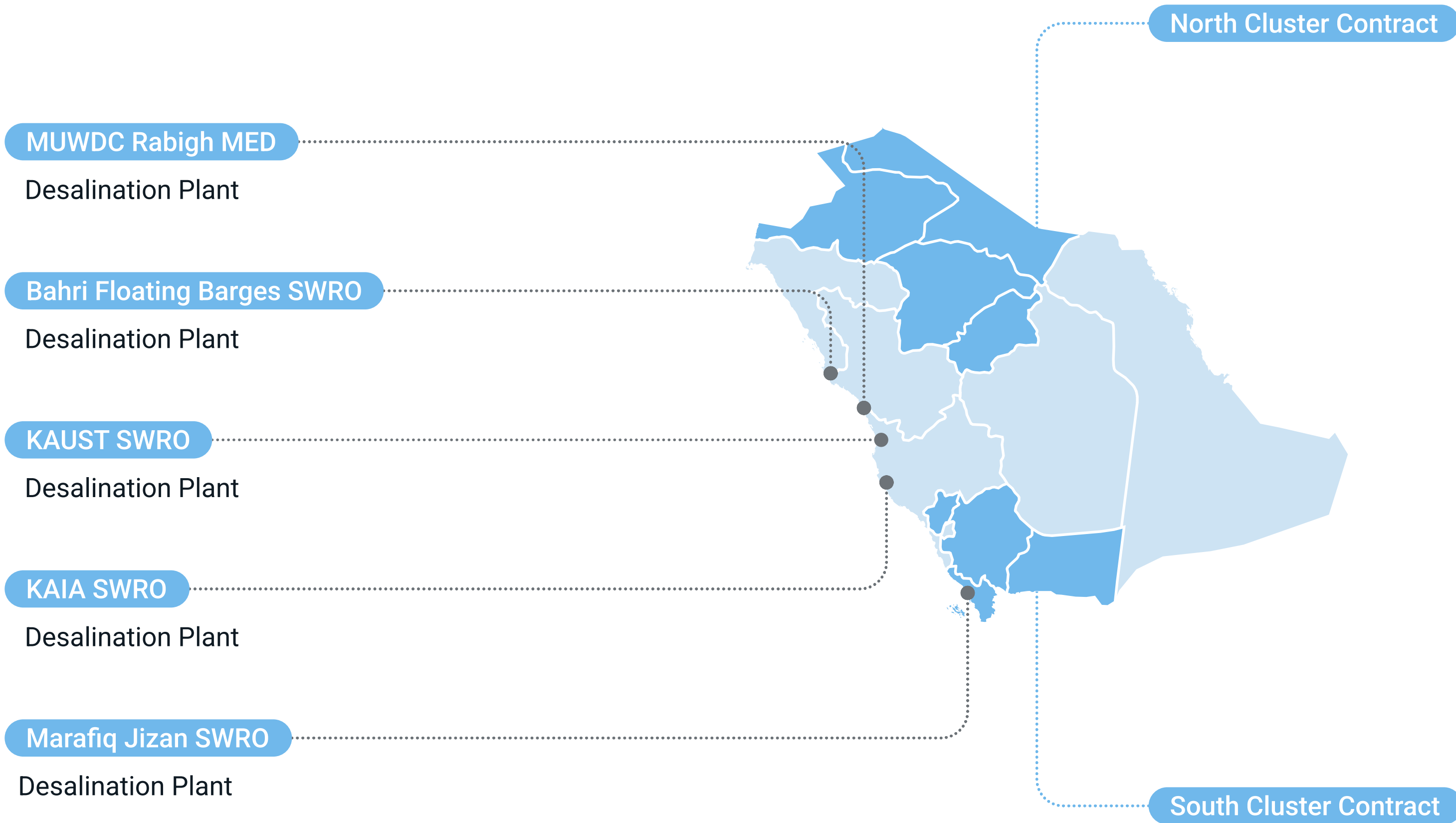
Population: 5,500,000 inhabitants.

Capacity: 1,600,000 m³/day.

Largest EPC (Engineering, Procurement and Construction) of a biological plant in Africa.



MENA - Main references



Integrated Water Management and O&M in Saudi Arabia

Management since 2020.

Project Type: Management, Operation, and Maintenance.

Population: over 8,000,000 inhabitants.

The project includes 631 municipalities spread across 8 provinces of the North and South Clusters of Arabia: Assir, Jizan, Al Baha, Najran, Qassim, Hail, Al Jouf, and Northern Borders.

MENA - Main references

Hydraulic Installations of Sohar Port, Oman

Client: MAJIS INDUSTRIAL SERVICES (Government of Oman).

Project type: O&M – Operation and Maintenance (20 years).

This contract includes numerous water intake and pumping infrastructures, desalination, supply, treatment, and sanitation.



MENA - Main references

Integrated Water Management in Al Ain, UAE

Management since 2012.

Project type: Water treatment and sanitation system.

The initial contract established a period of seven years, until 2019, valued at 76.3 million euros. Extension of 7 years.



MENA - Main references

Integrated Water Management in Abu Dhabi and some islands, UAE

Management since 2019.

Project type: CIA – Integrated Water Cycle (7 years) for Abu Dhabi and the adjacent islands of Al Reem, Al Maryah, and Al Saadiyat.

Capacity: up to 280,000 m³/day (over 100 billion litres per year).

The project manages 1,320 km of networks and 54 wastewater pumping stations.



MENA - Main references

EDAR of Al-Dhakhira, Qatar

Management since 2022.

Client: Public Works Authority (Government of Qatar).

Project type: Design, Construction, Operation and Maintenance.

Population: over 200,000 inhabitants.

Capacity: 56,200 m³/day.



Eurasia - Main references

Integrated Water Management in Georgia

Management since 2022.

Population: 1,437,833 inhabitants.

The project includes infrastructure in Tbilisi, Mtskheta, and Rustavi, including: the Zhinvali dam and reservoir, with a capacity of 520 hm³, 7 water treatment plants, 1 treatment facility, 58 pumping stations, 118 tanks, and 4,300 km of distribution networks and 1,700 km of sewage networks.



Europe - Main references

Integrated Water Management in Ostrava, Czech Republic

Population: 1,200,000 inhabitants.

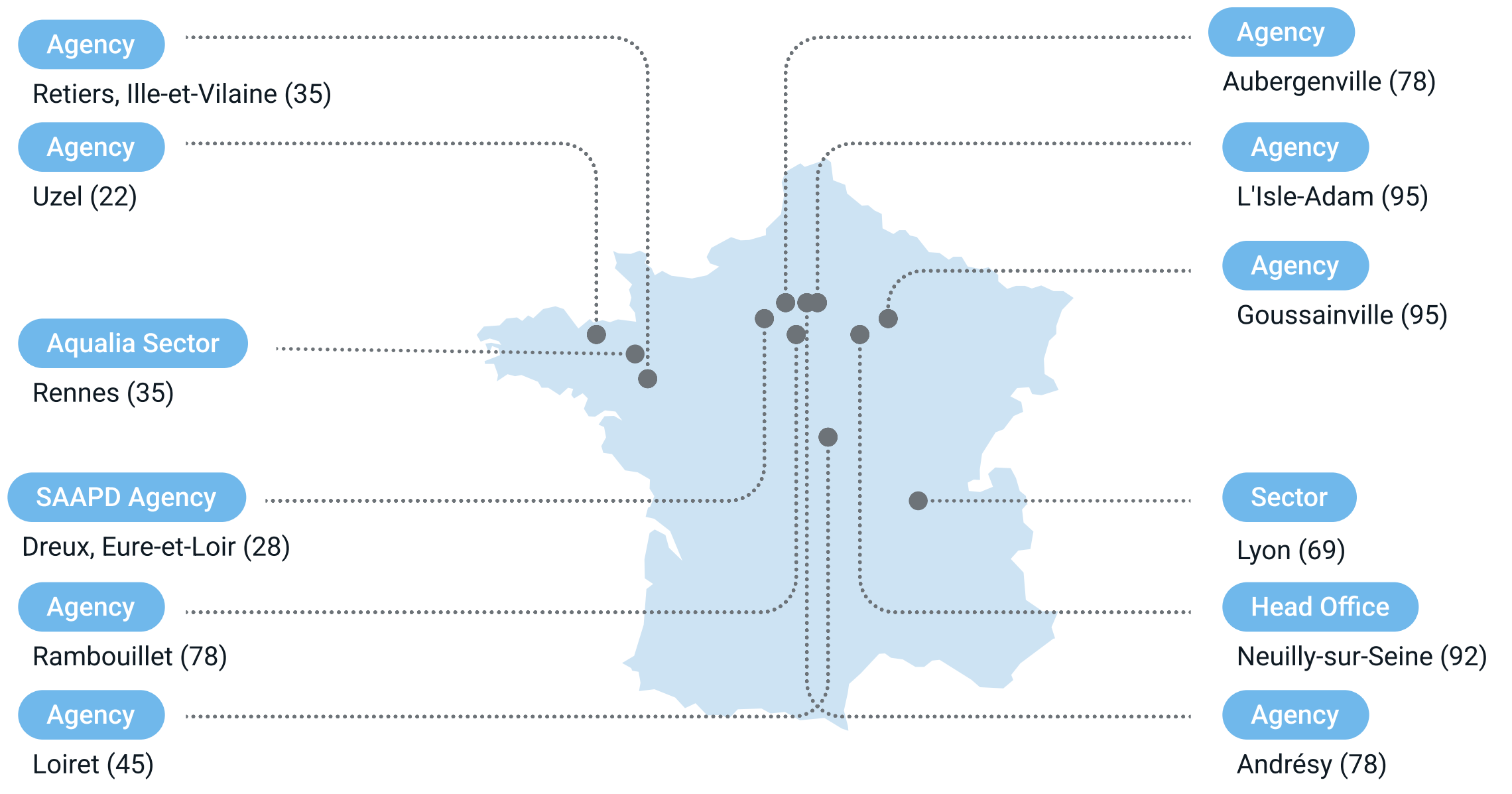
Capacity: 279,682 m³/day.

Main operator in Moravia and Silesia, managing the sewage network in 76 municipalities with a total of 1,844 km, a supply network of 5,061 km, 3 large water treatment plants, 68 treatment facilities, and 157 pumping stations. The project is one of the few cases of cross-border water supply, serving 100,000 inhabitants in Poland.





Europe - Main references



Integrated Water Management in Île de France and Brittany, France

Management since 2019.
Population: 970,000 inhabitants.
 Water supply management in 101 municipalities and management of sewage or treatment networks in another 100 municipalities.

Europe - Main references

Integrated Water Management in Caltanissetta, Italy

Management since 2006.

Population: 273,000 inhabitants.

End-to-end water cycle management in 22 municipalities of the province of Caltanissetta in Sicily. The project includes a water network of 993 km, a pipeline network of 180 km, a sewage network of 778 km, 21 treatment plants, 1 water purification plant, 21 wells, and 42 tanks.



Europe - Main references

Integrated Water Management in Elvas, Portugal

Management since 2009.

Population: 74,000 inhabitants.

Management of over 12,500 supply and wastewater contracts in the municipalities of Elvas, Vila Boim, Terrugem, Vila Fernando, Barbacena, São Vicente, and Santa Eulália.



Asia - Main references

Renovation and operation of Toyohashi water treatment plant, Japan

Start in 2025.

Population: 377,453 inhabitants.

Renovation of the Toyohashi water treatment plant and operation for 30 years of two water treatment facilities in Aichi Prefecture. In a consortium led by Infroneer Holdings Co., Ltd., a Japanese group specializing in construction and infrastructure management, the model will combine build-transfer (BT) with a concession and public-private partnership system for a sustainable and resilient service.



Activities



Construction

Civil works

- Railway infrastructures
- Roads
- Bridges
- Tunnels
- Maritime infrastructures
- Airport infrastructures
- Hydraulic infrastructures

Building

- Housing units and estates
- Non-residential building
- Rehabilitation

Industrial

- Electromechanical installations and maintenance
- Electrical networks and railway works
- Industrial construction
- Systems
- Infrastructure maintenance
- Prefabrication
- Corporate image

Figures



FCC Group

Environment

Water

Construction

Concessions



Over **125 years** of experience



We are **global and local**



Awarded the **largest urban transport infrastructure contracts** (Riyadh Metro, Toronto Rail Network)



Leader in urban transport infrastructure



Present in **24 countries**



One of the **top 25** construction companies in the world



More than 500 million people use our infrastructures

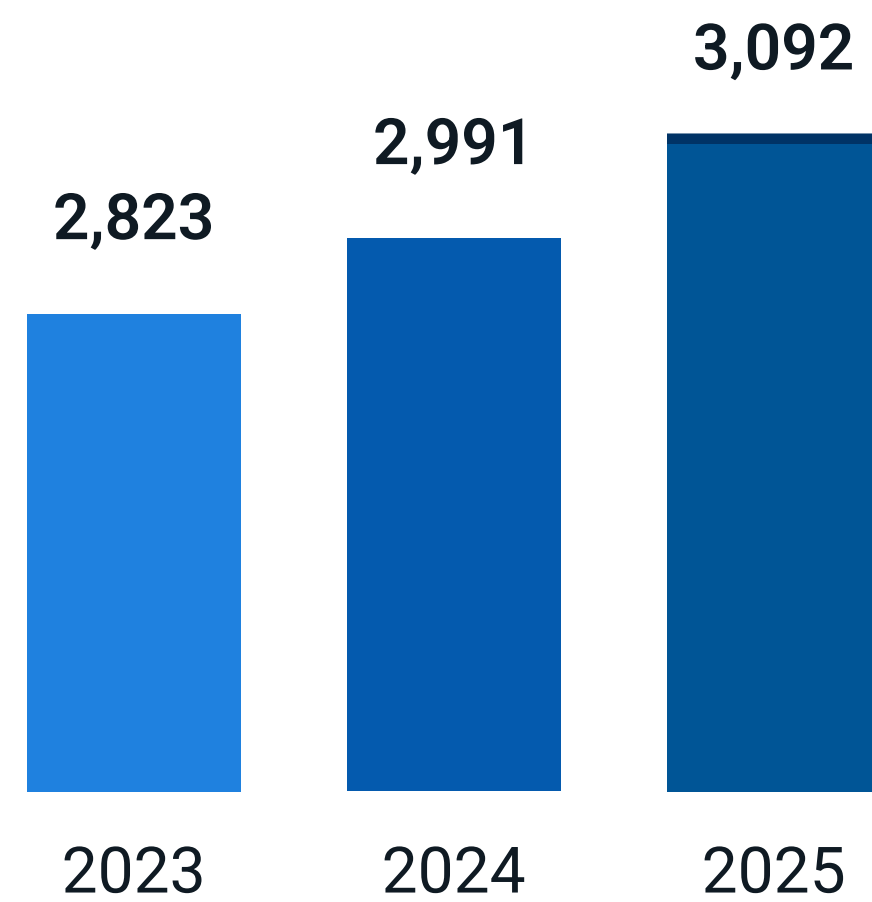


International benchmark in the selective execution of large civil works (tunnels, railways, metro...)

Key figures 2025

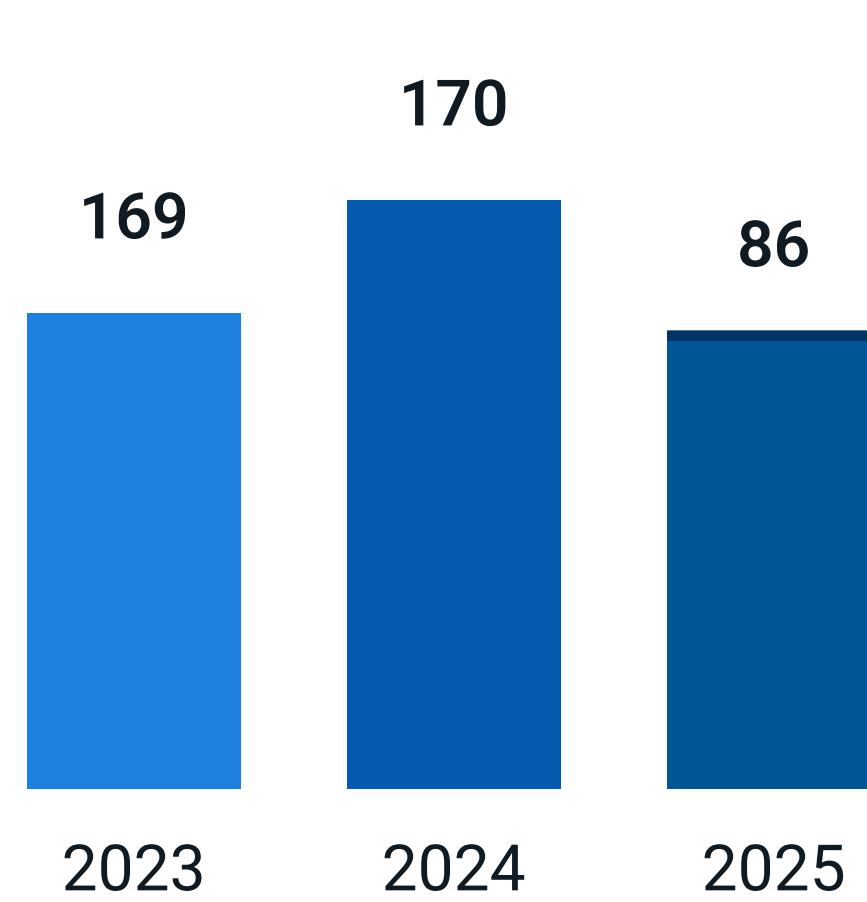
Revenue

In €M



EBITDA

In €M



Portfolio

€9,582 M

as of 31 December 2025

People

7,268



FCC Group

Environment

Water

Construction

Concessions



International presence



Europe

- Portugal
- Spain
- France
- Italy
- United Kingdom
- Ireland
- Belgium
- Netherlands
- Germany
- Norway
- Poland
- Romania

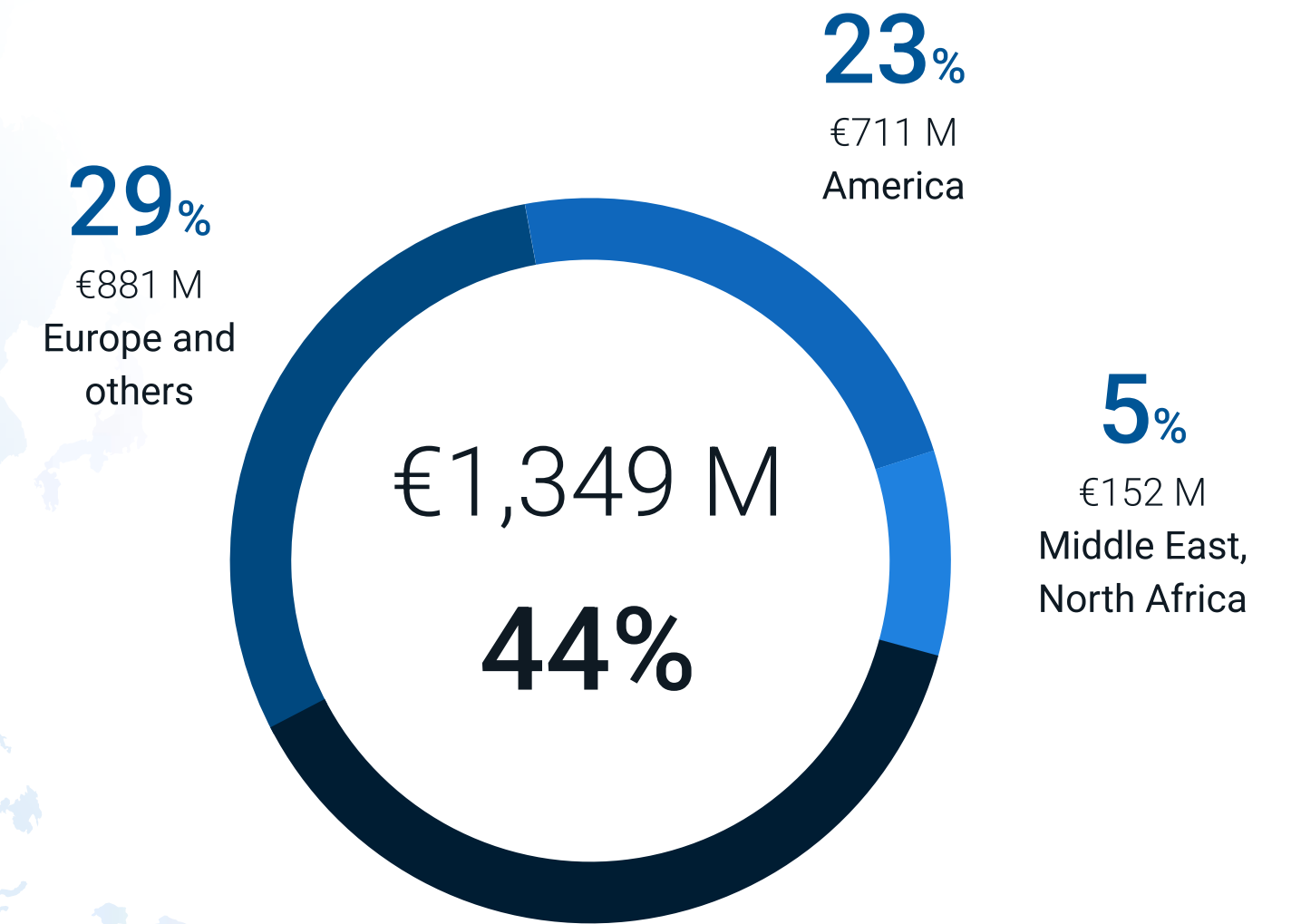
MENA

- Egypt
- Saudi Arabia
- Qatar

Oceania

- Australia

International revenues 2025



International portfolio

€6,846 M
71% of total,
as of 31 December 2025



Main references - In progress

Lines 2 and 4 of the Lima Metro, Peru



Main references - In progress

PTAR El Salitre, Colombia



Main references - In progress

Guillermo Gaviria Echeverri Tunnel, Colombia



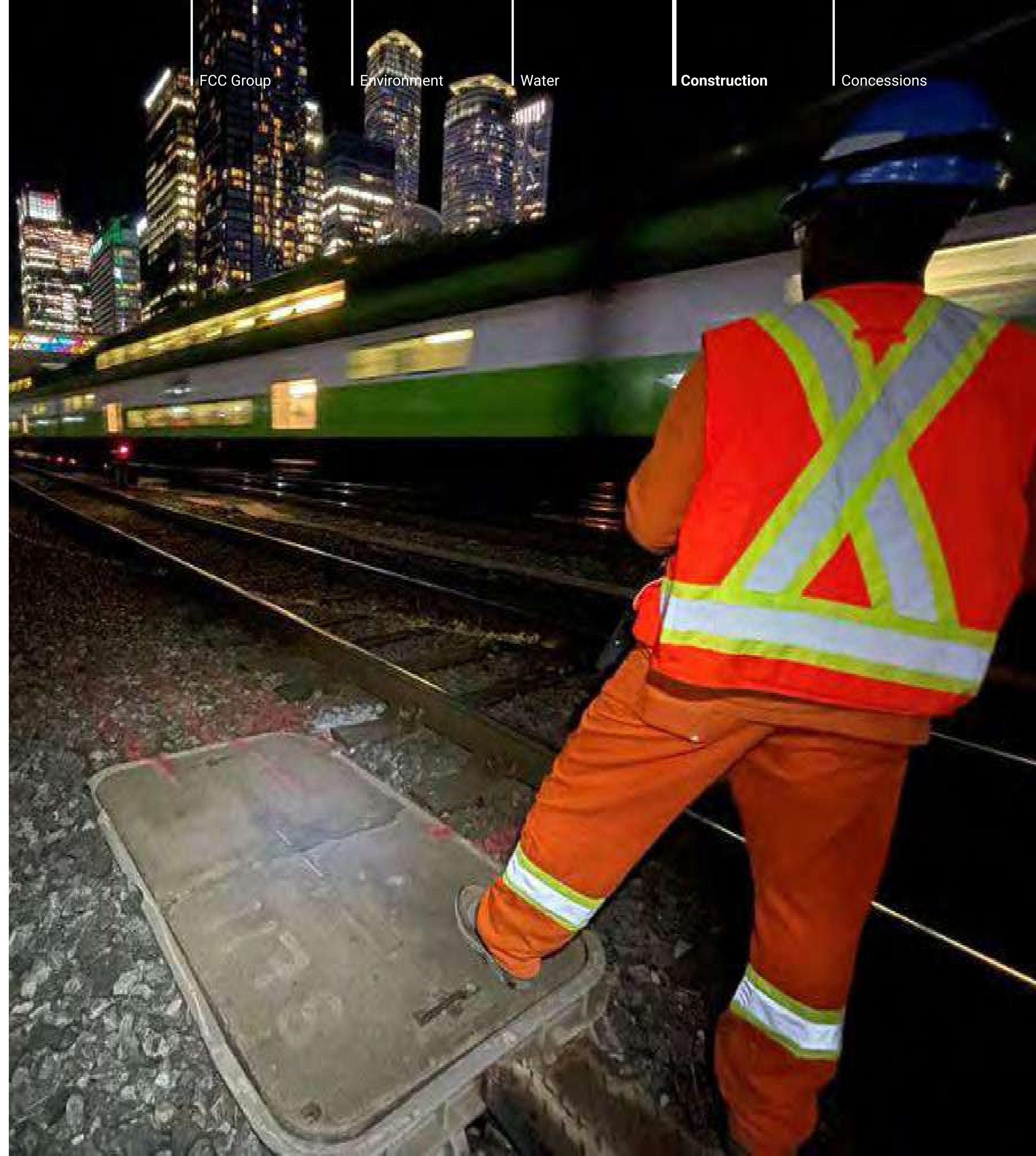
Main references - In progress

Scarborough Subway Extension, Canada



Main references - In progress

RER-3, Toronto Regional Rail Network, Canada



FCC Group

Environment

Water

Construction

Concessions

Main references - In progress



FCC Group

Environment

Water

Construction

Concessions

Ontario Line and Pape Tunnel, Canada

Main references - In progress

Replacement of 9 Bridges in Pennsylvania, United States



Main references - In progress



FCC Group

Environment

Water

Construction

Concessions

Qidiya Stadium, KSA

Main references - In progress

Barwon Heads Road, Australia



Main references - In progress

Saltillo-Nuevo Laredo Train, Mexico



Main references - In progress



FCC Group

Environment

Water

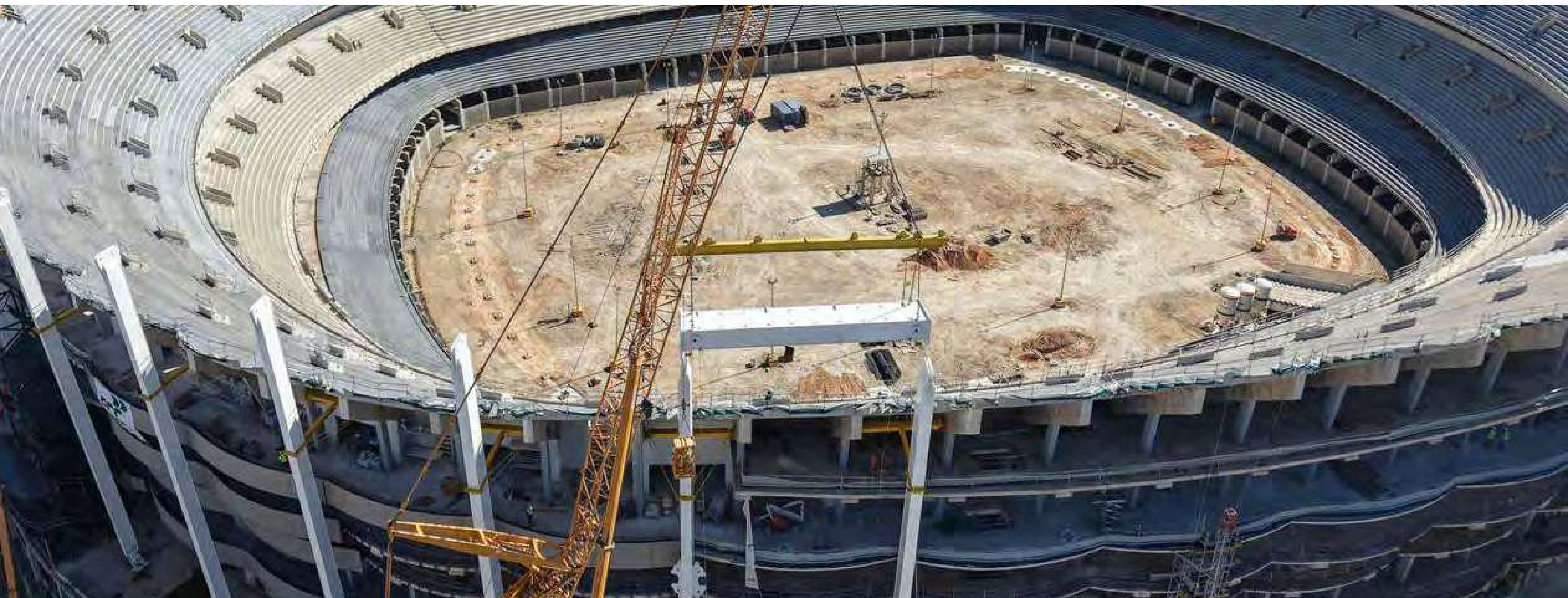
Construction

Concessions

Phase 2 of the Second Avenue Subway, New York City, USA

Main references - In progress

NOU Mestalla, Valencia, Spain



Main references - In progress



FCC Group

Environment

Water

Construction

Concessions

At Madrid Training Center, Spain

Main references - In progress

A5 Underground, Madrid, Spain



Main references - In progress



FCC Group

Environment

Water

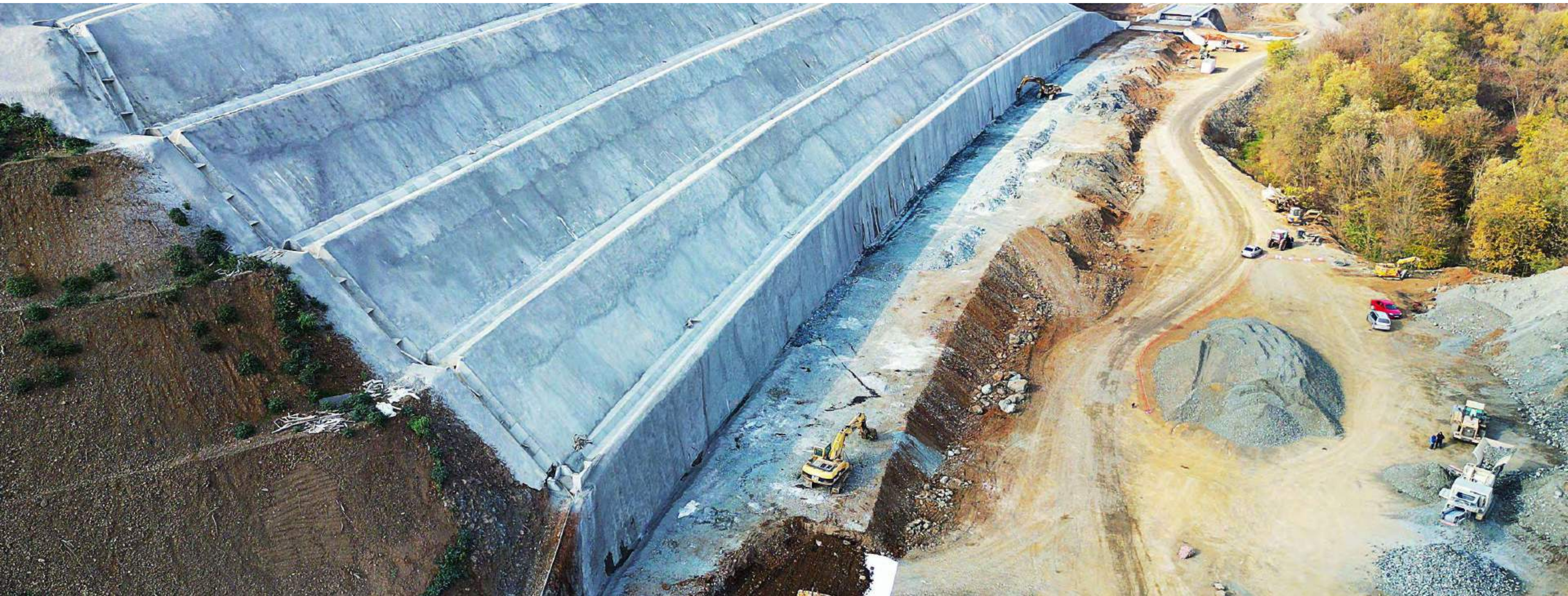
Construction

Concessions

Extension of Line 5, Madrid Metro, Spain

Main references - In progress

Railway sections, Romania



Main references - In progress

A9 Motorway Badhoevedorp - Holendrecht, Netherlands



Main references - In progress

Cancer Treatment Centre Pallas, Netherlands



Main references - In progress

Sotra Project, Norway



Main references - In progress

Porto Metro, Portugal



Main references - In progress

Railway sections, Portugal



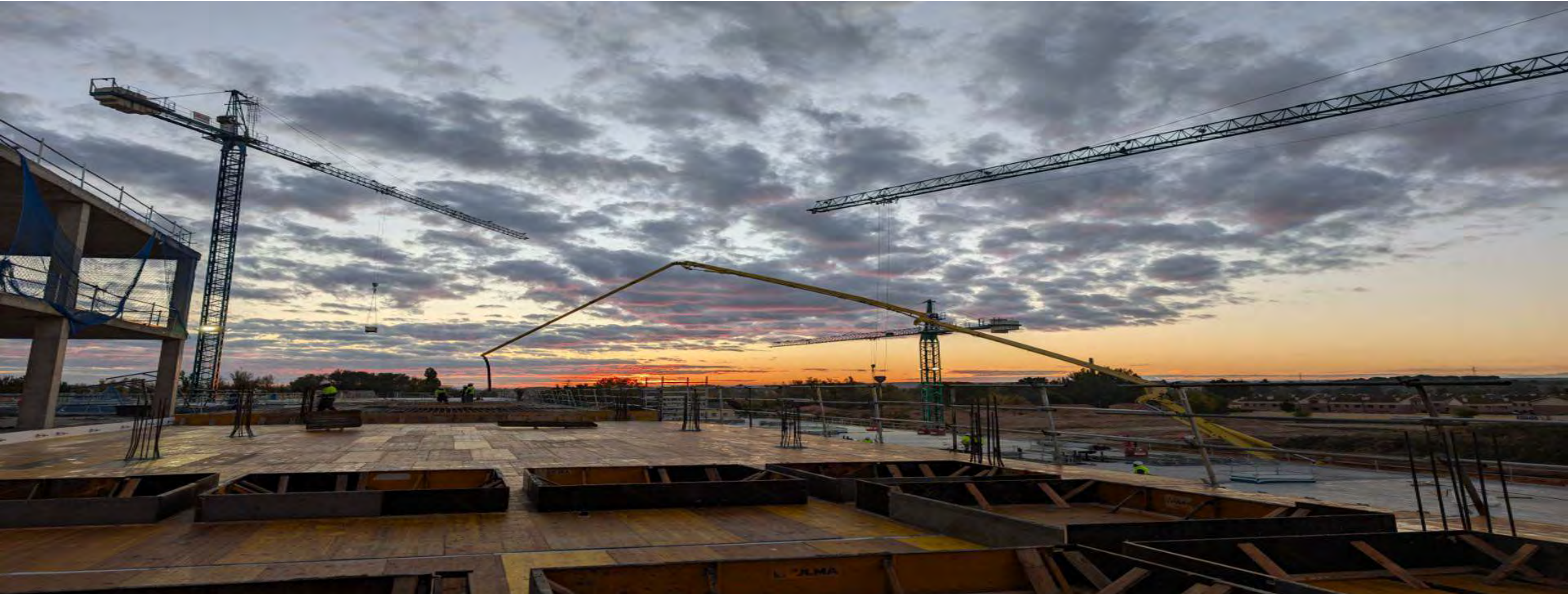
Main references - In progress

Railway sections. Mediterranean Corridor, Spain



Main references - In progress

Aranda del Duero Hospital, Spain



Main references - Completed

Section 2 Maya Train, Mexico



Main references - Completed

A-465 Sections 5-6, Wales, United Kingdom



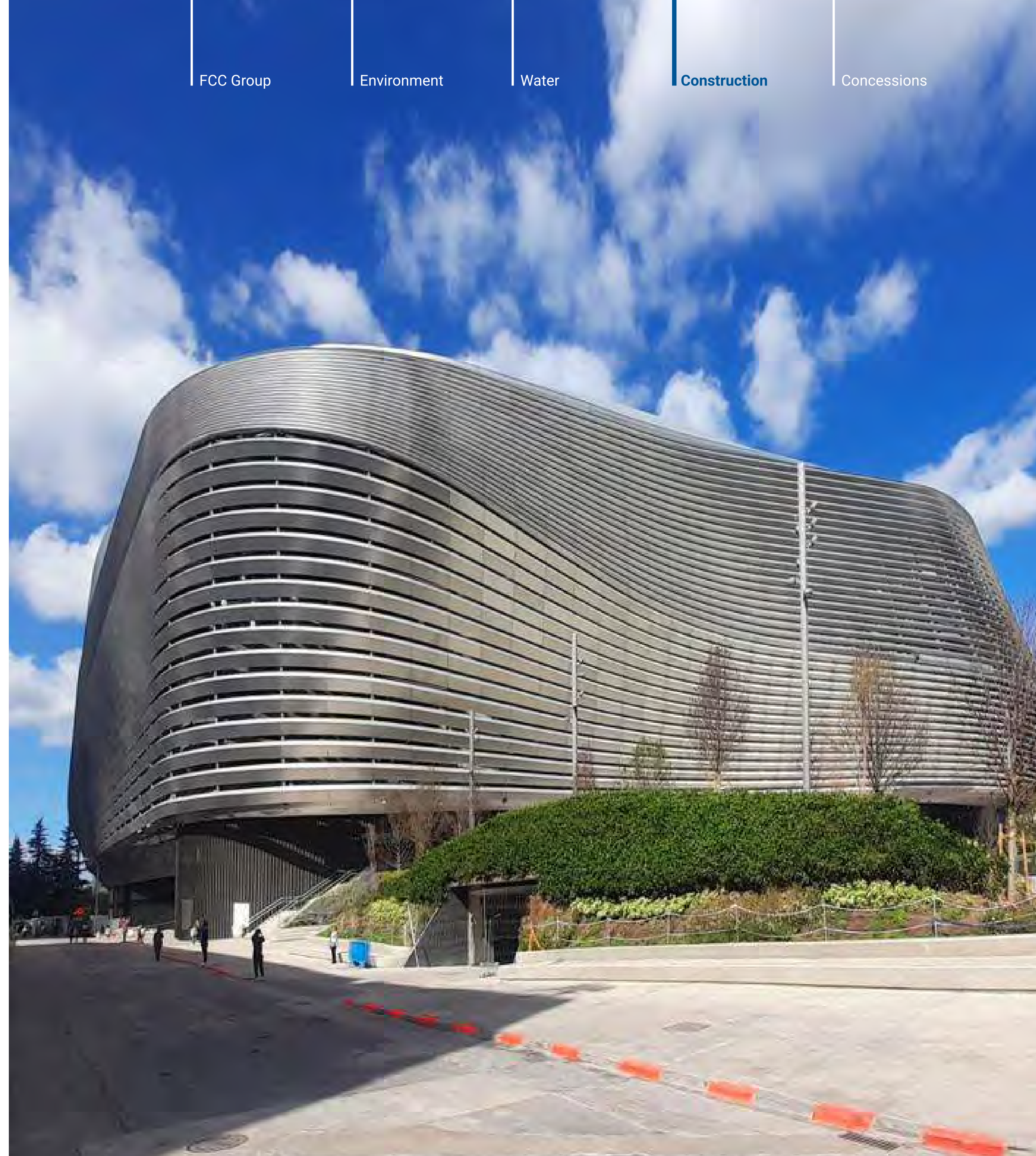
Main references - Completed

Industrial Bridge, Chile



Main references - Completed

Reform of Santiago Bernabéu Stadium, Spain





Main references - Completed

FCC Group

Environment

Water

Construction

Concessions

Riyadh Metro, Saudi Arabia

Main references - Completed

Red Line Metro Doha, Qatar



Main references - Completed

Glina Wastewater Treatment Plant, Romania





Main references - Completed

FCC Group

Environment

Water

Construction

Concessions

Haren Prison, Belgium

Main references - Completed

Line 5 Bucharest Metro, Romania



Main references - Completed

New runway Dublin Airport, Ireland



Main references - Completed

Grangegorman University, Ireland



Main references - Completed

Gerald Desmond Bridge, USA



Main references - Completed

El Alamein Desalination Plant, Egypt



Main references - Completed

Abbu Rawash Wastewater Treatment Plant, Egypt



Main references - Completed

Pizarro Photovoltaic Plant, Spain



Main references - Completed

Fuel Storage Plant, Peru





Activities



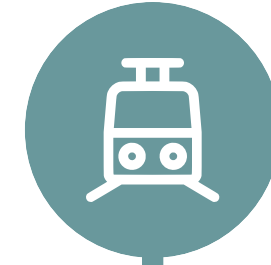
FCC Group

Environment

Water

Construction

Concessions



Concessions

- Road infrastructures
- Urban transport
- Social infrastructures*
Includes sanitary facilities and public buildings
- Other infrastructures



Figures



FCC Group

Environment

Water

Construction

Concessions



Leaders
in urban transport
concessions



Present in **5 countries**



More than 200 million people use
our concessions



Specialised in
sustainable mobility
infrastructure



We are part of the **FCC Group**, an international
leader in infrastructure

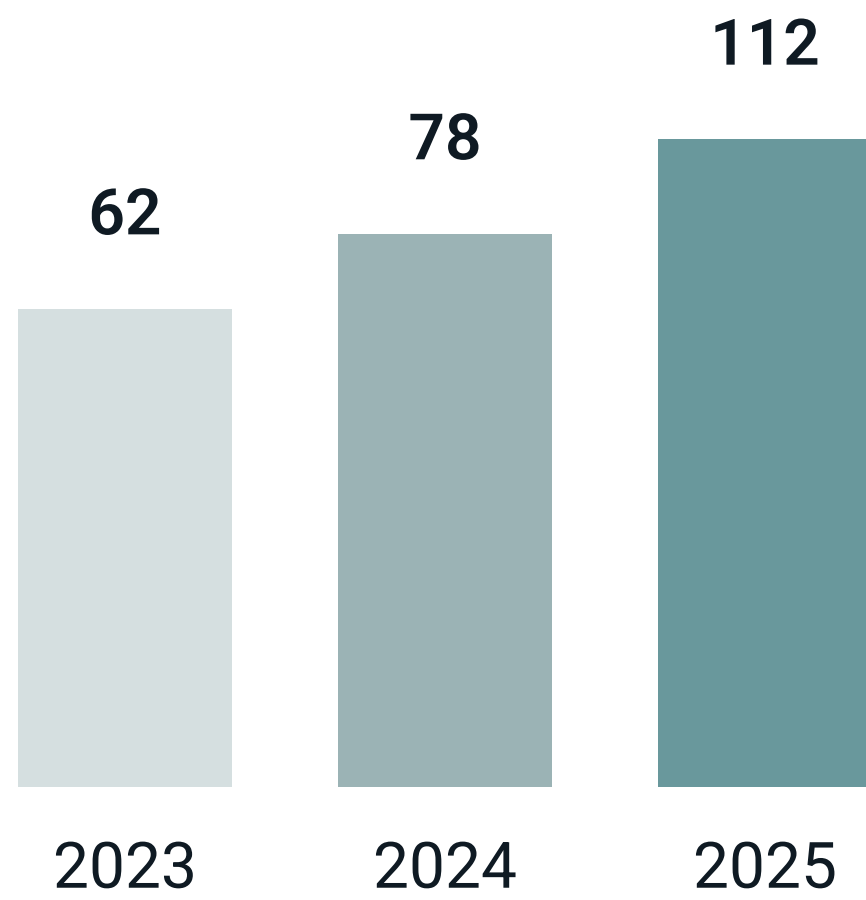


Present in **social**
infrastructure

Key figures 2025

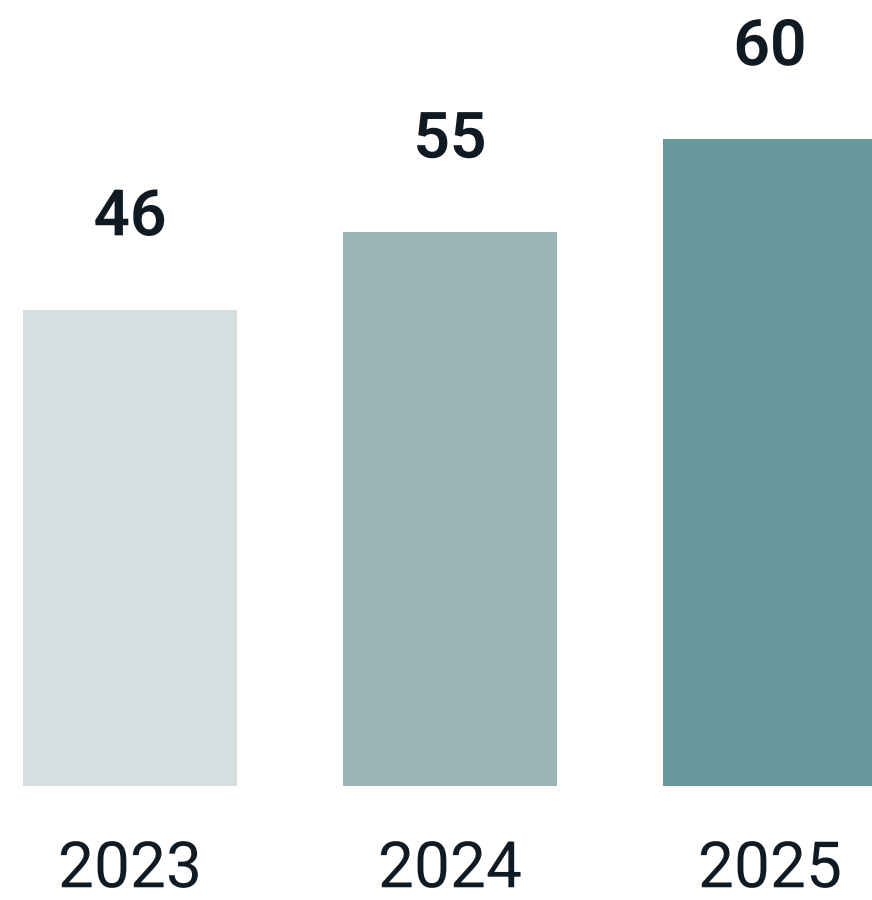
Revenue

In €M



EBITDA

In €M



Portfolio of Concessions

14 concession companies
3 operators

People

171

FCC Group

Environment

Water

Construction

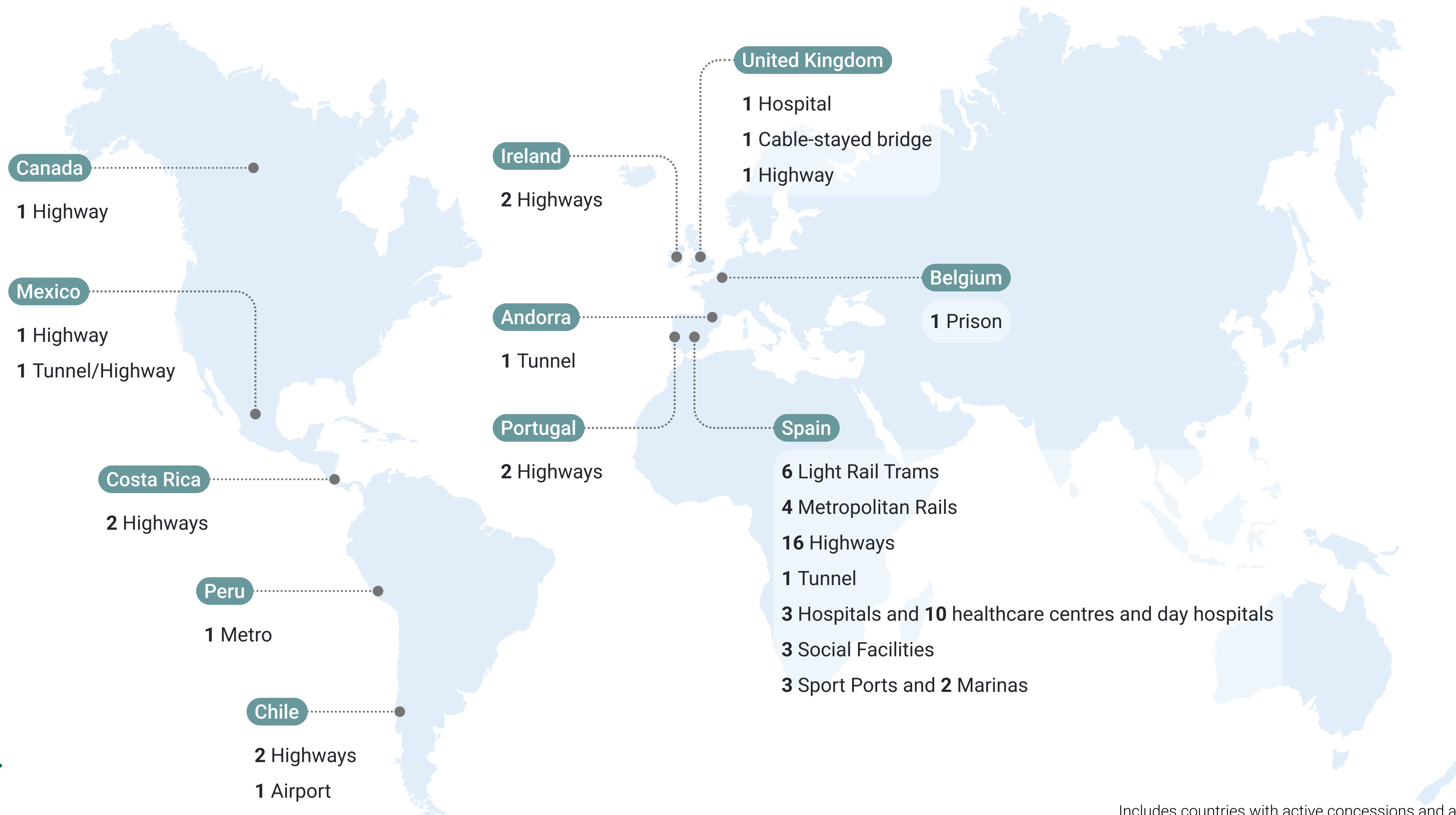
Concessions



International presence



Global Infrastructure PPP Projects



Includes countries with active concessions and a portfolio of historical projects.

Main references

FCC Group

Environment

Water

Construction

Concessions

A465, United Kingdom



Main references

FCC Group

Environment

Water

Construction

Concessions

Auconsa, Spain



Main references

FCC Group

Environment

Water

Construction

Concessions

Ibisan, Spain



Itinerary 8 Aragón, Spain



Main references

FCC Group

Environment

Water

Construction

Concessions

Line 2 and 4 Lima Metro, Peru



Main references

FCC Group

Environment

Water

Construction

Concessions

Murcia Tram, Spain



Main references

FCC Group

Environment

Water

Construction

Concessions



Parla Tram, Spain

Main references

FCC Group

Environment

Water

Construction

Concessions



Trambaix, Spain

Main references

FCC Group

Environment

Water

Construction

Concessions

Trambessos, Spain



Main references

FCC Group

Environment

Water

Construction

Concessions



Zaragoza Tram, Spain

Main references

FCC Group

Environment

Water

Construction

Concessions

Haren Prison, Belgium



Main references

FCC Group

Environment

Water

Construction

Concessions

World Trade Center, Spain



Main references

FCC Group

Environment

Water

Construction

Concessions

Marina Port Torredembarra, Spain



Web



Grupo FCC

Medio Ambiente

Agua

Construcción

Concesiones

FCC Group



fcc.es



Water



aqualia.com



Construction



fccco.com



fccindustrial.com



Concessions



fccconcesiones.com



Environment



fccenviro.com



fccma.com



fccambito.es



fcc-group.eu



fccenvironment.co.uk



fccenvironmental.com

Legal notice

- This document may contain forward-looking statements regarding intentions, expectations, or forecasts of the FCC Group or its management as of the date of its preparation, relating to various aspects such as the growth of different business lines, the results of the FCC Group, or other aspects concerning its activities and situation.
- These forward-looking statements or forecasts do not, by their nature, constitute guarantees of future performance, being subject to risks, uncertainties, and other relevant factors that could cause actual developments and results to differ materially from those expressed in these intentions, expectations, or forecasts.
- This document does not constitute an offer or invitation to acquire or subscribe for shares, in accordance with the provisions of Law 6/2023, of 17 March, on Securities Markets and Investment Services, Royal Decree-Law 5/2005, of 11 March, and/or Royal Decree 814/2023, of 8 November, and its implementing regulations. Furthermore, this document does not constitute an offer to purchase, sell, or exchange, nor a solicitation of an offer to purchase, sell, or exchange securities, nor a request for any vote or approval in any other jurisdiction.
- This document or any of its parts does not constitute a contractual document, nor may it be used to integrate or interpret any contract or any other type of commitment.
- The information presented in this statement should be considered by all individuals or entities that may need to make decisions or formulate or disseminate opinions regarding securities issued by the FCC Group. All are encouraged to consult the public documentation and information communicated or registered by the FCC Group with the National Securities Market Commission.
- This document contains financial information that has been audited and prepared in accordance with International Financial Reporting Standards (IFRS).